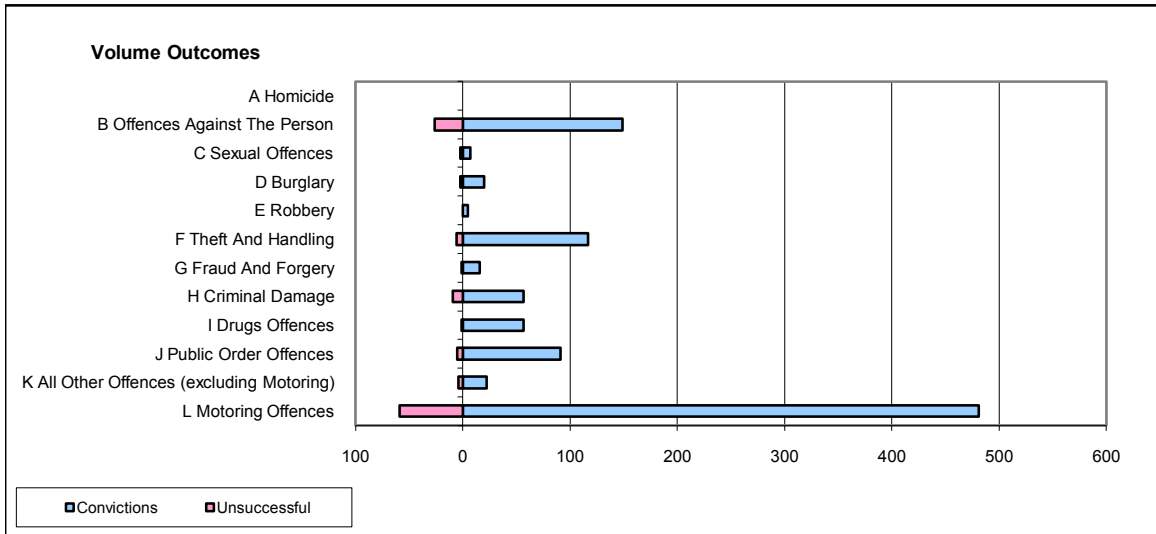
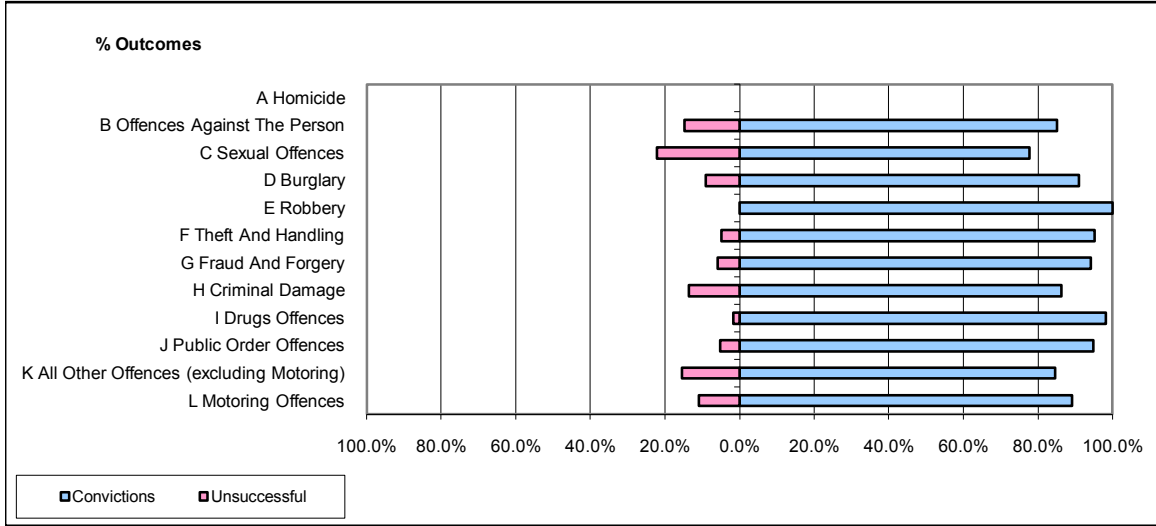


**CPS OUTCOMES BY PRINCIPAL OFFENCE CATEGORY**

**October 2008**

**P35-Suffolk**



	Convictions		Unsuccessful	
	Number of Defendants	%	Number of Defendants	%
<b>A Homicide</b>	0	0	0	0
<b>B Offences Against The Person</b>	149	85.1%	26	14.9%
<b>C Sexual Offences</b>	7	77.8%	2	22.2%
<b>D Burglary</b>	20	90.9%	2	9.1%
<b>E Robbery</b>	5	100.0%	0	0.0%
<b>F Theft And Handling</b>	117	95.1%	6	4.9%
<b>G Fraud And Forgery</b>	16	94.1%	1	5.9%
<b>H Criminal Damage</b>	57	86.4%	9	13.6%
<b>I Drugs Offences</b>	57	98.3%	1	1.7%
<b>J Public Order Offences</b>	91	94.8%	5	5.2%
<b>K All Other Offences (excluding Motoring)</b>	22	84.6%	4	15.4%
<b>L Motoring Offences</b>	481	89.1%	59	10.9%
<b>Admin Finalisations</b>	0	0.0%	23	100.0%
<b>TOTAL</b>	<b>1,022</b>	<b>88.1%</b>	<b>138</b>	<b>11.9%</b>