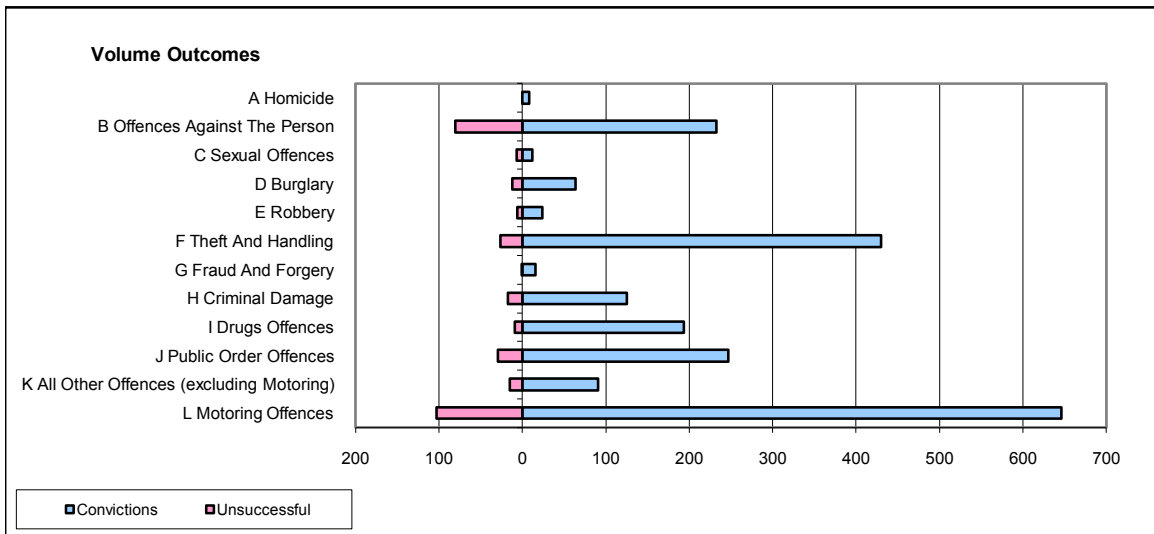
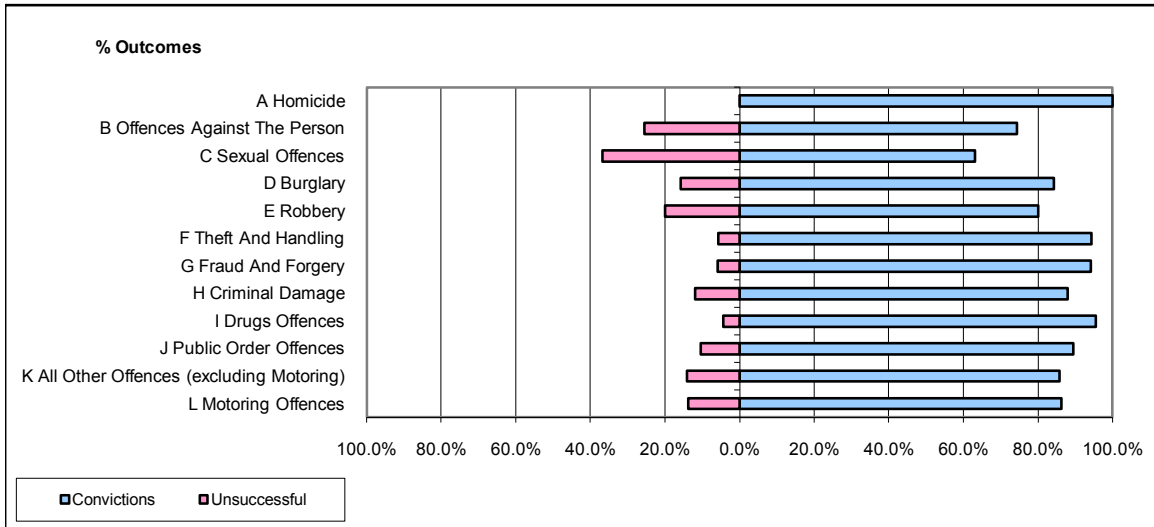


**CPS OUTCOMES BY PRINCIPAL OFFENCE CATEGORY**

**October 2008**

**P32-SouthWales**



	Convictions		Unsuccessful	
	Number of Defendants	%	Number of Defendants	%
<b>A Homicide</b>	8	100.0%	0	0.0%
<b>B Offences Against The Person</b>	233	74.4%	80	25.6%
<b>C Sexual Offences</b>	12	63.2%	7	36.8%
<b>D Burglary</b>	64	84.2%	12	15.8%
<b>E Robbery</b>	24	80.0%	6	20.0%
<b>F Theft And Handling</b>	430	94.3%	26	5.7%
<b>G Fraud And Forgery</b>	16	94.1%	1	5.9%
<b>H Criminal Damage</b>	125	88.0%	17	12.0%
<b>I Drugs Offences</b>	194	95.6%	9	4.4%
<b>J Public Order Offences</b>	247	89.5%	29	10.5%
<b>K All Other Offences (excluding Motoring)</b>	91	85.8%	15	14.2%
<b>L Motoring Offences</b>	646	86.2%	103	13.8%
<b>Admin Finalisations</b>	0	0.0%	65	100.0%
<b>TOTAL</b>	<b>2,090</b>	<b>85.0%</b>	<b>370</b>	<b>15.0%</b>