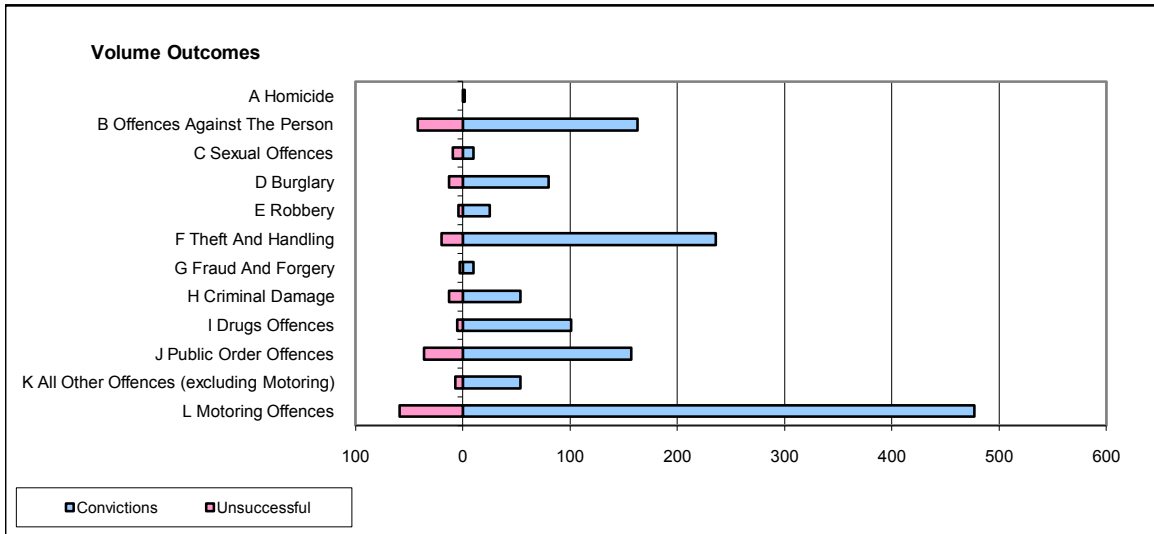
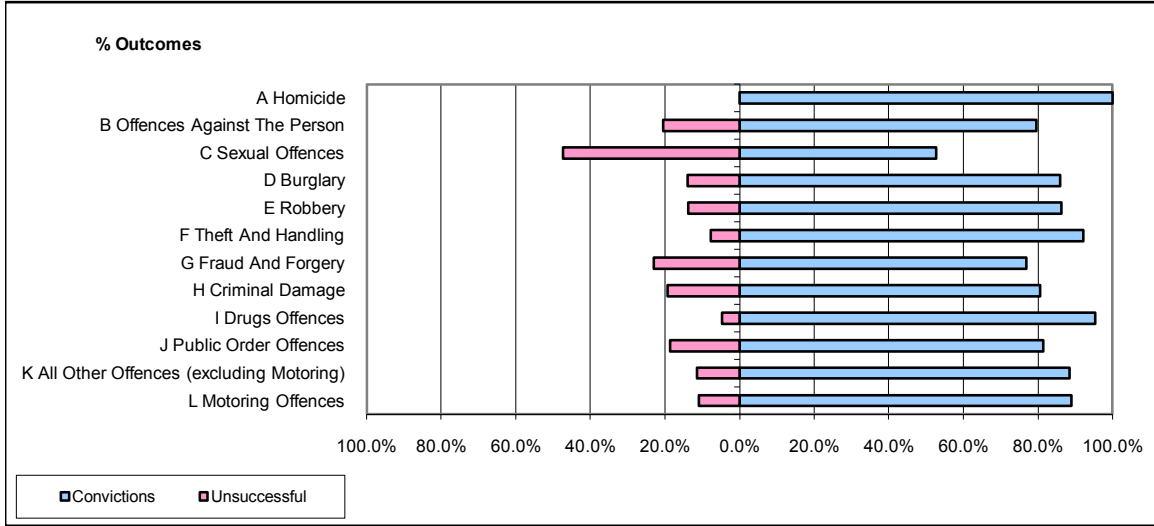


**CPS OUTCOMES BY PRINCIPAL OFFENCE CATEGORY**

**October 2008**

**P31-Nottinghamshire**



|  | Convictions          |              | Unsuccessful         |              |
|--|----------------------|--------------|----------------------|--------------|
|  | Number of Defendants | %            | Number of Defendants | %            |
| <b>A Homicide</b>                                | 2                    | 100.0%       | 0                    | 0.0%         |
| <b>B Offences Against The Person</b>             | 163                  | 79.5%        | 42                   | 20.5%        |
| <b>C Sexual Offences</b>                         | 10                   | 52.6%        | 9                    | 47.4%        |
| <b>D Burglary</b>                                | 80                   | 86.0%        | 13                   | 14.0%        |
| <b>E Robbery</b>                                 | 25                   | 86.2%        | 4                    | 13.8%        |
| <b>F Theft And Handling</b>                      | 236                  | 92.2%        | 20                   | 7.8%         |
| <b>G Fraud And Forgery</b>                       | 10                   | 76.9%        | 3                    | 23.1%        |
| <b>H Criminal Damage</b>                         | 54                   | 80.6%        | 13                   | 19.4%        |
| <b>I Drugs Offences</b>                          | 101                  | 95.3%        | 5                    | 4.7%         |
| <b>J Public Order Offences</b>                   | 157                  | 81.3%        | 36                   | 18.7%        |
| <b>K All Other Offences (excluding Motoring)</b> | 54                   | 88.5%        | 7                    | 11.5%        |
| <b>L Motoring Offences</b>                       | 477                  | 89.0%        | 59                   | 11.0%        |
| <b>Admin Finalisations</b>                       | 0                    | 0.0%         | 19                   | 100.0%       |
| <b>TOTAL</b>                                     | <b>1,369</b>         | <b>85.6%</b> | <b>230</b>           | <b>14.4%</b> |