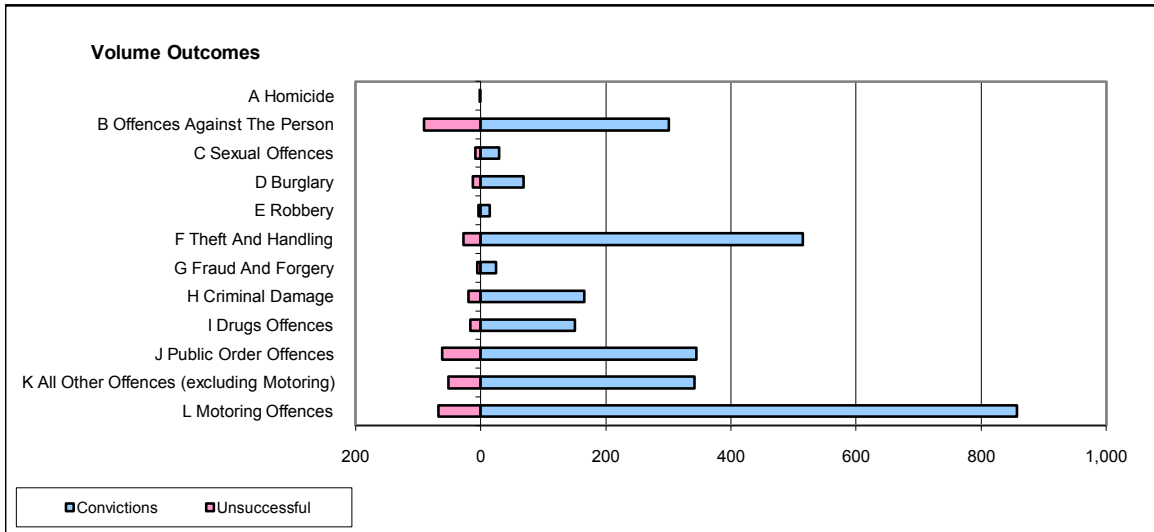
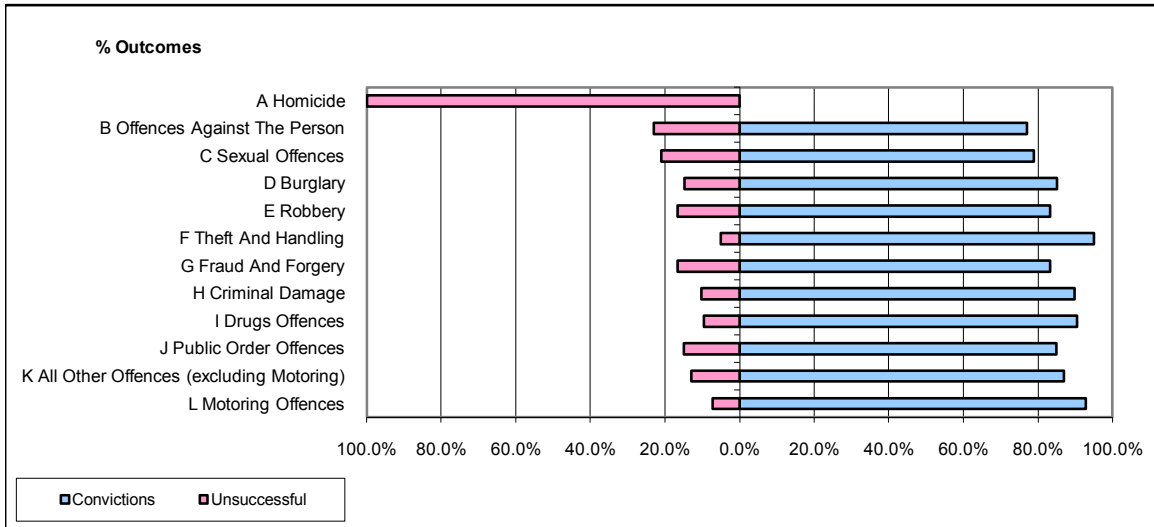


**CPS OUTCOMES BY PRINCIPAL OFFENCE CATEGORY**

**October 2008**

**P28-Northumbria**



	Convictions		Unsuccessful	
	Number of Defendants	%	Number of Defendants	%
<b>A Homicide</b>	<b>0</b>	<b>0.0%</b>	<b>1</b>	<b>100.0%</b>
<b>B Offences Against The Person</b>	<b>301</b>	<b>77.0%</b>	<b>90</b>	<b>23.0%</b>
<b>C Sexual Offences</b>	<b>30</b>	<b>78.9%</b>	<b>8</b>	<b>21.1%</b>
<b>D Burglary</b>	<b>69</b>	<b>85.2%</b>	<b>12</b>	<b>14.8%</b>
<b>E Robbery</b>	<b>15</b>	<b>83.3%</b>	<b>3</b>	<b>16.7%</b>
<b>F Theft And Handling</b>	<b>515</b>	<b>95.0%</b>	<b>27</b>	<b>5.0%</b>
<b>G Fraud And Forgery</b>	<b>25</b>	<b>83.3%</b>	<b>5</b>	<b>16.7%</b>
<b>H Criminal Damage</b>	<b>166</b>	<b>89.7%</b>	<b>19</b>	<b>10.3%</b>
<b>I Drugs Offences</b>	<b>151</b>	<b>90.4%</b>	<b>16</b>	<b>9.6%</b>
<b>J Public Order Offences</b>	<b>345</b>	<b>85.0%</b>	<b>61</b>	<b>15.0%</b>
<b>K All Other Offences (excluding Motoring)</b>	<b>342</b>	<b>87.0%</b>	<b>51</b>	<b>13.0%</b>
<b>L Motoring Offences</b>	<b>857</b>	<b>92.7%</b>	<b>67</b>	<b>7.3%</b>
<b>Admin Finalisations</b>	<b>0</b>	<b>0.0%</b>	<b>25</b>	<b>100.0%</b>
<b>TOTAL</b>	<b>2,816</b>	<b>88.0%</b>	<b>385</b>	<b>12.0%</b>