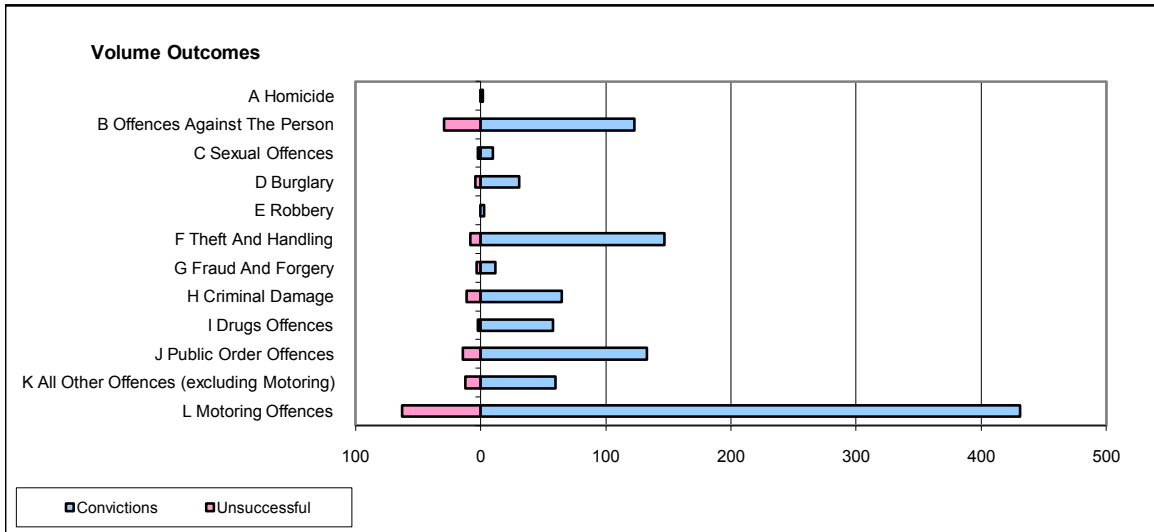
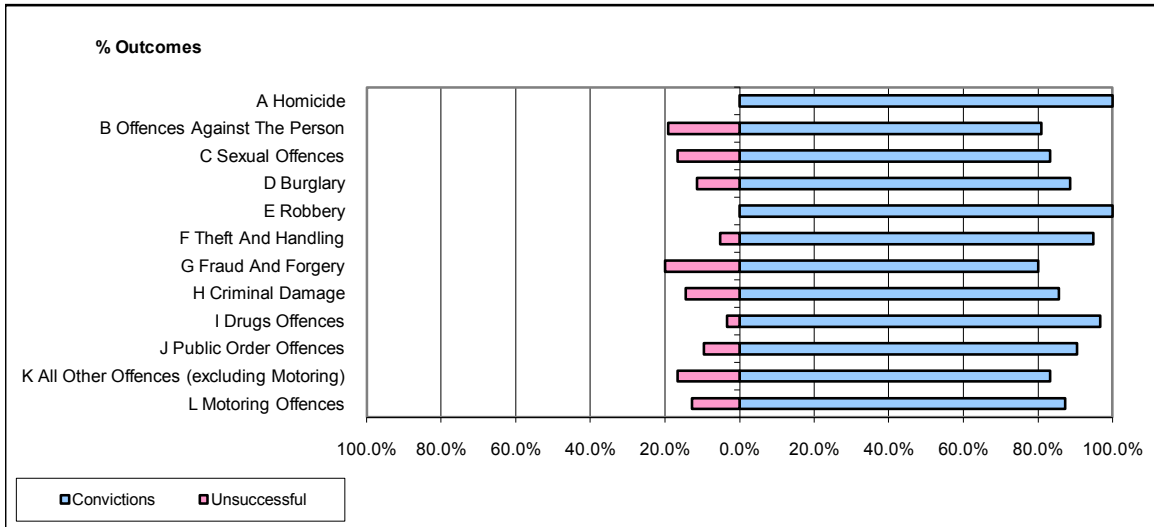


CPS OUTCOMES BY PRINCIPAL OFFENCE CATEGORY

October 2008

P29-NorthWales



	Convictions		Unsuccessful	
	Number of Defendants	%	Number of Defendants	%
A Homicide	2	100.0%	0	0.0%
B Offences Against The Person	123	80.9%	29	19.1%
C Sexual Offences	10	83.3%	2	16.7%
D Burglary	31	88.6%	4	11.4%
E Robbery	3	100.0%	0	0.0%
F Theft And Handling	147	94.8%	8	5.2%
G Fraud And Forgery	12	80.0%	3	20.0%
H Criminal Damage	65	85.5%	11	14.5%
I Drugs Offences	58	96.7%	2	3.3%
J Public Order Offences	133	90.5%	14	9.5%
K All Other Offences (excluding Motoring)	60	83.3%	12	16.7%
L Motoring Offences	431	87.2%	63	12.8%
Admin Finalisations	0	0.0%	4	100.0%
TOTAL	1,075	87.6%	152	12.4%