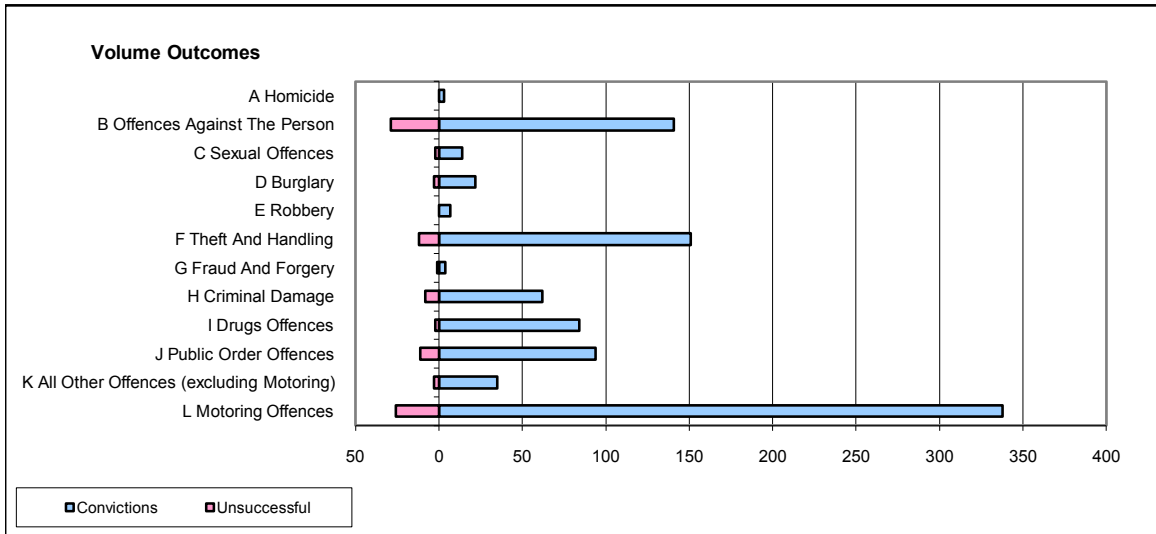
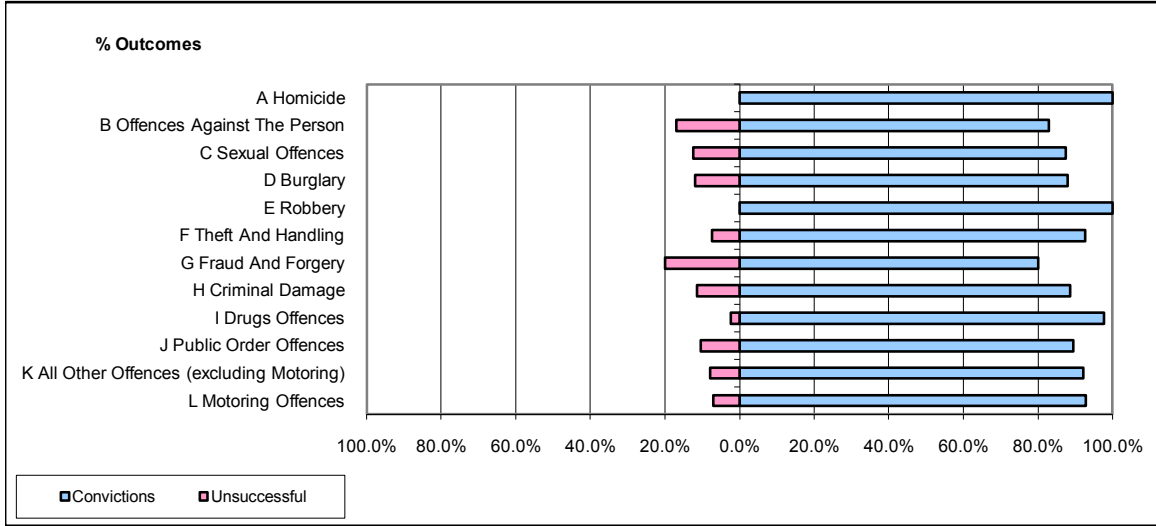


CPS OUTCOMES BY PRINCIPAL OFFENCE CATEGORY

October 2008

P26-Norfolk



	Convictions		Unsuccessful	
	Number of Defendants	%	Number of Defendants	%
A Homicide	3	100.0%	0	0.0%
B Offences Against The Person	141	82.9%	29	17.1%
C Sexual Offences	14	87.5%	2	12.5%
D Burglary	22	88.0%	3	12.0%
E Robbery	7	100.0%	0	0.0%
F Theft And Handling	151	92.6%	12	7.4%
G Fraud And Forgery	4	80.0%	1	20.0%
H Criminal Damage	62	88.6%	8	11.4%
I Drugs Offences	84	97.7%	2	2.3%
J Public Order Offences	94	89.5%	11	10.5%
K All Other Offences (excluding Motoring)	35	92.1%	3	7.9%
L Motoring Offences	338	92.9%	26	7.1%
Admin Finalisations	0	0.0%	21	100.0%
TOTAL	955	89.0%	118	11.0%