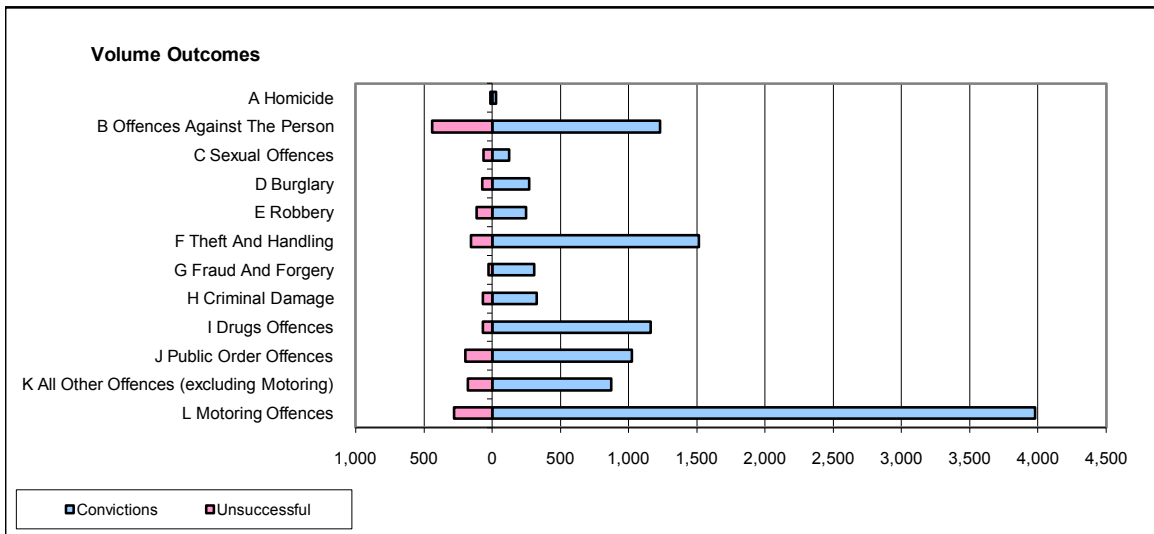
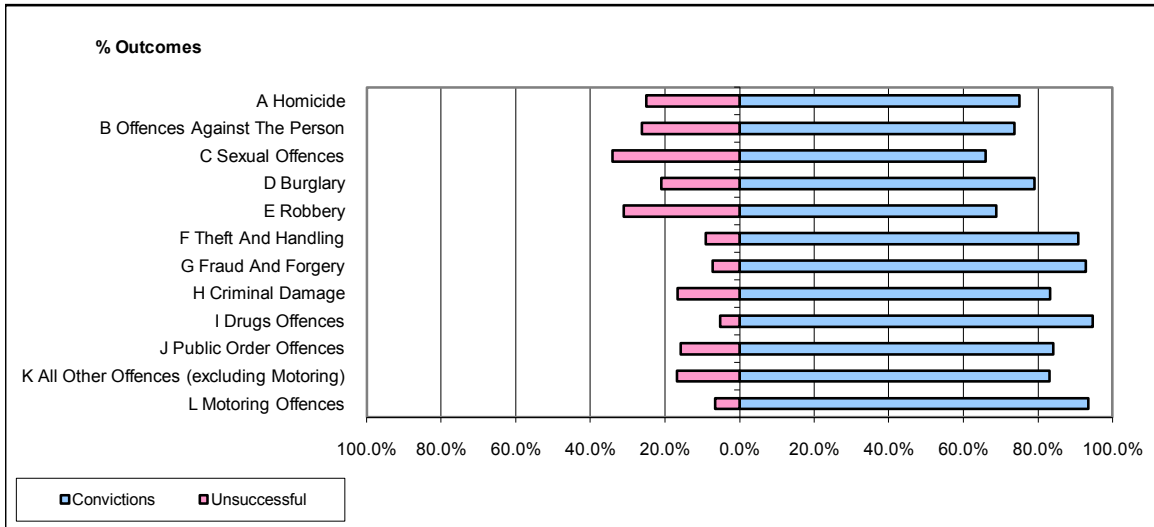


CPS OUTCOMES BY PRINCIPAL OFFENCE CATEGORY

October 2008

P25-Metropolitan&City



	Convictions		Unsuccessful	
	Number of Defendants	%	Number of Defendants	%
A Homicide	30	75.0%	10	25.0%
B Offences Against The Person	1,233	73.7%	439	26.3%
C Sexual Offences	124	66.0%	64	34.0%
D Burglary	271	79.0%	72	21.0%
E Robbery	250	68.9%	113	31.1%
F Theft And Handling	1,517	90.8%	153	9.2%
G Fraud And Forgery	307	92.7%	24	7.3%
H Criminal Damage	329	83.3%	66	16.7%
I Drugs Offences	1,163	94.7%	65	5.3%
J Public Order Offences	1,024	84.1%	193	15.9%
K All Other Offences (excluding Motoring)	874	83.2%	177	16.8%
L Motoring Offences	3,980	93.4%	280	6.6%
Admin Finalisations	0	0.0%	342	100.0%
TOTAL	11,102	84.7%	1,998	15.3%