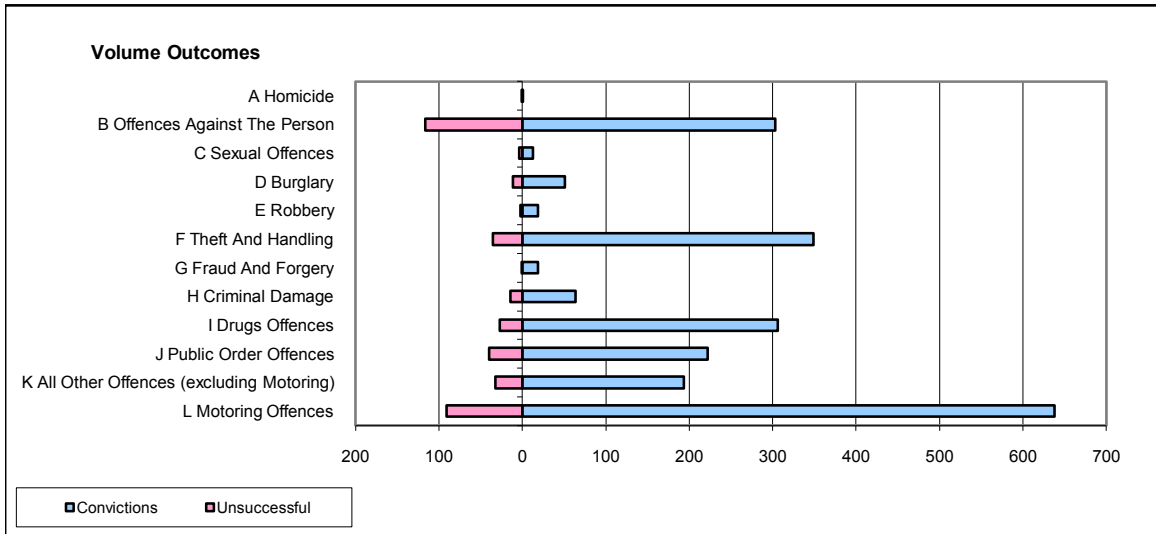
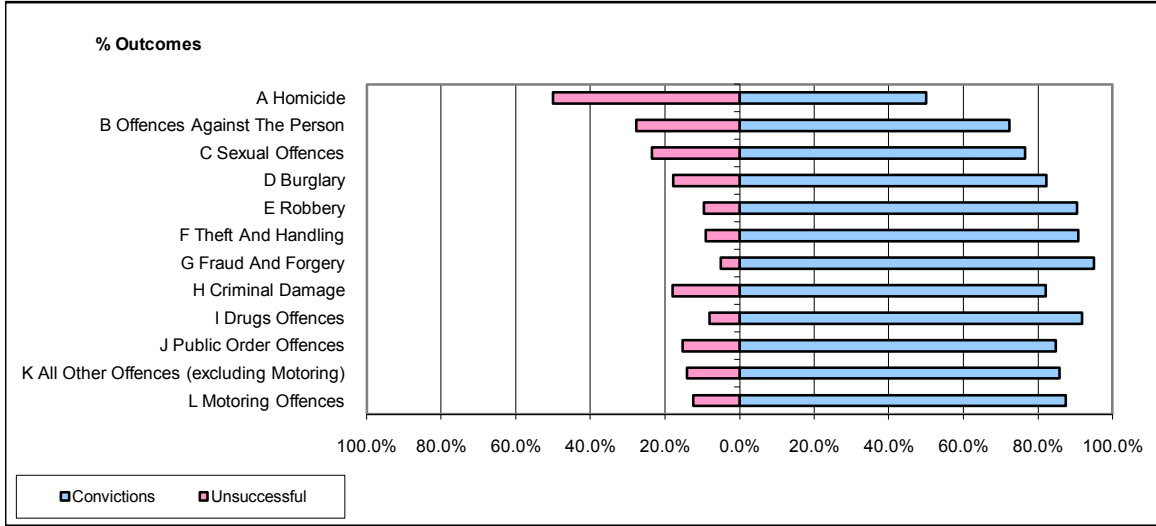


CPS OUTCOMES BY PRINCIPAL OFFENCE CATEGORY

October 2008

P24-Merseyside



| | Convictions | | Unsuccessful | |
|--|----------------------|--------------|----------------------|--------------|
| | Number of Defendants | % | Number of Defendants | % |
| A Homicide | 1 | 50.0% | 1 | 50.0% |
| B Offences Against The Person | 303 | 72.3% | 116 | 27.7% |
| C Sexual Offences | 13 | 76.5% | 4 | 23.5% |
| D Burglary | 51 | 82.3% | 11 | 17.7% |
| E Robbery | 19 | 90.5% | 2 | 9.5% |
| F Theft And Handling | 349 | 90.9% | 35 | 9.1% |
| G Fraud And Forgery | 19 | 95.0% | 1 | 5.0% |
| H Criminal Damage | 64 | 82.1% | 14 | 17.9% |
| I Drugs Offences | 306 | 91.9% | 27 | 8.1% |
| J Public Order Offences | 222 | 84.7% | 40 | 15.3% |
| K All Other Offences (excluding Motoring) | 194 | 85.8% | 32 | 14.2% |
| L Motoring Offences | 638 | 87.5% | 91 | 12.5% |
| Admin Finalisations | 0 | 0.0% | 42 | 100.0% |
| TOTAL | 2,179 | 84.0% | 416 | 16.0% |