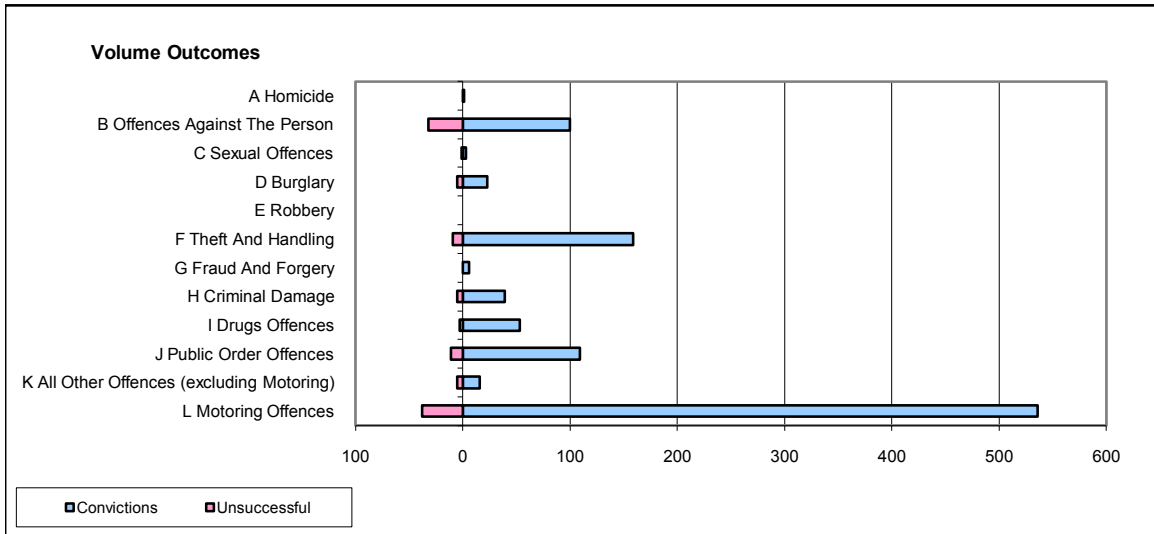
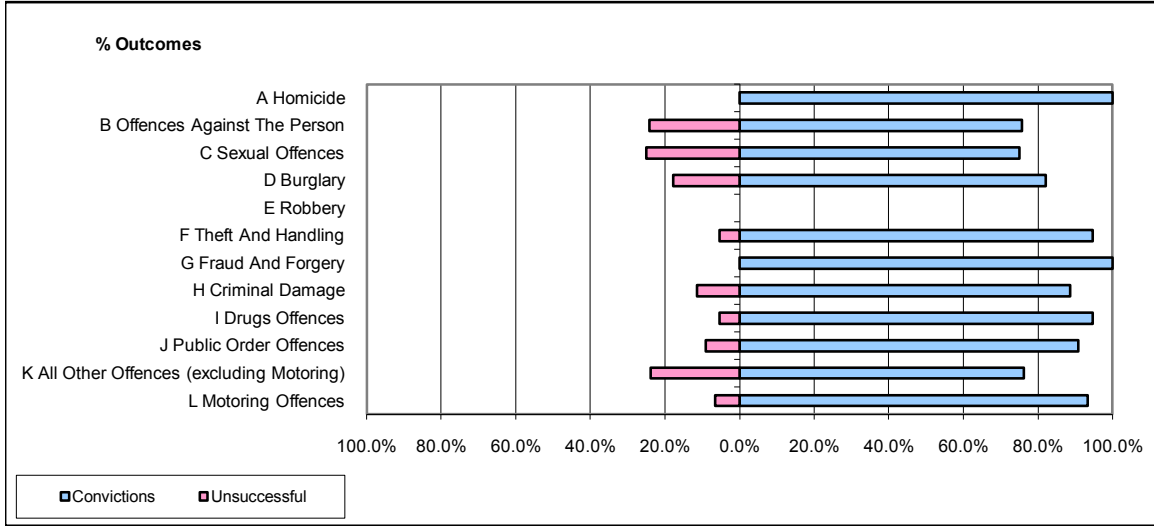


CPS OUTCOMES BY PRINCIPAL OFFENCE CATEGORY

October 2008

P23-Lincolnshire



	Convictions		Unsuccessful	
	Number of Defendants	%	Number of Defendants	%
A Homicide	1	100.0%	0	0.0%
B Offences Against The Person	100	75.8%	32	24.2%
C Sexual Offences	3	75.0%	1	25.0%
D Burglary	23	82.1%	5	17.9%
E Robbery	0	0	0	0
F Theft And Handling	159	94.6%	9	5.4%
G Fraud And Forgery	6	100.0%	0	0.0%
H Criminal Damage	39	88.6%	5	11.4%
I Drugs Offences	53	94.6%	3	5.4%
J Public Order Offences	109	90.8%	11	9.2%
K All Other Offences (excluding Motoring)	16	76.2%	5	23.8%
L Motoring Offences	536	93.4%	38	6.6%
Admin Finalisations	0	0.0%	20	100.0%
TOTAL	1,045	89.0%	129	11.0%