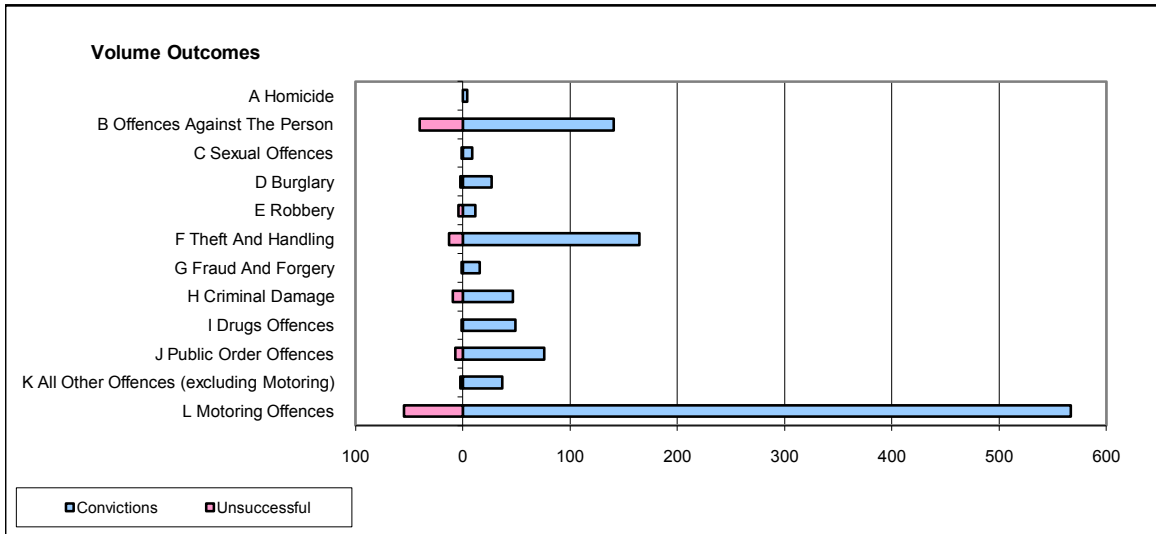
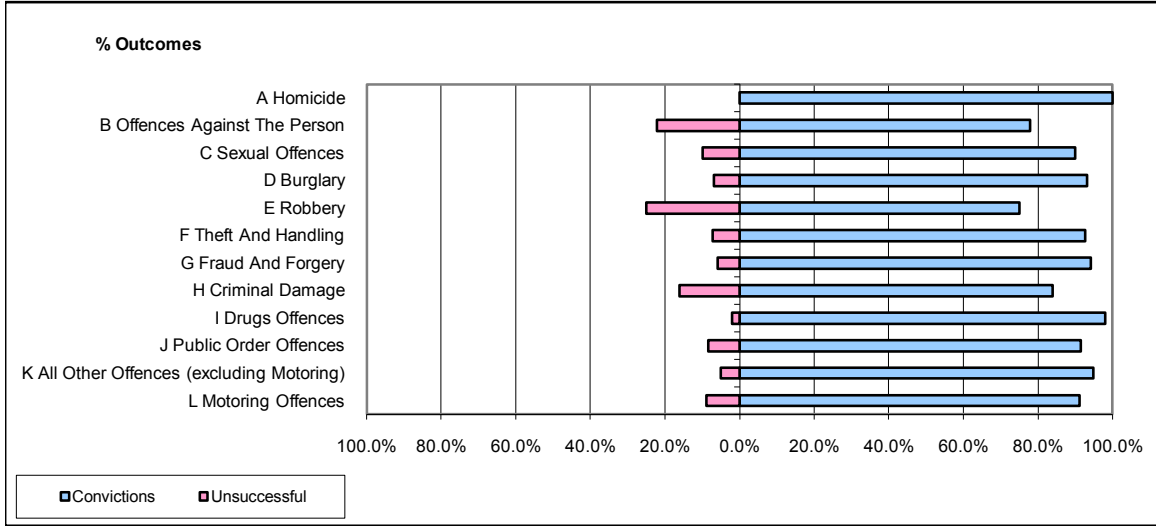


CPS OUTCOMES BY PRINCIPAL OFFENCE CATEGORY

October 2008

P22-Leicestershire



	Convictions		Unsuccessful	
	Number of Defendants	%	Number of Defendants	%
A Homicide	4	100.0%	0	0.0%
B Offences Against The Person	141	77.9%	40	22.1%
C Sexual Offences	9	90.0%	1	10.0%
D Burglary	27	93.1%	2	6.9%
E Robbery	12	75.0%	4	25.0%
F Theft And Handling	165	92.7%	13	7.3%
G Fraud And Forgery	16	94.1%	1	5.9%
H Criminal Damage	47	83.9%	9	16.1%
I Drugs Offences	49	98.0%	1	2.0%
J Public Order Offences	76	91.6%	7	8.4%
K All Other Offences (excluding Motoring)	37	94.9%	2	5.1%
L Motoring Offences	567	91.2%	55	8.8%
Admin Finalisations	0	0.0%	14	100.0%
TOTAL	1,150	88.5%	149	11.5%