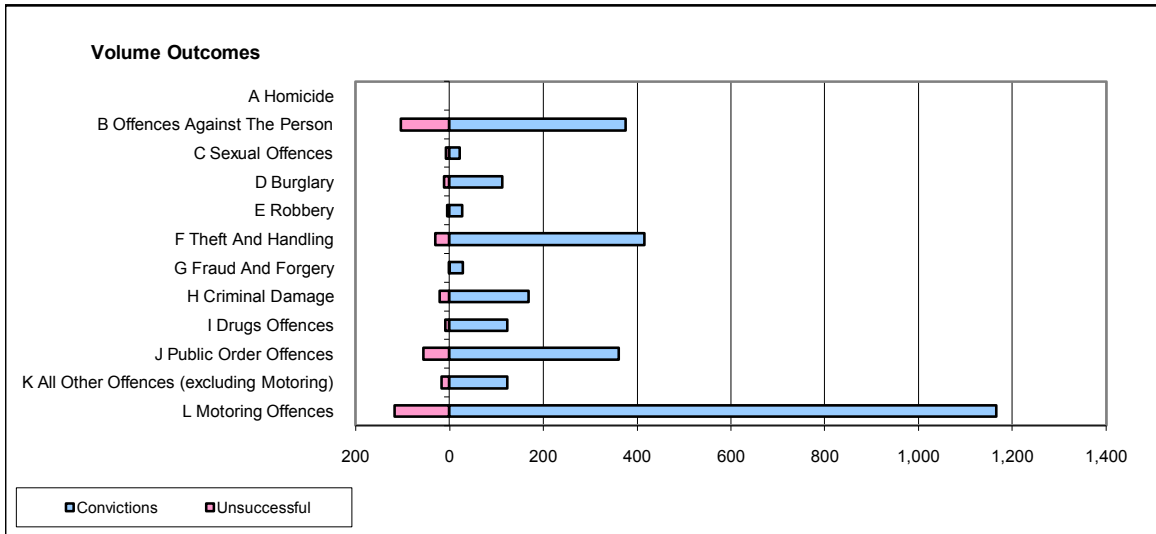
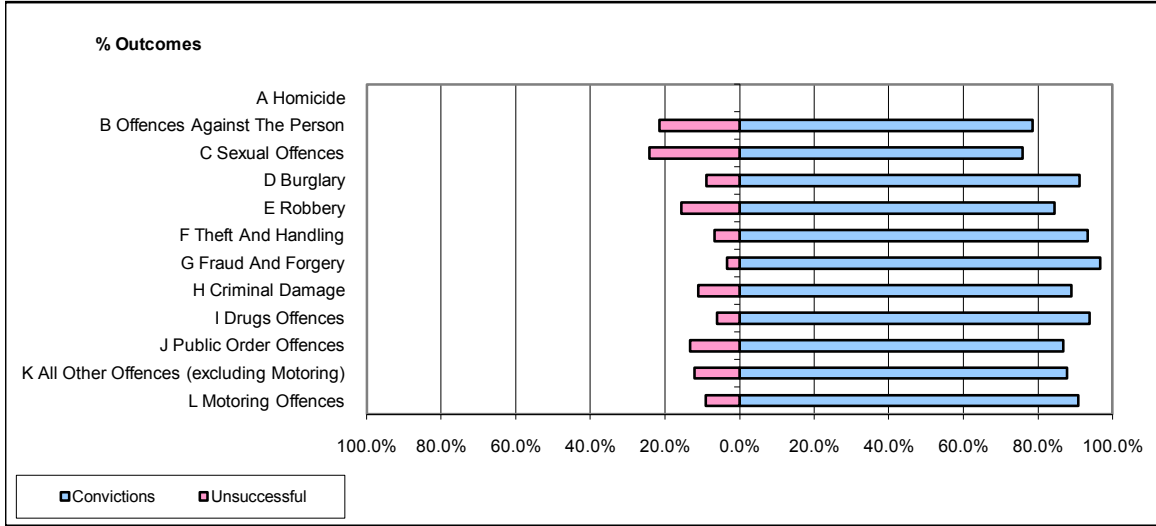


**CPS OUTCOMES BY PRINCIPAL OFFENCE CATEGORY**

**October 2008**

**P21-Lancashire**



	Convictions		Unsuccessful	
	Number of Defendants	%	Number of Defendants	%
<b>A Homicide</b>	<b>0</b>	<b>0</b>	<b>0</b>	<b>0</b>
<b>B Offences Against The Person</b>	<b>376</b>	<b>78.5%</b>	<b>103</b>	<b>21.5%</b>
<b>C Sexual Offences</b>	<b>22</b>	<b>75.9%</b>	<b>7</b>	<b>24.1%</b>
<b>D Burglary</b>	<b>113</b>	<b>91.1%</b>	<b>11</b>	<b>8.9%</b>
<b>E Robbery</b>	<b>27</b>	<b>84.4%</b>	<b>5</b>	<b>15.6%</b>
<b>F Theft And Handling</b>	<b>416</b>	<b>93.3%</b>	<b>30</b>	<b>6.7%</b>
<b>G Fraud And Forgery</b>	<b>29</b>	<b>96.7%</b>	<b>1</b>	<b>3.3%</b>
<b>H Criminal Damage</b>	<b>169</b>	<b>88.9%</b>	<b>21</b>	<b>11.1%</b>
<b>I Drugs Offences</b>	<b>123</b>	<b>93.9%</b>	<b>8</b>	<b>6.1%</b>
<b>J Public Order Offences</b>	<b>361</b>	<b>86.8%</b>	<b>55</b>	<b>13.2%</b>
<b>K All Other Offences (excluding Motoring)</b>	<b>123</b>	<b>87.9%</b>	<b>17</b>	<b>12.1%</b>
<b>L Motoring Offences</b>	<b>1,165</b>	<b>90.9%</b>	<b>117</b>	<b>9.1%</b>
<b>Admin Finalisations</b>	<b>0</b>	<b>0.0%</b>	<b>35</b>	<b>100.0%</b>
<b>TOTAL</b>	<b>2,924</b>	<b>87.7%</b>	<b>410</b>	<b>12.3%</b>