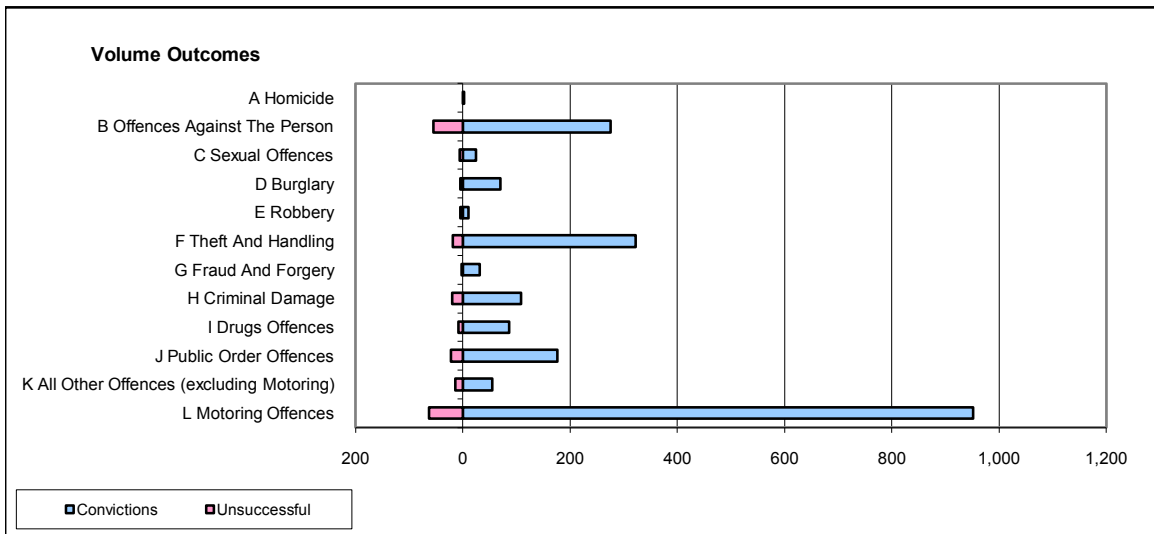
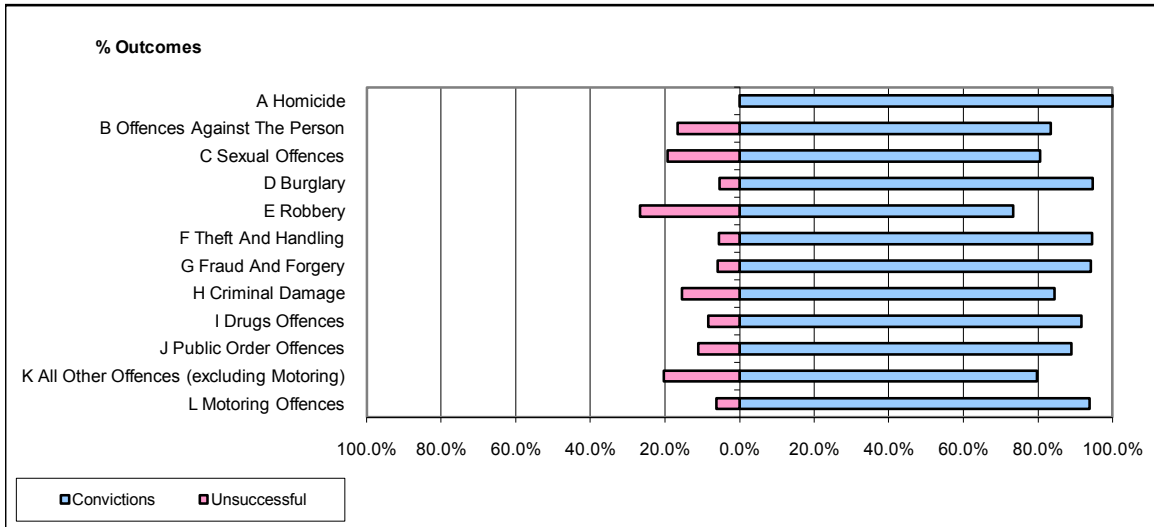


**CPS OUTCOMES BY PRINCIPAL OFFENCE CATEGORY**

**October 2008**

**P20-Kent**



	Convictions		Unsuccessful	
	Number of Defendants	%	Number of Defendants	%
<b>A Homicide</b>	3	100.0%	0	0.0%
<b>B Offences Against The Person</b>	276	83.4%	55	16.6%
<b>C Sexual Offences</b>	25	80.6%	6	19.4%
<b>D Burglary</b>	70	94.6%	4	5.4%
<b>E Robbery</b>	11	73.3%	4	26.7%
<b>F Theft And Handling</b>	322	94.4%	19	5.6%
<b>G Fraud And Forgery</b>	32	94.1%	2	5.9%
<b>H Criminal Damage</b>	109	84.5%	20	15.5%
<b>I Drugs Offences</b>	87	91.6%	8	8.4%
<b>J Public Order Offences</b>	177	88.9%	22	11.1%
<b>K All Other Offences (excluding Motoring)</b>	55	79.7%	14	20.3%
<b>L Motoring Offences</b>	952	93.8%	63	6.2%
<b>Admin Finalisations</b>	0	0.0%	29	100.0%
<b>TOTAL</b>	<b>2,119</b>	<b>89.6%</b>	<b>246</b>	<b>10.4%</b>