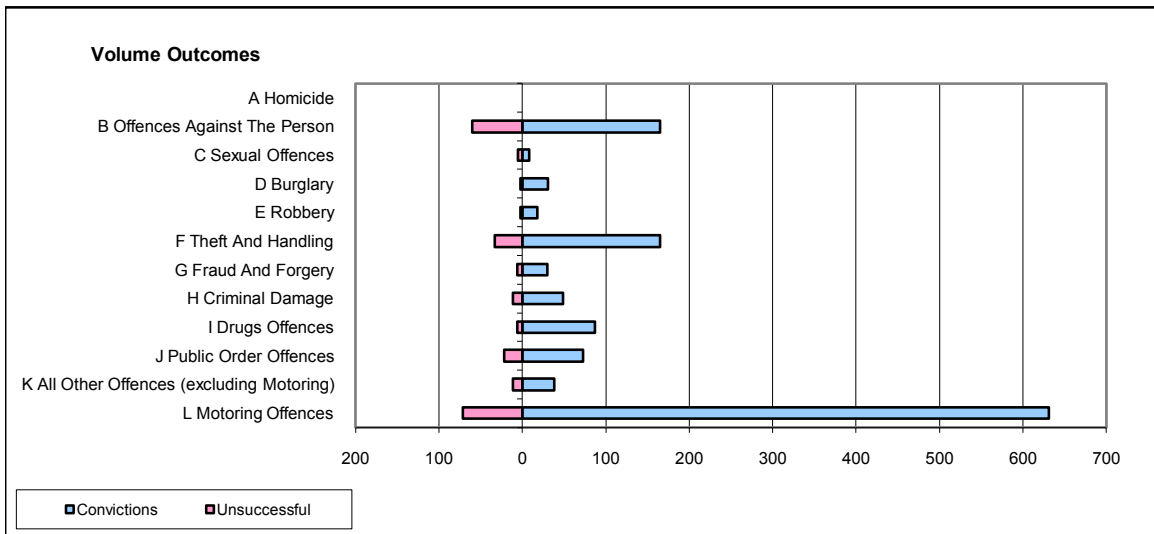
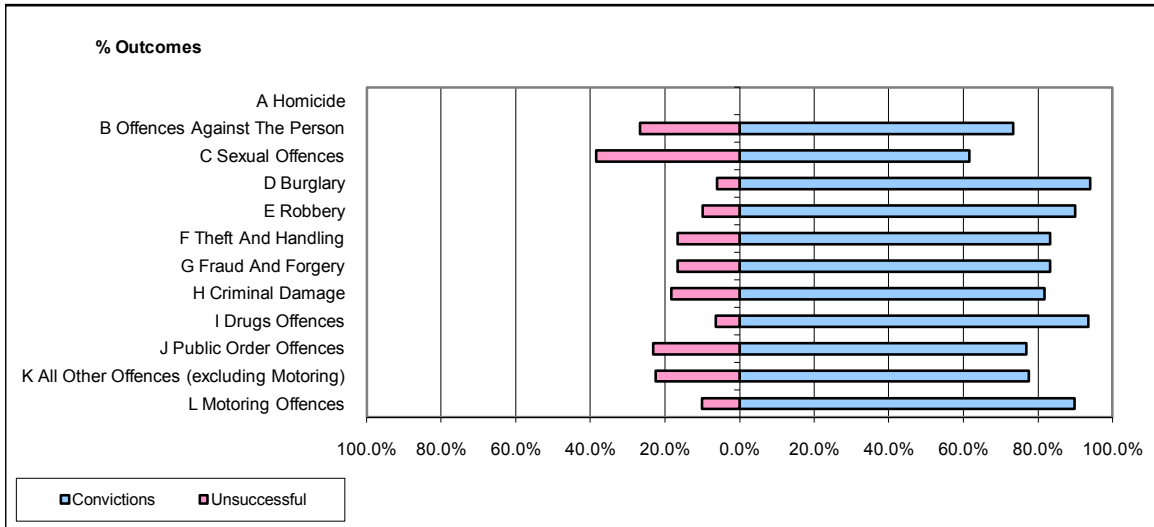


**CPS OUTCOMES BY PRINCIPAL OFFENCE CATEGORY**

**October 2008**

**P18-Hertfordshire**



	Convictions		Unsuccessful	
	Number of Defendants	%	Number of Defendants	%
<b>A Homicide</b>	0	0	0	0
<b>B Offences Against The Person</b>	165	73.3%	60	26.7%
<b>C Sexual Offences</b>	8	61.5%	5	38.5%
<b>D Burglary</b>	31	93.9%	2	6.1%
<b>E Robbery</b>	18	90.0%	2	10.0%
<b>F Theft And Handling</b>	165	83.3%	33	16.7%
<b>G Fraud And Forgery</b>	30	83.3%	6	16.7%
<b>H Criminal Damage</b>	49	81.7%	11	18.3%
<b>I Drugs Offences</b>	87	93.5%	6	6.5%
<b>J Public Order Offences</b>	73	76.8%	22	23.2%
<b>K All Other Offences (excluding Motoring)</b>	38	77.6%	11	22.4%
<b>L Motoring Offences</b>	631	89.9%	71	10.1%
<b>Admin Finalisations</b>	0	0.0%	23	100.0%
<b>TOTAL</b>	<b>1,295</b>	<b>83.7%</b>	<b>252</b>	<b>16.3%</b>