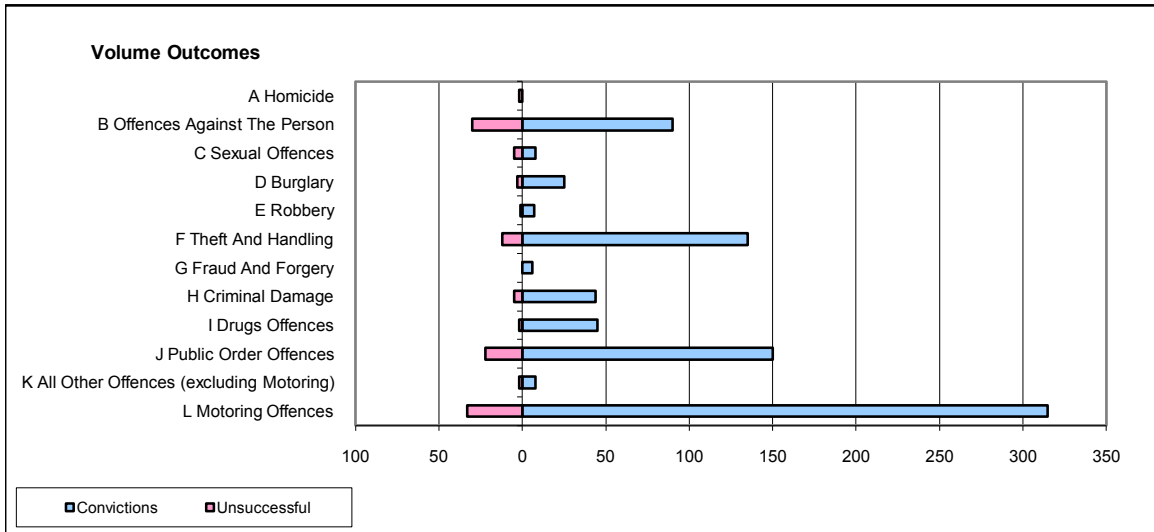
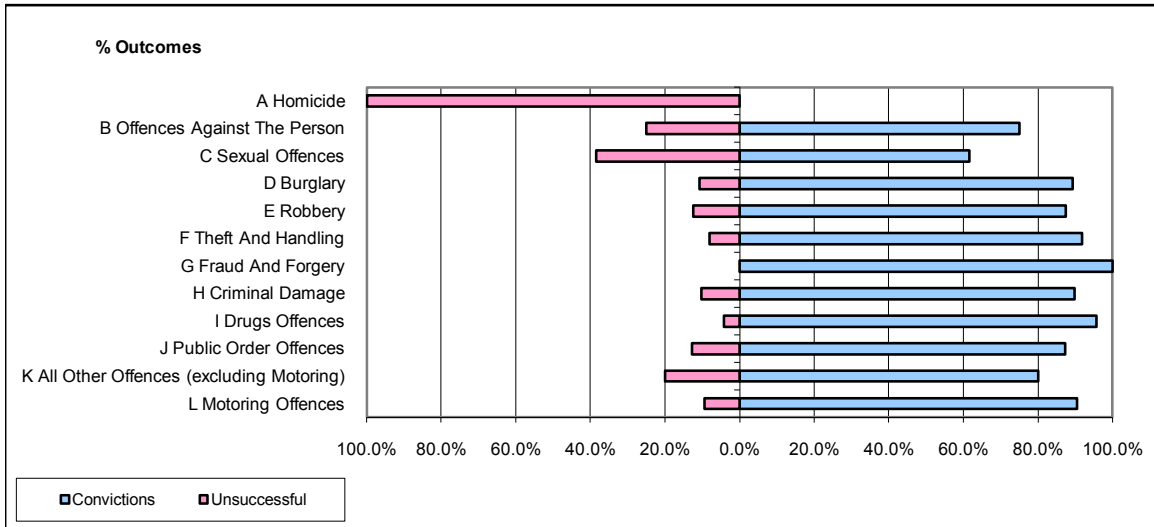


CPS OUTCOMES BY PRINCIPAL OFFENCE CATEGORY

October 2008

P16-Gwent



	Convictions		Unsuccessful	
	Number of Defendants	%	Number of Defendants	%
A Homicide	0	0.0%	2	100.0%
B Offences Against The Person	90	75.0%	30	25.0%
C Sexual Offences	8	61.5%	5	38.5%
D Burglary	25	89.3%	3	10.7%
E Robbery	7	87.5%	1	12.5%
F Theft And Handling	135	91.8%	12	8.2%
G Fraud And Forgery	6	100.0%	0	0.0%
H Criminal Damage	44	89.8%	5	10.2%
I Drugs Offences	45	95.7%	2	4.3%
J Public Order Offences	150	87.2%	22	12.8%
K All Other Offences (excluding Motoring)	8	80.0%	2	20.0%
L Motoring Offences	315	90.5%	33	9.5%
Admin Finalisations	0	0.0%	12	100.0%
TOTAL	833	86.6%	129	13.4%