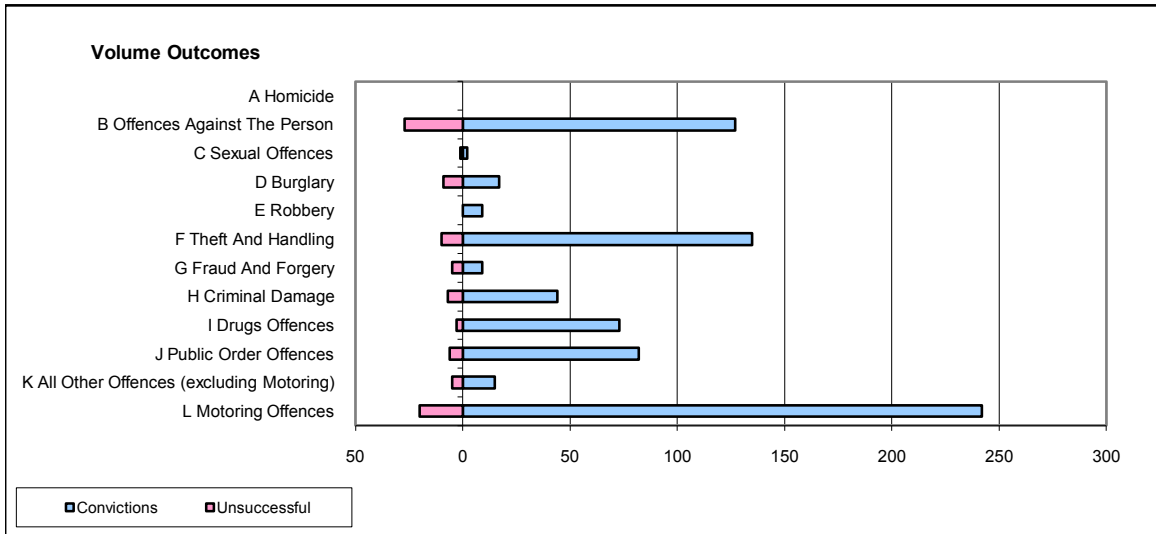
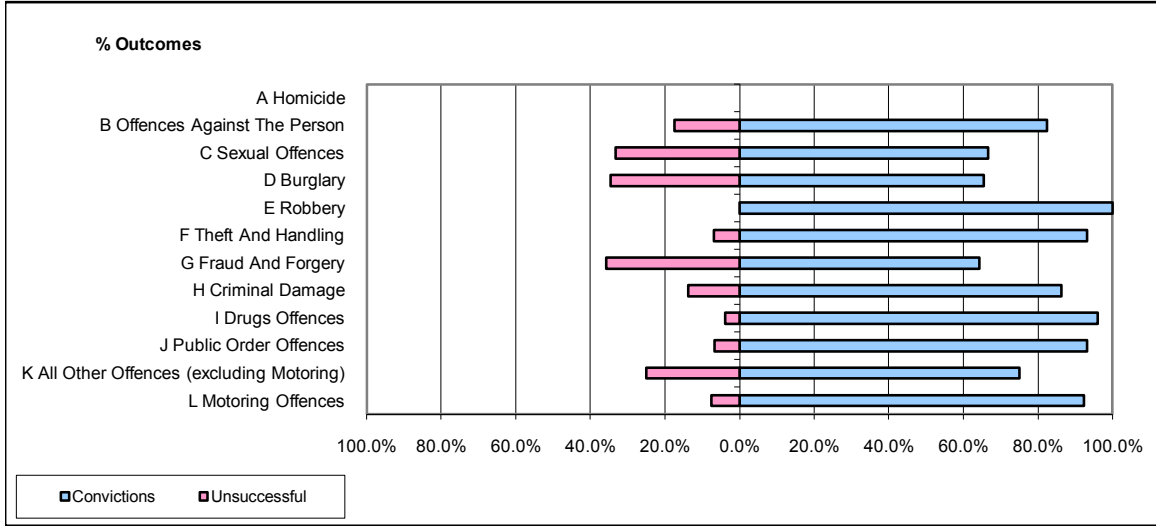


CPS OUTCOMES BY PRINCIPAL OFFENCE CATEGORY

October 2008

P14-Gloucestershire



	Convictions		Unsuccessful	
	Number of Defendants	%	Number of Defendants	%
A Homicide	0	0	0	0
B Offences Against The Person	127	82.5%	27	17.5%
C Sexual Offences	2	66.7%	1	33.3%
D Burglary	17	65.4%	9	34.6%
E Robbery	9	100.0%	0	0.0%
F Theft And Handling	135	93.1%	10	6.9%
G Fraud And Forgery	9	64.3%	5	35.7%
H Criminal Damage	44	86.3%	7	13.7%
I Drugs Offences	73	96.1%	3	3.9%
J Public Order Offences	82	93.2%	6	6.8%
K All Other Offences (excluding Motoring)	15	75.0%	5	25.0%
L Motoring Offences	242	92.4%	20	7.6%
Admin Finalisations	0	0.0%	9	100.0%
TOTAL	755	88.1%	102	11.9%