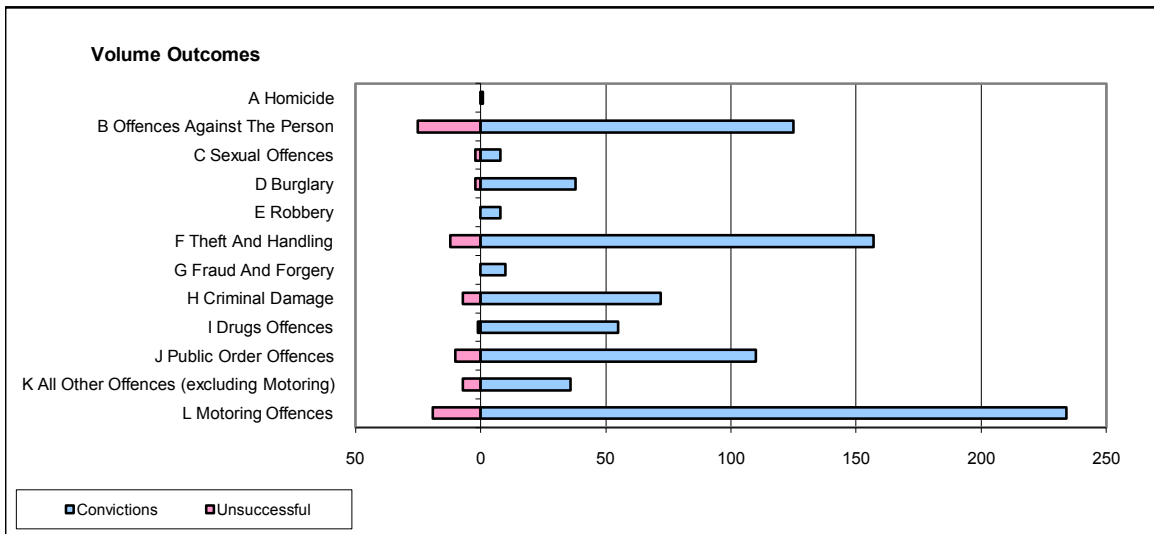
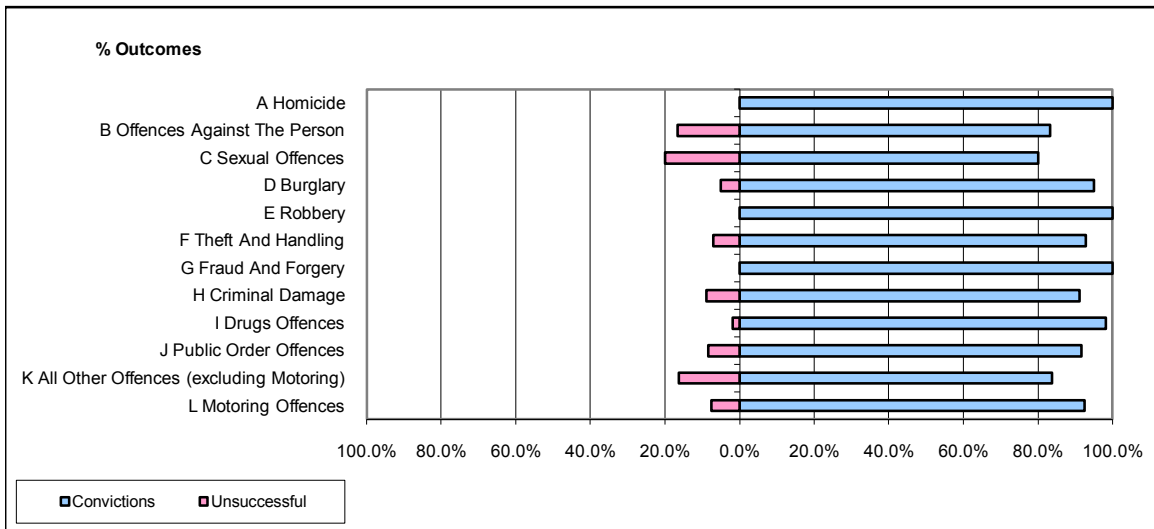


CPS OUTCOMES BY PRINCIPAL OFFENCE CATEGORY

October 2008

P11-Durham



	Convictions		Unsuccessful	
	Number of Defendants	%	Number of Defendants	%
A Homicide	1	100.0%	0	0.0%
B Offences Against The Person	125	83.3%	25	16.7%
C Sexual Offences	8	80.0%	2	20.0%
D Burglary	38	95.0%	2	5.0%
E Robbery	8	100.0%	0	0.0%
F Theft And Handling	157	92.9%	12	7.1%
G Fraud And Forgery	10	100.0%	0	0.0%
H Criminal Damage	72	91.1%	7	8.9%
I Drugs Offences	55	98.2%	1	1.8%
J Public Order Offences	110	91.7%	10	8.3%
K All Other Offences (excluding Motoring)	36	83.7%	7	16.3%
L Motoring Offences	234	92.5%	19	7.5%
Admin Finalisations	0	0.0%	13	100.0%
TOTAL	854	89.7%	98	10.3%