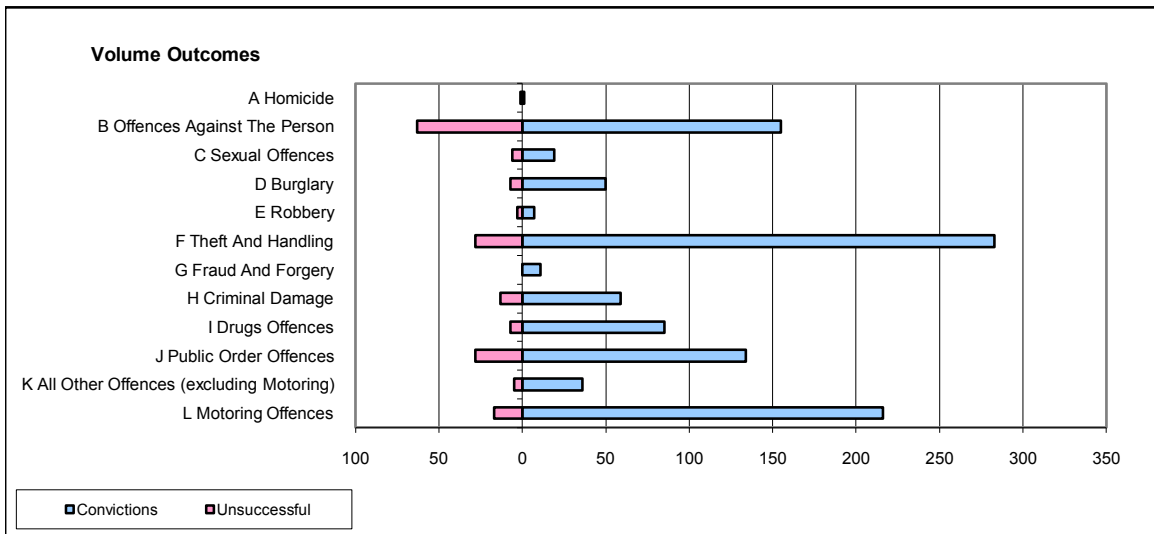
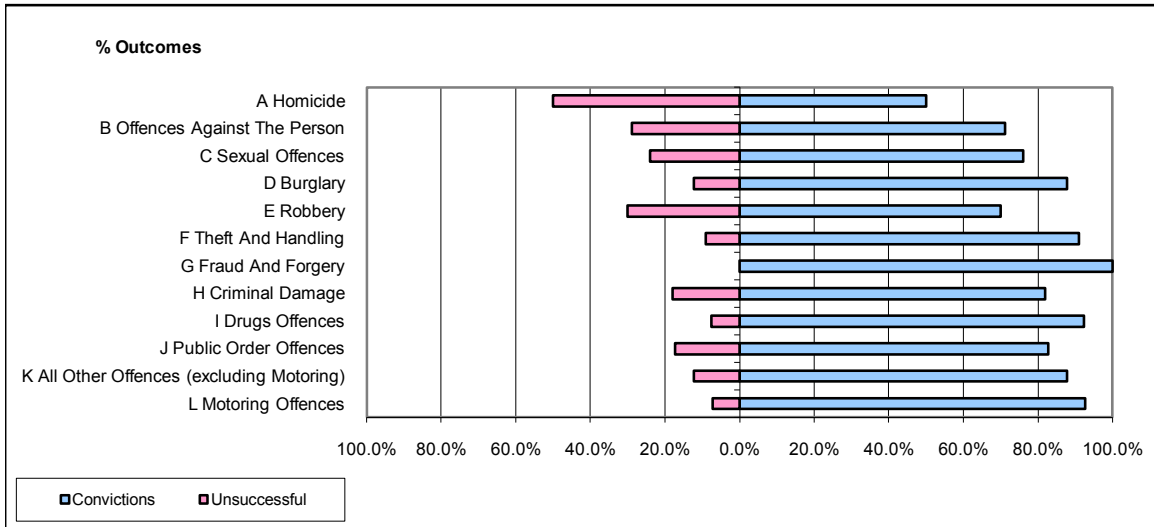


**CPS OUTCOMES BY PRINCIPAL OFFENCE CATEGORY**

**October 2008**

**P06-Cleveland**



	Convictions		Unsuccessful	
	Number of Defendants	%	Number of Defendants	%
<b>A Homicide</b>	<b>1</b>	<b>50.0%</b>	<b>1</b>	<b>50.0%</b>
<b>B Offences Against The Person</b>	<b>155</b>	<b>71.1%</b>	<b>63</b>	<b>28.9%</b>
<b>C Sexual Offences</b>	<b>19</b>	<b>76.0%</b>	<b>6</b>	<b>24.0%</b>
<b>D Burglary</b>	<b>50</b>	<b>87.7%</b>	<b>7</b>	<b>12.3%</b>
<b>E Robbery</b>	<b>7</b>	<b>70.0%</b>	<b>3</b>	<b>30.0%</b>
<b>F Theft And Handling</b>	<b>283</b>	<b>91.0%</b>	<b>28</b>	<b>9.0%</b>
<b>G Fraud And Forgery</b>	<b>11</b>	<b>100.0%</b>	<b>0</b>	<b>0.0%</b>
<b>H Criminal Damage</b>	<b>59</b>	<b>81.9%</b>	<b>13</b>	<b>18.1%</b>
<b>I Drugs Offences</b>	<b>85</b>	<b>92.4%</b>	<b>7</b>	<b>7.6%</b>
<b>J Public Order Offences</b>	<b>134</b>	<b>82.7%</b>	<b>28</b>	<b>17.3%</b>
<b>K All Other Offences (excluding Motoring)</b>	<b>36</b>	<b>87.8%</b>	<b>5</b>	<b>12.2%</b>
<b>L Motoring Offences</b>	<b>216</b>	<b>92.7%</b>	<b>17</b>	<b>7.3%</b>
<b>Admin Finalisations</b>	<b>0</b>	<b>0.0%</b>	<b>11</b>	<b>100.0%</b>
<b>TOTAL</b>	<b>1,056</b>	<b>84.8%</b>	<b>189</b>	<b>15.2%</b>