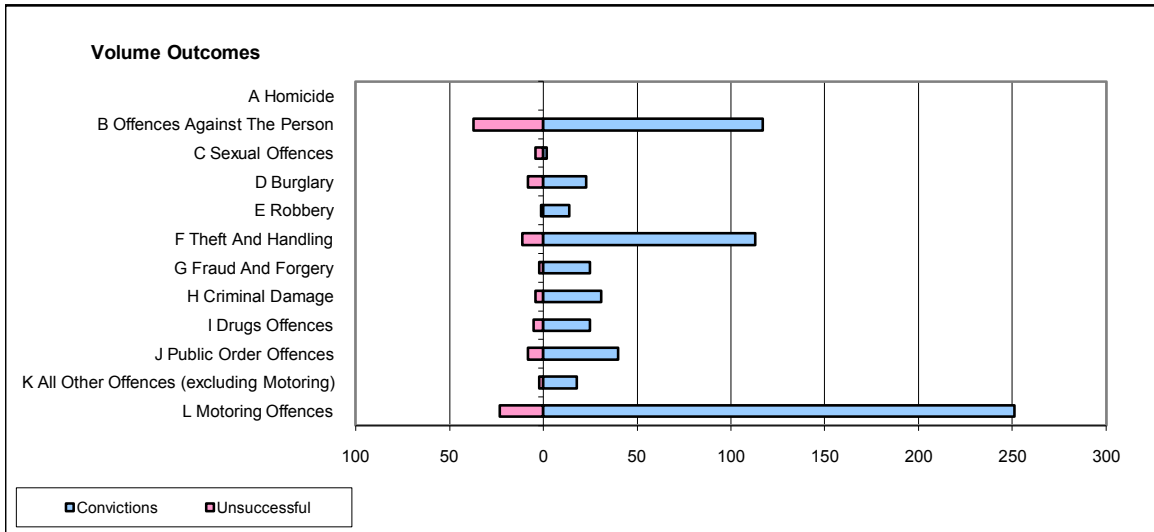
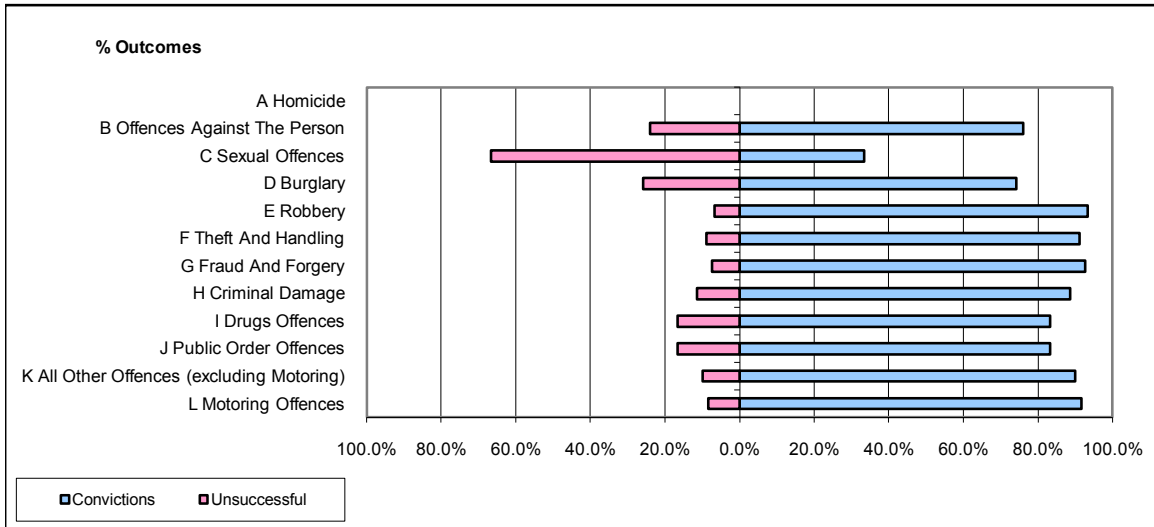


CPS OUTCOMES BY PRINCIPAL OFFENCE CATEGORY

October 2008

P02-Bedfordshire



	Convictions		Unsuccessful	
	Number of Defendants	%	Number of Defendants	%
A Homicide	0	0	0	0
B Offences Against The Person	117	76.0%	37	24.0%
C Sexual Offences	2	33.3%	4	66.7%
D Burglary	23	74.2%	8	25.8%
E Robbery	14	93.3%	1	6.7%
F Theft And Handling	113	91.1%	11	8.9%
G Fraud And Forgery	25	92.6%	2	7.4%
H Criminal Damage	31	88.6%	4	11.4%
I Drugs Offences	25	83.3%	5	16.7%
J Public Order Offences	40	83.3%	8	16.7%
K All Other Offences (excluding Motoring)	18	90.0%	2	10.0%
L Motoring Offences	251	91.6%	23	8.4%
Admin Finalisations	0	0.0%	12	100.0%
TOTAL	659	84.9%	117	15.1%