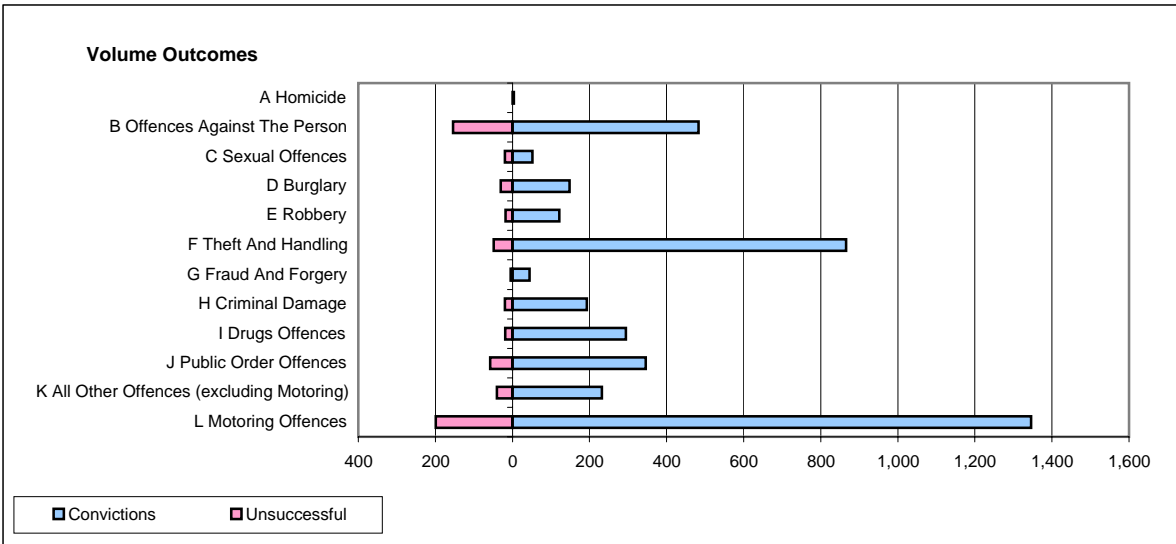
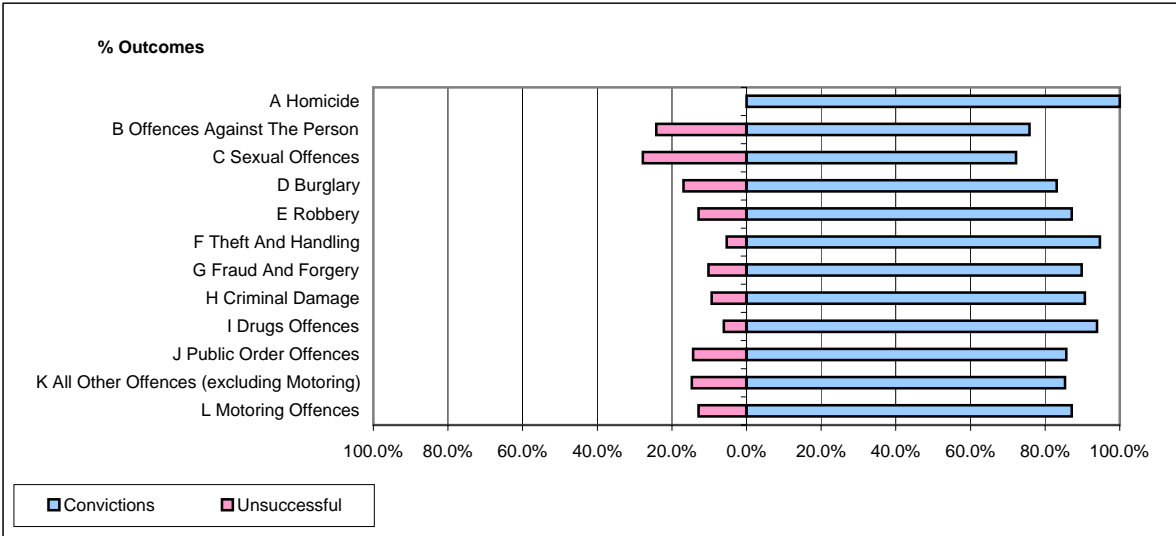


CPS OUTCOMES BY PRINCIPAL OFFENCE CATEGORY

September 2008

P41-WestMidlands



	Convictions		Unsuccessful	
	Number of Defendants	%	Number of Defendants	%
A Homicide	4	100.0%	0	0.0%
B Offences Against The Person	483	75.8%	154	24.2%
C Sexual Offences	52	72.2%	20	27.8%
D Burglary	148	83.1%	30	16.9%
E Robbery	122	87.1%	18	12.9%
F Theft And Handling	866	94.6%	49	5.4%
G Fraud And Forgery	44	89.8%	5	10.2%
H Criminal Damage	193	90.6%	20	9.4%
I Drugs Offences	294	93.9%	19	6.1%
J Public Order Offences	346	85.6%	58	14.4%
K All Other Offences (excluding Motoring)	232	85.3%	40	14.7%
L Motoring Offences	1,346	87.1%	199	12.9%
Admin Finalisations	0	0.0%	64	100.0%
TOTAL	4,130	85.9%	676	14.1%