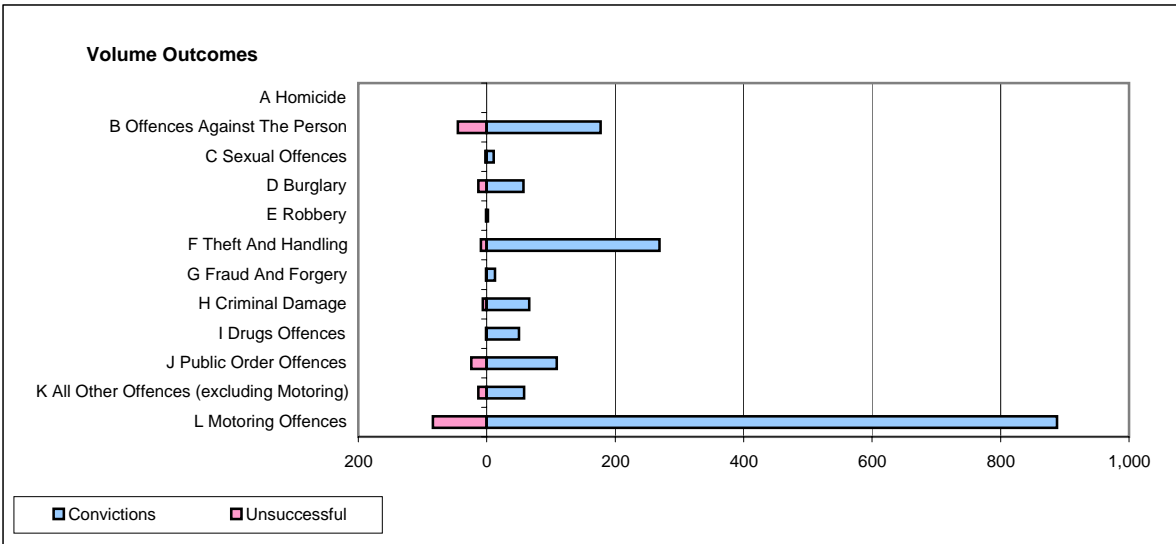
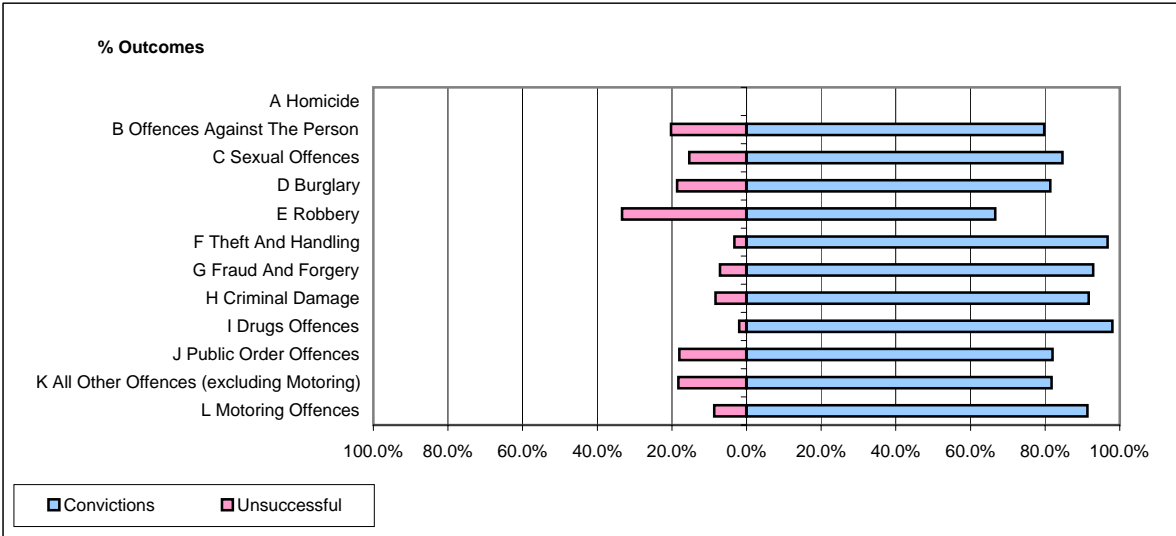


CPS OUTCOMES BY PRINCIPAL OFFENCE CATEGORY

September 2008

P40-WestMercia



	Convictions		Unsuccessful	
	Number of Defendants	%	Number of Defendants	%
A Homicide	0	0	0	0
B Offences Against The Person	177	79.7%	45	20.3%
C Sexual Offences	11	84.6%	2	15.4%
D Burglary	57	81.4%	13	18.6%
E Robbery	2	66.7%	1	33.3%
F Theft And Handling	269	96.8%	9	3.2%
G Fraud And Forgery	13	92.9%	1	7.1%
H Criminal Damage	66	91.7%	6	8.3%
I Drugs Offences	50	98.0%	1	2.0%
J Public Order Offences	109	82.0%	24	18.0%
K All Other Offences (excluding Motoring)	58	81.7%	13	18.3%
L Motoring Offences	888	91.4%	84	8.6%
Admin Finalisations	0	0.0%	10	100.0%
TOTAL	1,700	89.1%	209	10.9%