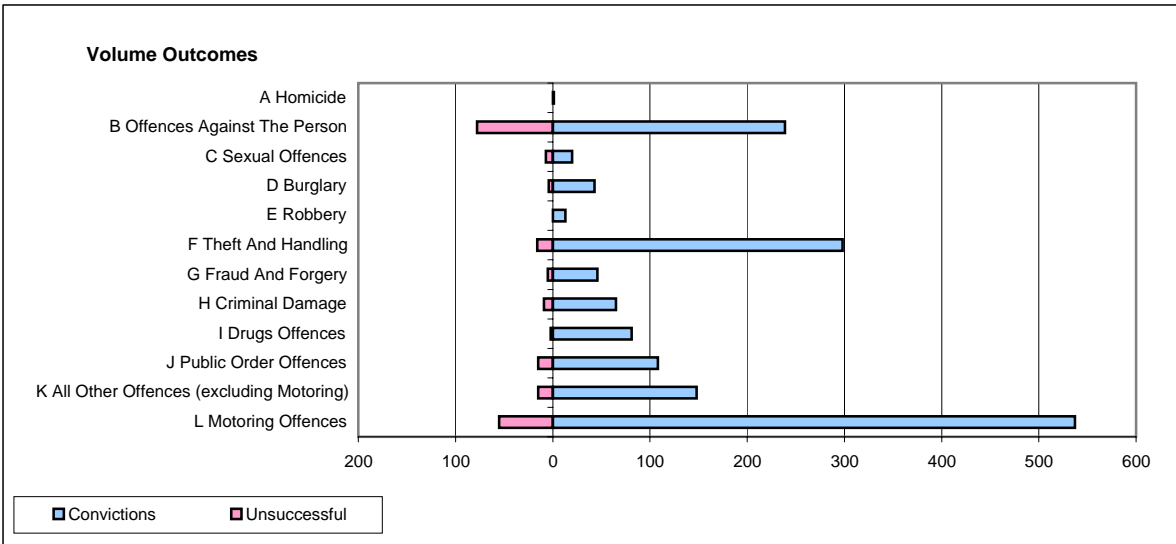
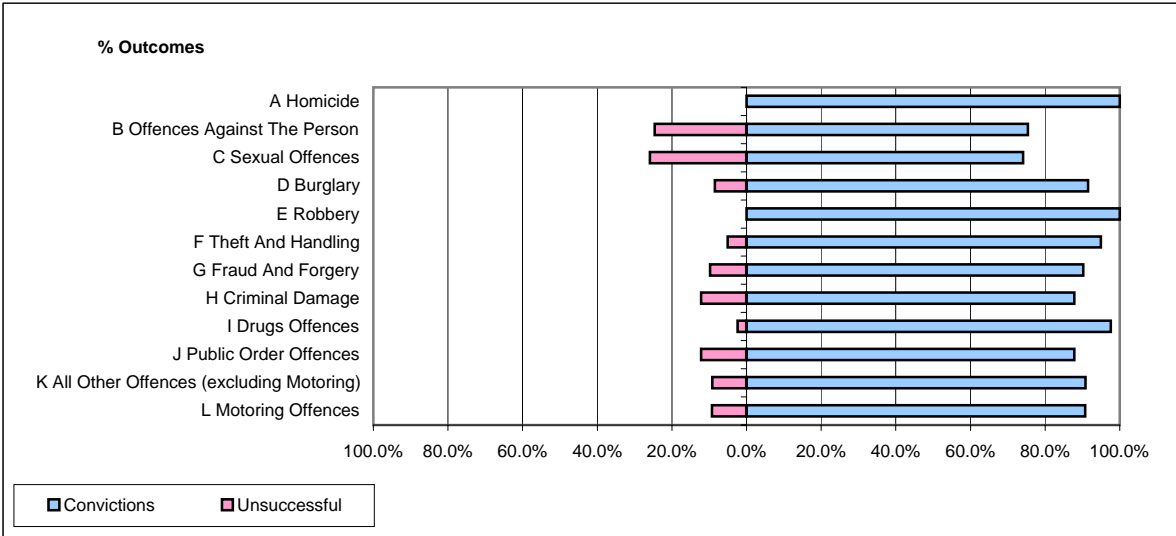


**CPS OUTCOMES BY PRINCIPAL OFFENCE CATEGORY**

**September 2008**

**P37-Sussex**



	Convictions		Unsuccessful	
	Number of Defendants	%	Number of Defendants	%
<b>A Homicide</b>	<b>1</b>	<b>100.0%</b>	<b>0</b>	<b>0.0%</b>
<b>B Offences Against The Person</b>	<b>239</b>	<b>75.4%</b>	<b>78</b>	<b>24.6%</b>
<b>C Sexual Offences</b>	<b>20</b>	<b>74.1%</b>	<b>7</b>	<b>25.9%</b>
<b>D Burglary</b>	<b>43</b>	<b>91.5%</b>	<b>4</b>	<b>8.5%</b>
<b>E Robbery</b>	<b>13</b>	<b>100.0%</b>	<b>0</b>	<b>0.0%</b>
<b>F Theft And Handling</b>	<b>298</b>	<b>94.9%</b>	<b>16</b>	<b>5.1%</b>
<b>G Fraud And Forgery</b>	<b>46</b>	<b>90.2%</b>	<b>5</b>	<b>9.8%</b>
<b>H Criminal Damage</b>	<b>65</b>	<b>87.8%</b>	<b>9</b>	<b>12.2%</b>
<b>I Drugs Offences</b>	<b>81</b>	<b>97.6%</b>	<b>2</b>	<b>2.4%</b>
<b>J Public Order Offences</b>	<b>108</b>	<b>87.8%</b>	<b>15</b>	<b>12.2%</b>
<b>K All Other Offences (excluding Motoring)</b>	<b>148</b>	<b>90.8%</b>	<b>15</b>	<b>9.2%</b>
<b>L Motoring Offences</b>	<b>537</b>	<b>90.7%</b>	<b>55</b>	<b>9.3%</b>
<b>Admin Finalisations</b>	<b>0</b>	<b>0.0%</b>	<b>38</b>	<b>100.0%</b>
<b>TOTAL</b>	<b>1,599</b>	<b>86.8%</b>	<b>244</b>	<b>13.2%</b>