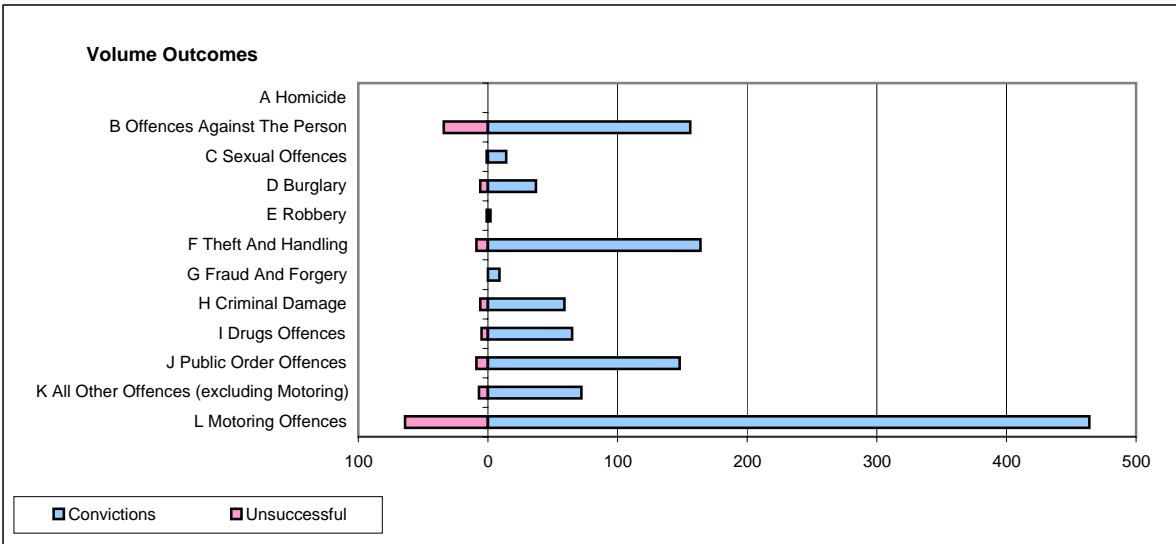
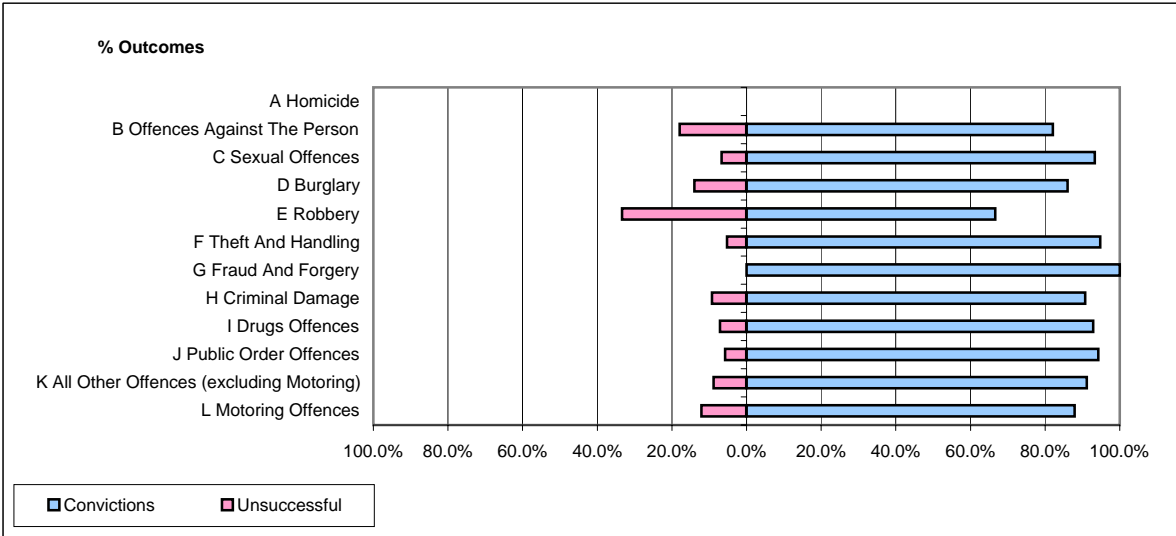


**CPS OUTCOMES BY PRINCIPAL OFFENCE CATEGORY**

**September 2008**

**P29-NorthWales**



	Convictions		Unsuccessful	
	Number of Defendants	%	Number of Defendants	%
<b>A Homicide</b>	<b>0</b>	<b>0</b>	<b>0</b>	<b>0</b>
<b>B Offences Against The Person</b>	<b>156</b>	<b>82.1%</b>	<b>34</b>	<b>17.9%</b>
<b>C Sexual Offences</b>	<b>14</b>	<b>93.3%</b>	<b>1</b>	<b>6.7%</b>
<b>D Burglary</b>	<b>37</b>	<b>86.0%</b>	<b>6</b>	<b>14.0%</b>
<b>E Robbery</b>	<b>2</b>	<b>66.7%</b>	<b>1</b>	<b>33.3%</b>
<b>F Theft And Handling</b>	<b>164</b>	<b>94.8%</b>	<b>9</b>	<b>5.2%</b>
<b>G Fraud And Forgery</b>	<b>9</b>	<b>100.0%</b>	<b>0</b>	<b>0.0%</b>
<b>H Criminal Damage</b>	<b>59</b>	<b>90.8%</b>	<b>6</b>	<b>9.2%</b>
<b>I Drugs Offences</b>	<b>65</b>	<b>92.9%</b>	<b>5</b>	<b>7.1%</b>
<b>J Public Order Offences</b>	<b>148</b>	<b>94.3%</b>	<b>9</b>	<b>5.7%</b>
<b>K All Other Offences (excluding Motoring)</b>	<b>72</b>	<b>91.1%</b>	<b>7</b>	<b>8.9%</b>
<b>L Motoring Offences</b>	<b>464</b>	<b>87.9%</b>	<b>64</b>	<b>12.1%</b>
<b>Admin Finalisations</b>	<b>0</b>	<b>0.0%</b>	<b>12</b>	<b>100.0%</b>
<b>TOTAL</b>	<b>1,190</b>	<b>88.5%</b>	<b>154</b>	<b>11.5%</b>