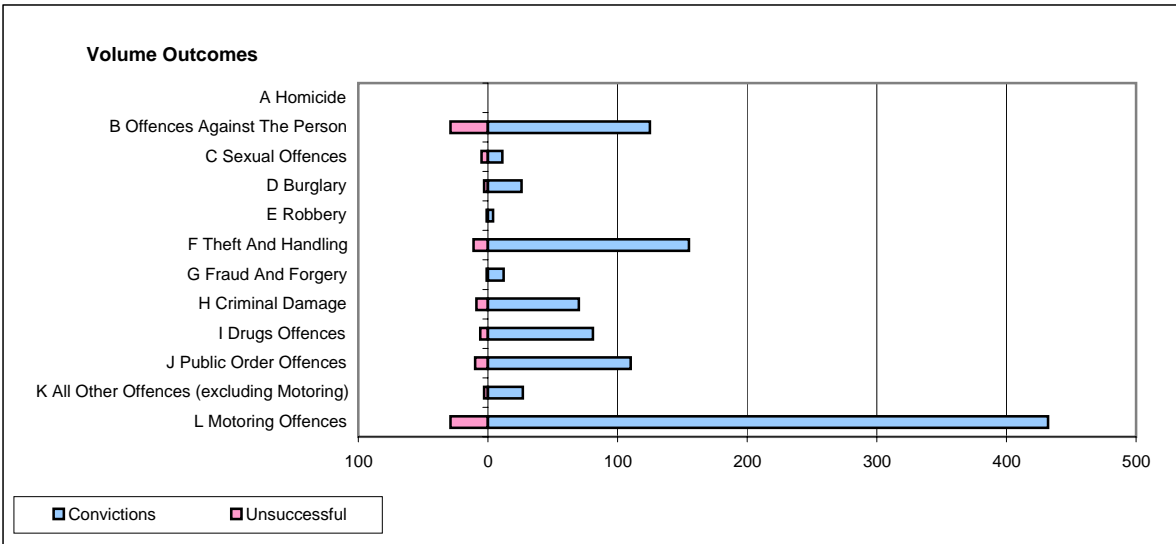
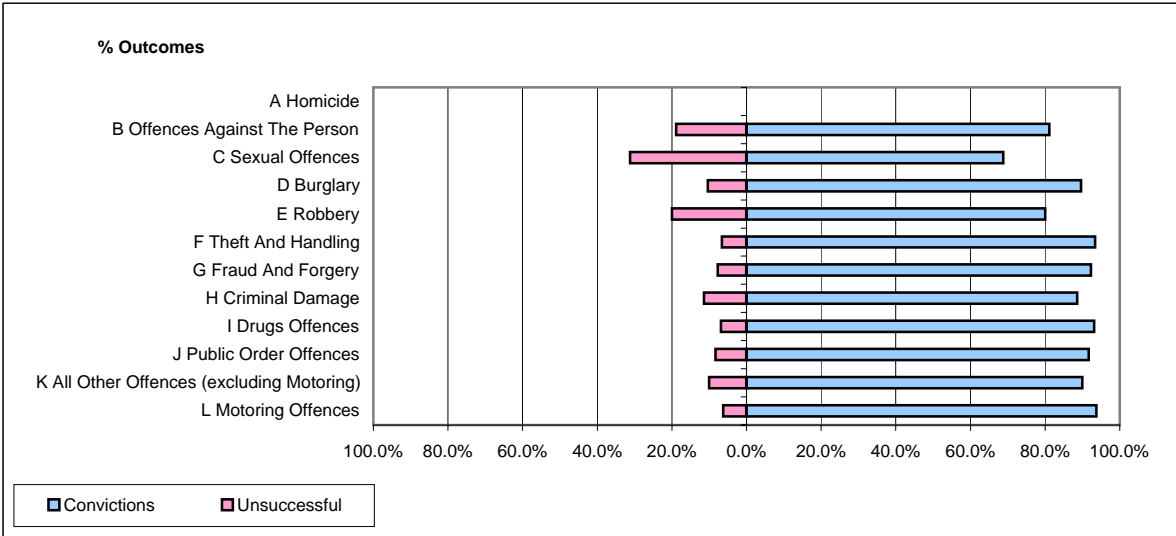


CPS OUTCOMES BY PRINCIPAL OFFENCE CATEGORY

September 2008

P26-Norfolk



	Convictions		Unsuccessful	
	Number of Defendants	%	Number of Defendants	%
A Homicide	0	0	0	0
B Offences Against The Person	125	81.2%	29	18.8%
C Sexual Offences	11	68.8%	5	31.3%
D Burglary	26	89.7%	3	10.3%
E Robbery	4	80.0%	1	20.0%
F Theft And Handling	155	93.4%	11	6.6%
G Fraud And Forgery	12	92.3%	1	7.7%
H Criminal Damage	70	88.6%	9	11.4%
I Drugs Offences	81	93.1%	6	6.9%
J Public Order Offences	110	91.7%	10	8.3%
K All Other Offences (excluding Motoring)	27	90.0%	3	10.0%
L Motoring Offences	432	93.7%	29	6.3%
Admin Finalisations	0	0.0%	19	100.0%
TOTAL	1,053	89.3%	126	10.7%