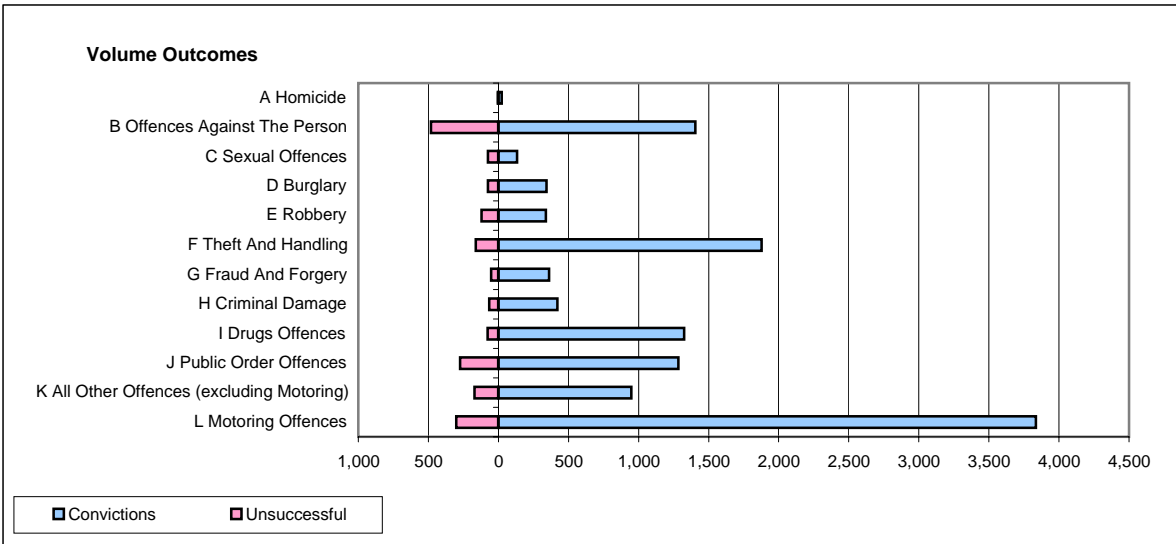
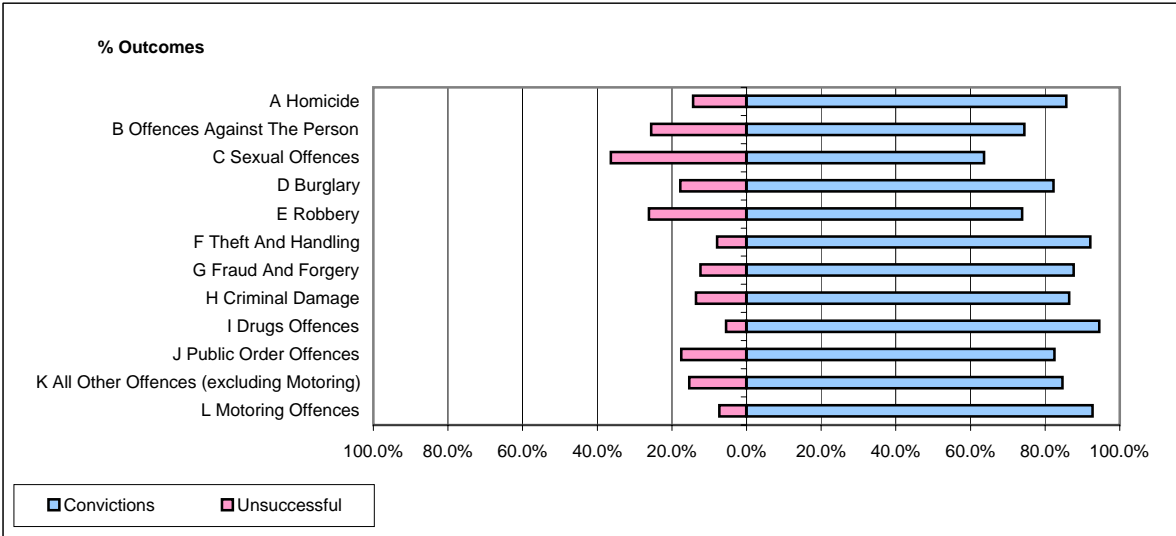


CPS OUTCOMES BY PRINCIPAL OFFENCE CATEGORY

September 2008

P25-Metropolitan&City



	Convictions		Unsuccessful	
	Number of Defendants	%	Number of Defendants	%
A Homicide	24	85.7%	4	14.3%
B Offences Against The Person	1,405	74.5%	482	25.5%
C Sexual Offences	133	63.6%	76	36.4%
D Burglary	342	82.2%	74	17.8%
E Robbery	339	73.9%	120	26.1%
F Theft And Handling	1,878	92.1%	161	7.9%
G Fraud And Forgery	361	87.6%	51	12.4%
H Criminal Damage	421	86.4%	66	13.6%
I Drugs Offences	1,326	94.5%	77	5.5%
J Public Order Offences	1,285	82.5%	273	17.5%
K All Other Offences (excluding Motoring)	948	84.6%	172	15.4%
L Motoring Offences	3,836	92.7%	300	7.3%
Admin Finalisations	0	0.0%	452	100.0%
TOTAL	12,298	84.2%	2,308	15.8%