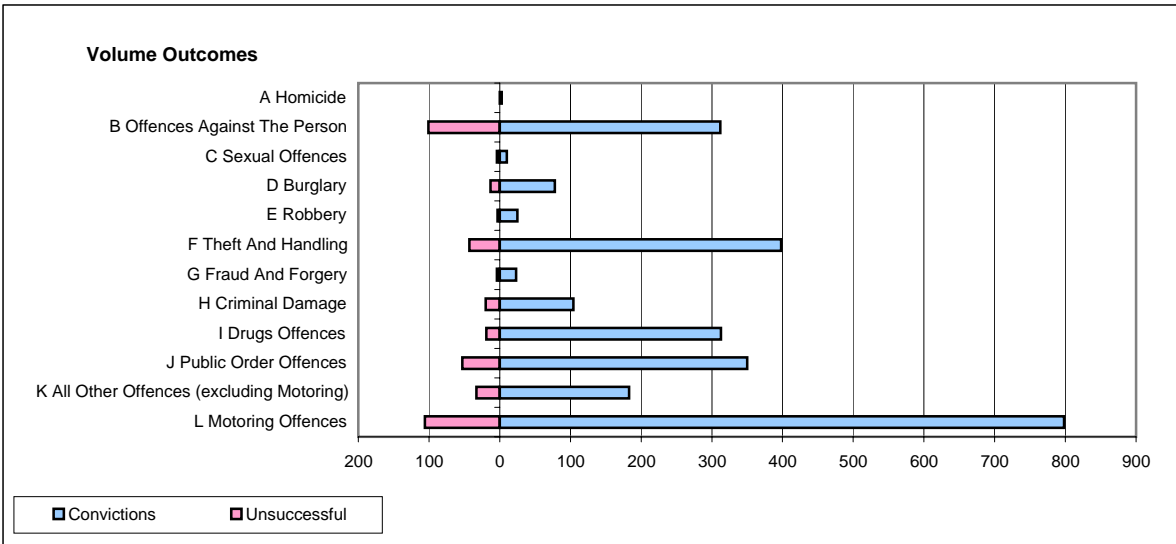
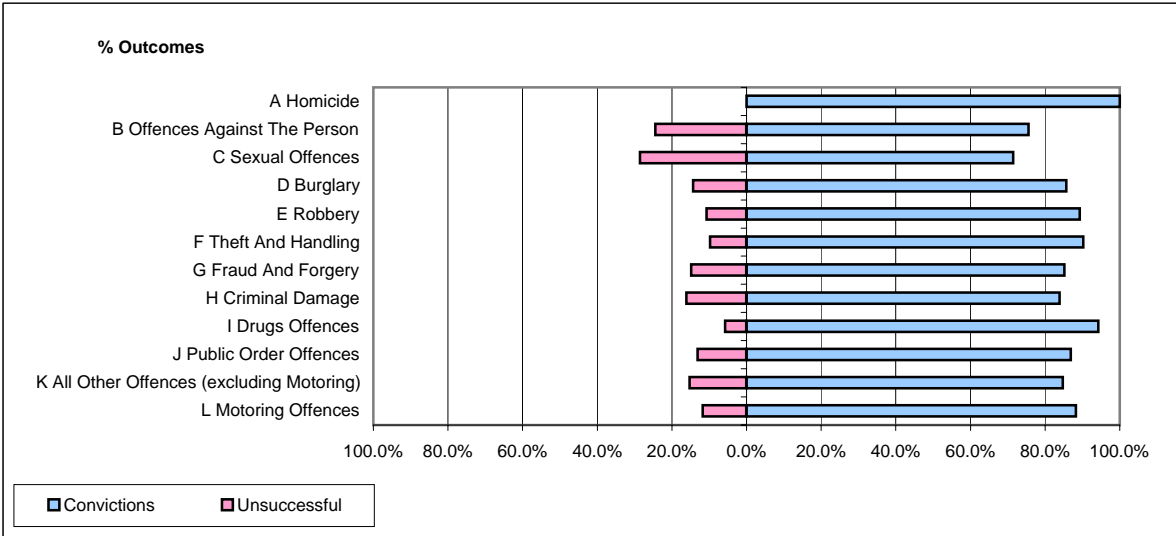


**CPS OUTCOMES BY PRINCIPAL OFFENCE CATEGORY**

**September 2008**

**P24-Merseyside**



	Convictions		Unsuccessful	
	Number of Defendants	%	Number of Defendants	%
<b>A Homicide</b>	<b>3</b>	<b>100.0%</b>	<b>0</b>	<b>0.0%</b>
<b>B Offences Against The Person</b>	<b>312</b>	<b>75.5%</b>	<b>101</b>	<b>24.5%</b>
<b>C Sexual Offences</b>	<b>10</b>	<b>71.4%</b>	<b>4</b>	<b>28.6%</b>
<b>D Burglary</b>	<b>78</b>	<b>85.7%</b>	<b>13</b>	<b>14.3%</b>
<b>E Robbery</b>	<b>25</b>	<b>89.3%</b>	<b>3</b>	<b>10.7%</b>
<b>F Theft And Handling</b>	<b>398</b>	<b>90.2%</b>	<b>43</b>	<b>9.8%</b>
<b>G Fraud And Forgery</b>	<b>23</b>	<b>85.2%</b>	<b>4</b>	<b>14.8%</b>
<b>H Criminal Damage</b>	<b>104</b>	<b>83.9%</b>	<b>20</b>	<b>16.1%</b>
<b>I Drugs Offences</b>	<b>313</b>	<b>94.3%</b>	<b>19</b>	<b>5.7%</b>
<b>J Public Order Offences</b>	<b>350</b>	<b>86.8%</b>	<b>53</b>	<b>13.2%</b>
<b>K All Other Offences (excluding Motoring)</b>	<b>183</b>	<b>84.7%</b>	<b>33</b>	<b>15.3%</b>
<b>L Motoring Offences</b>	<b>798</b>	<b>88.3%</b>	<b>106</b>	<b>11.7%</b>
<b>Admin Finalisations</b>	<b>0</b>	<b>0.0%</b>	<b>34</b>	<b>100.0%</b>
<b>TOTAL</b>	<b>2,597</b>	<b>85.7%</b>	<b>433</b>	<b>14.3%</b>