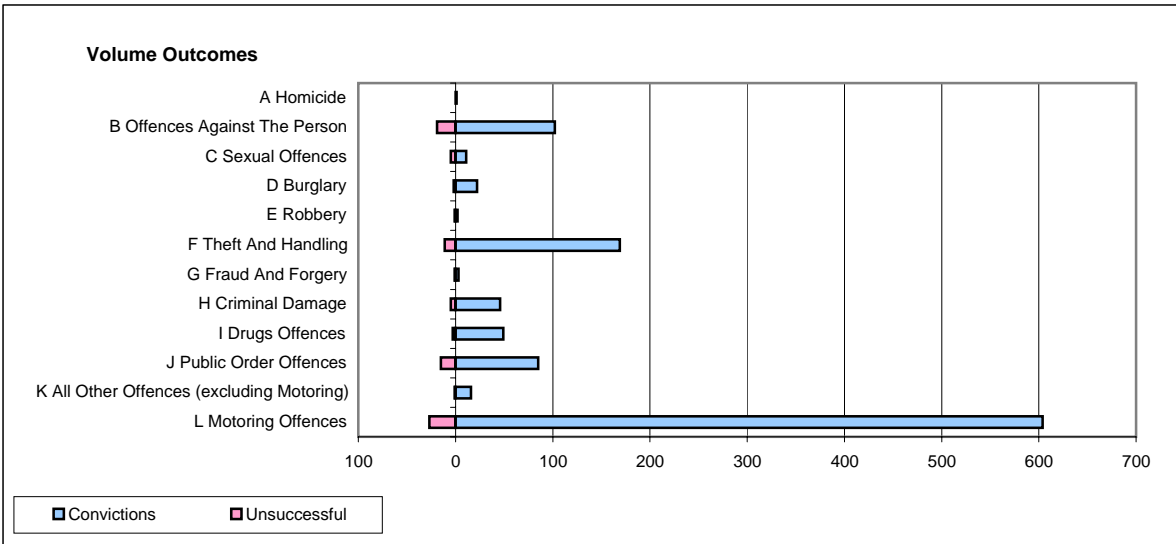
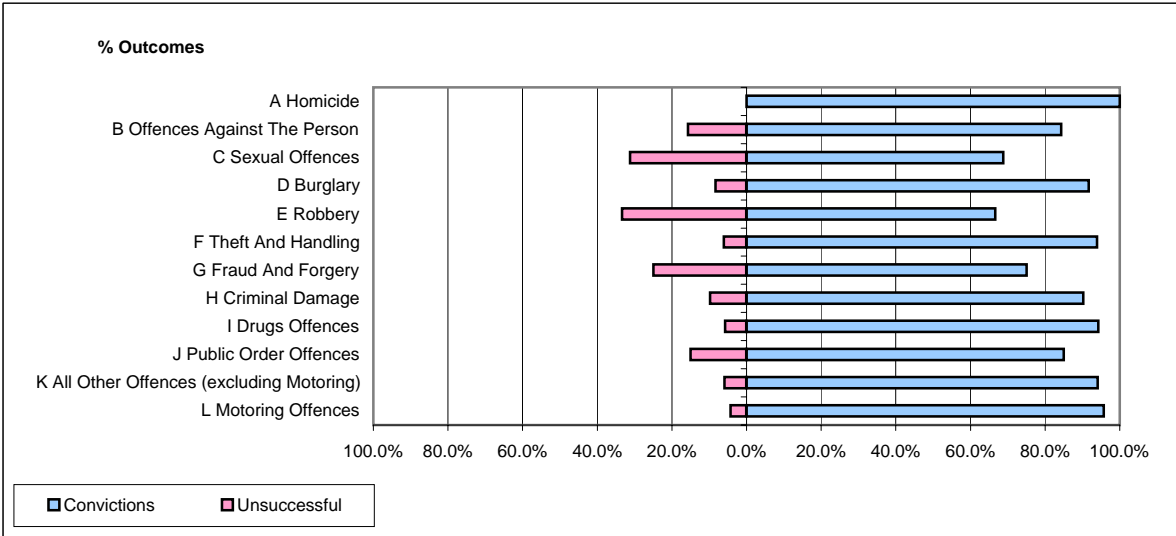


CPS OUTCOMES BY PRINCIPAL OFFENCE CATEGORY

September 2008

P23-Lincolnshire



	Convictions		Unsuccessful	
	Number of Defendants	%	Number of Defendants	%
A Homicide	1	100.0%	0	0.0%
B Offences Against The Person	102	84.3%	19	15.7%
C Sexual Offences	11	68.8%	5	31.3%
D Burglary	22	91.7%	2	8.3%
E Robbery	2	66.7%	1	33.3%
F Theft And Handling	169	93.9%	11	6.1%
G Fraud And Forgery	3	75.0%	1	25.0%
H Criminal Damage	46	90.2%	5	9.8%
I Drugs Offences	49	94.2%	3	5.8%
J Public Order Offences	85	85.0%	15	15.0%
K All Other Offences (excluding Motoring)	16	94.1%	1	5.9%
L Motoring Offences	604	95.7%	27	4.3%
Admin Finalisations	0	0.0%	9	100.0%
TOTAL	1,110	91.8%	99	8.2%