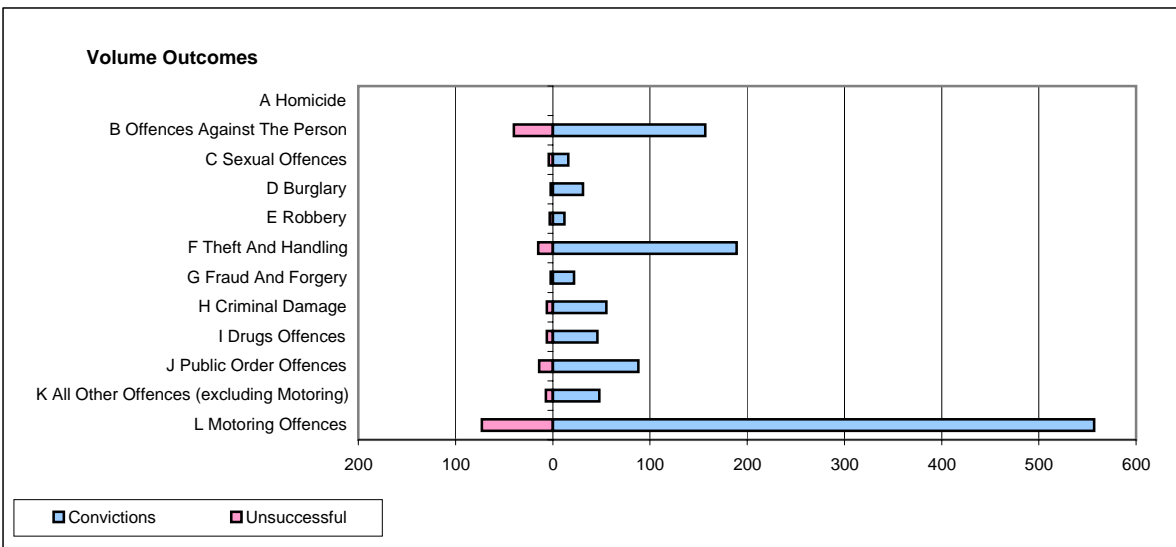
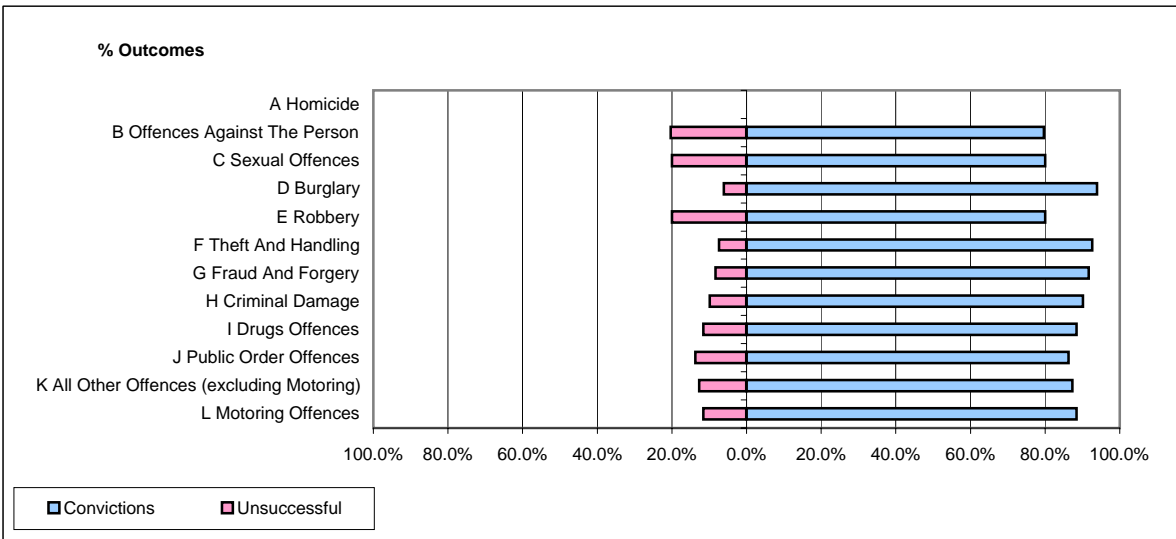


CPS OUTCOMES BY PRINCIPAL OFFENCE CATEGORY

September 2008

P22-Leicestershire



	Convictions		Unsuccessful	
	Number of Defendants	%	Number of Defendants	%
A Homicide	0	0	0	0
B Offences Against The Person	157	79.7%	40	20.3%
C Sexual Offences	16	80.0%	4	20.0%
D Burglary	31	93.9%	2	6.1%
E Robbery	12	80.0%	3	20.0%
F Theft And Handling	189	92.6%	15	7.4%
G Fraud And Forgery	22	91.7%	2	8.3%
H Criminal Damage	55	90.2%	6	9.8%
I Drugs Offences	46	88.5%	6	11.5%
J Public Order Offences	88	86.3%	14	13.7%
K All Other Offences (excluding Motoring)	48	87.3%	7	12.7%
L Motoring Offences	557	88.4%	73	11.6%
Admin Finalisations	0	0.0%	16	100.0%
TOTAL	1,221	86.7%	188	13.3%