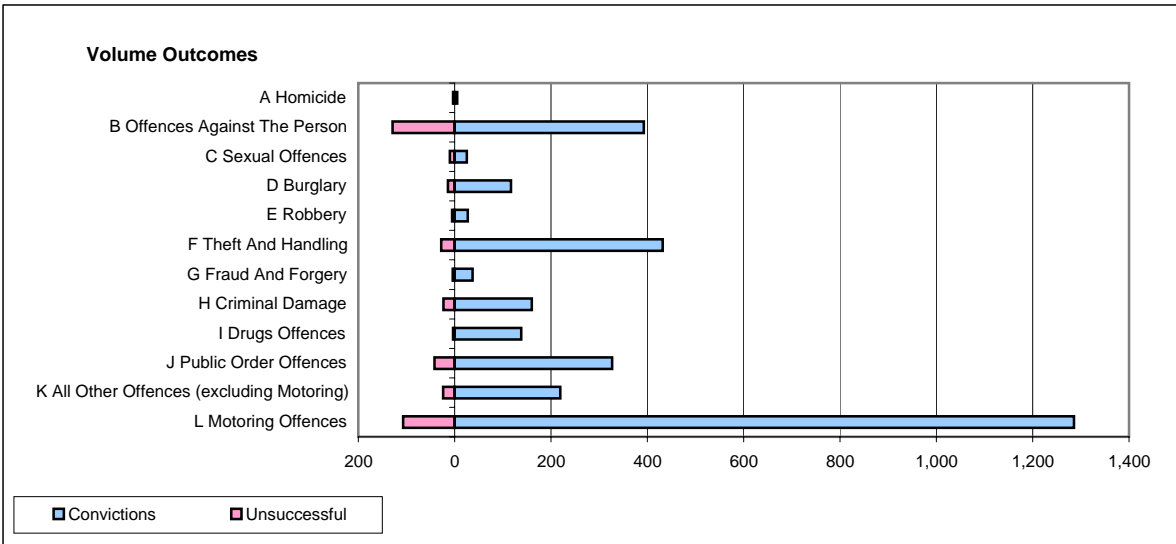
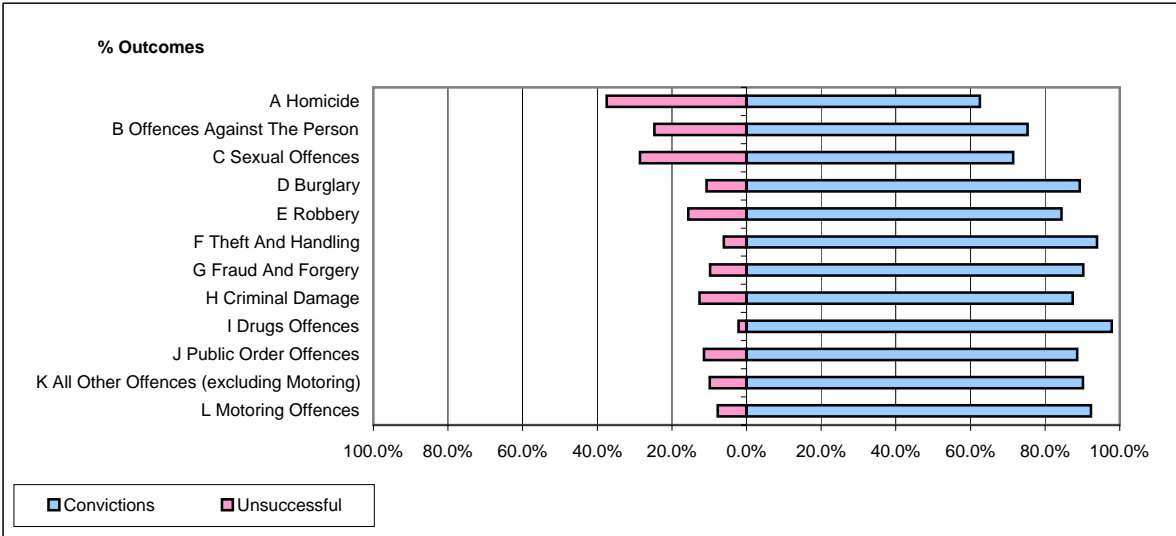


**CPS OUTCOMES BY PRINCIPAL OFFENCE CATEGORY**

**September 2008**

**P21-Lancashire**



	Convictions		Unsuccessful	
	Number of Defendants	%	Number of Defendants	%
<b>A Homicide</b>	<b>5</b>	<b>62.5%</b>	<b>3</b>	<b>37.5%</b>
<b>B Offences Against The Person</b>	<b>393</b>	<b>75.3%</b>	<b>129</b>	<b>24.7%</b>
<b>C Sexual Offences</b>	<b>25</b>	<b>71.4%</b>	<b>10</b>	<b>28.6%</b>
<b>D Burglary</b>	<b>117</b>	<b>89.3%</b>	<b>14</b>	<b>10.7%</b>
<b>E Robbery</b>	<b>27</b>	<b>84.4%</b>	<b>5</b>	<b>15.6%</b>
<b>F Theft And Handling</b>	<b>432</b>	<b>93.9%</b>	<b>28</b>	<b>6.1%</b>
<b>G Fraud And Forgery</b>	<b>37</b>	<b>90.2%</b>	<b>4</b>	<b>9.8%</b>
<b>H Criminal Damage</b>	<b>160</b>	<b>87.4%</b>	<b>23</b>	<b>12.6%</b>
<b>I Drugs Offences</b>	<b>138</b>	<b>97.9%</b>	<b>3</b>	<b>2.1%</b>
<b>J Public Order Offences</b>	<b>327</b>	<b>88.6%</b>	<b>42</b>	<b>11.4%</b>
<b>K All Other Offences (excluding Motoring)</b>	<b>219</b>	<b>90.1%</b>	<b>24</b>	<b>9.9%</b>
<b>L Motoring Offences</b>	<b>1,286</b>	<b>92.3%</b>	<b>107</b>	<b>7.7%</b>
<b>Admin Finalisations</b>	<b>0</b>	<b>0.0%</b>	<b>42</b>	<b>100.0%</b>
<b>TOTAL</b>	<b>3,166</b>	<b>87.9%</b>	<b>434</b>	<b>12.1%</b>