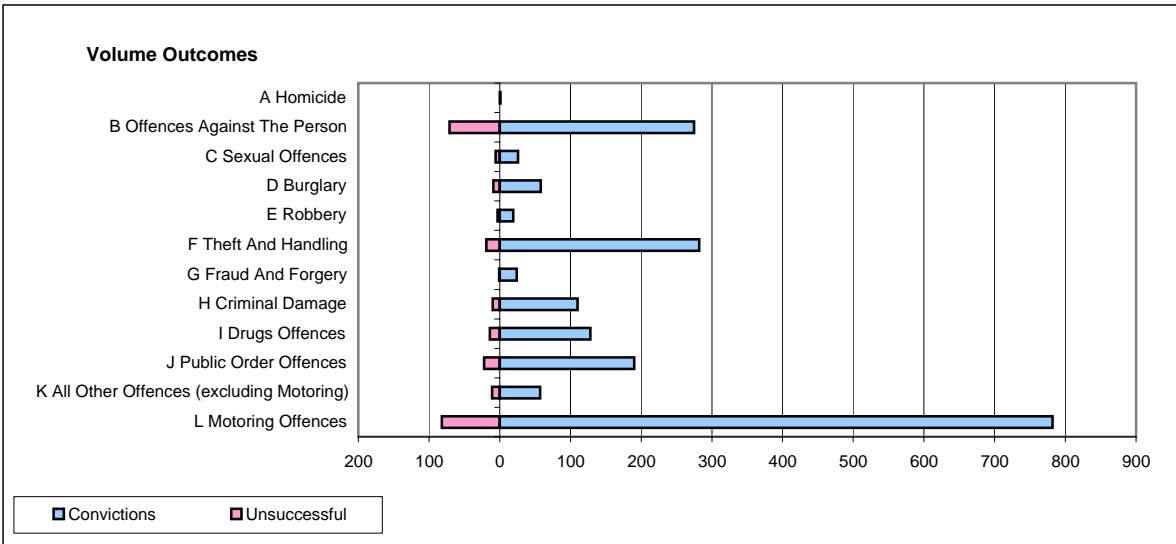
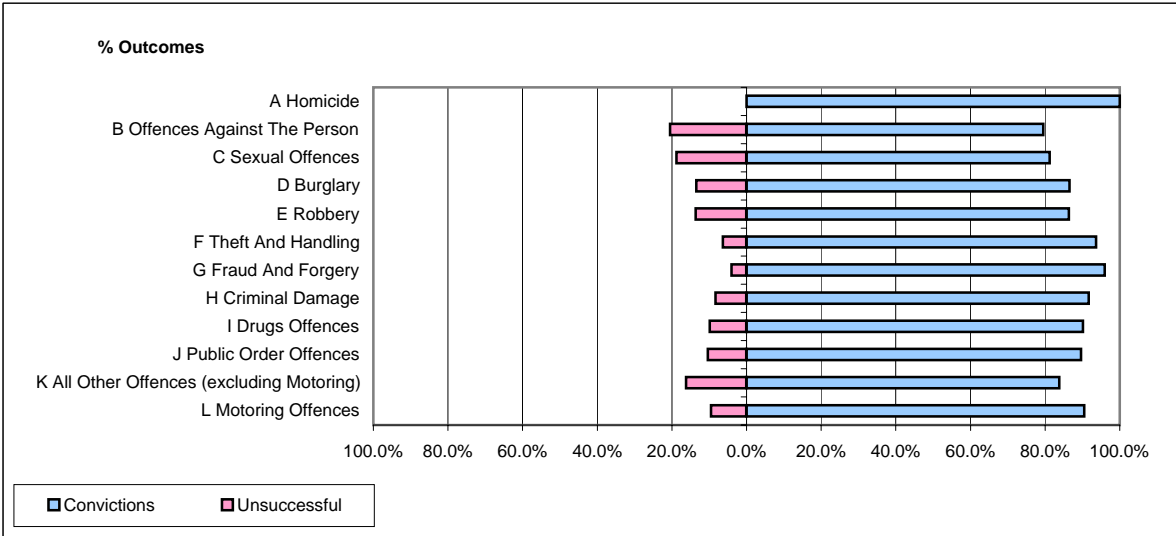


CPS OUTCOMES BY PRINCIPAL OFFENCE CATEGORY

September 2008

P20-Kent



	Convictions		Unsuccessful	
	Number of Defendants	%	Number of Defendants	%
A Homicide	1	100.0%	0	0.0%
B Offences Against The Person	275	79.5%	71	20.5%
C Sexual Offences	26	81.3%	6	18.8%
D Burglary	58	86.6%	9	13.4%
E Robbery	19	86.4%	3	13.6%
F Theft And Handling	282	93.7%	19	6.3%
G Fraud And Forgery	24	96.0%	1	4.0%
H Criminal Damage	110	91.7%	10	8.3%
I Drugs Offences	128	90.1%	14	9.9%
J Public Order Offences	190	89.6%	22	10.4%
K All Other Offences (excluding Motoring)	57	83.8%	11	16.2%
L Motoring Offences	782	90.5%	82	9.5%
Admin Finalisations	0	0.0%	36	100.0%
TOTAL	1,952	87.3%	284	12.7%