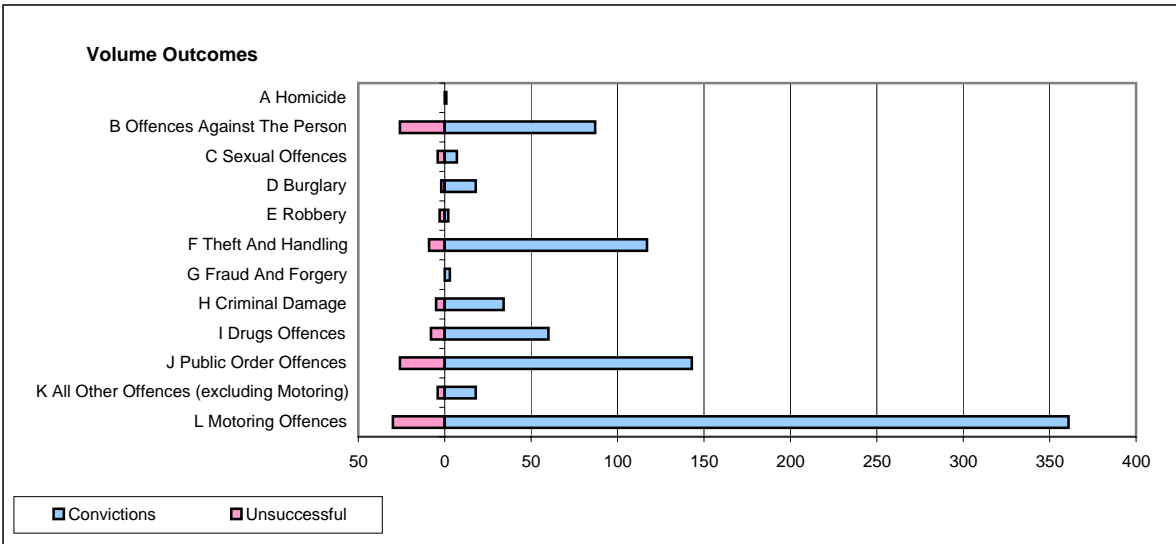
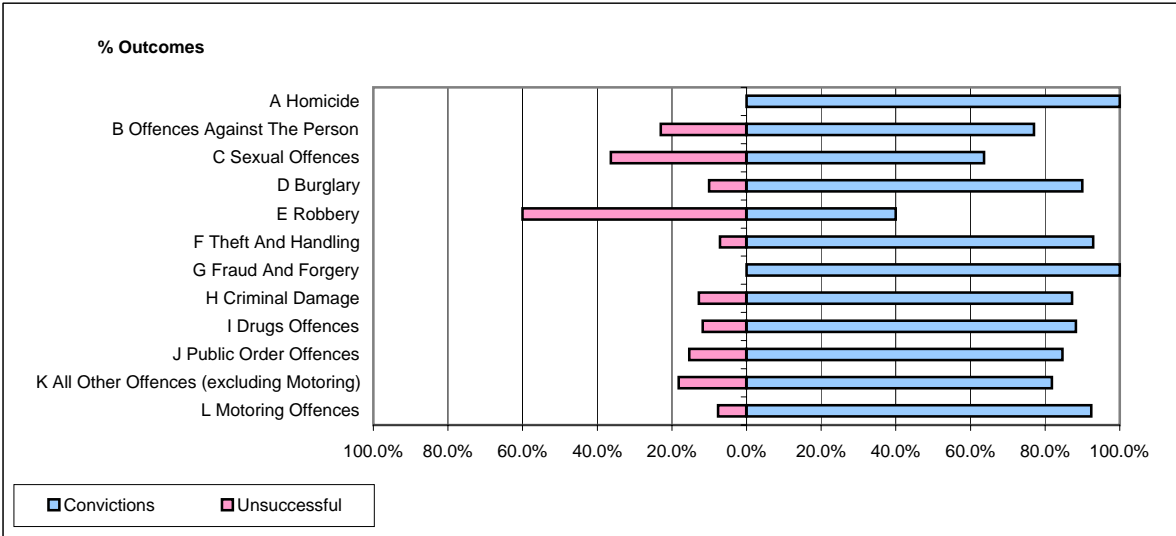


**CPS OUTCOMES BY PRINCIPAL OFFENCE CATEGORY**

**September 2008**

**P16-Gwent**



	Convictions		Unsuccessful	
	Number of Defendants	%	Number of Defendants	%
<b>A Homicide</b>	<b>1</b>	<b>100.0%</b>	<b>0</b>	<b>0.0%</b>
<b>B Offences Against The Person</b>	<b>87</b>	<b>77.0%</b>	<b>26</b>	<b>23.0%</b>
<b>C Sexual Offences</b>	<b>7</b>	<b>63.6%</b>	<b>4</b>	<b>36.4%</b>
<b>D Burglary</b>	<b>18</b>	<b>90.0%</b>	<b>2</b>	<b>10.0%</b>
<b>E Robbery</b>	<b>2</b>	<b>40.0%</b>	<b>3</b>	<b>60.0%</b>
<b>F Theft And Handling</b>	<b>117</b>	<b>92.9%</b>	<b>9</b>	<b>7.1%</b>
<b>G Fraud And Forgery</b>	<b>3</b>	<b>100.0%</b>	<b>0</b>	<b>0.0%</b>
<b>H Criminal Damage</b>	<b>34</b>	<b>87.2%</b>	<b>5</b>	<b>12.8%</b>
<b>I Drugs Offences</b>	<b>60</b>	<b>88.2%</b>	<b>8</b>	<b>11.8%</b>
<b>J Public Order Offences</b>	<b>143</b>	<b>84.6%</b>	<b>26</b>	<b>15.4%</b>
<b>K All Other Offences (excluding Motoring)</b>	<b>18</b>	<b>81.8%</b>	<b>4</b>	<b>18.2%</b>
<b>L Motoring Offences</b>	<b>361</b>	<b>92.3%</b>	<b>30</b>	<b>7.7%</b>
<b>Admin Finalisations</b>	<b>0</b>	<b>0.0%</b>	<b>4</b>	<b>100.0%</b>
<b>TOTAL</b>	<b>851</b>	<b>87.6%</b>	<b>121</b>	<b>12.4%</b>