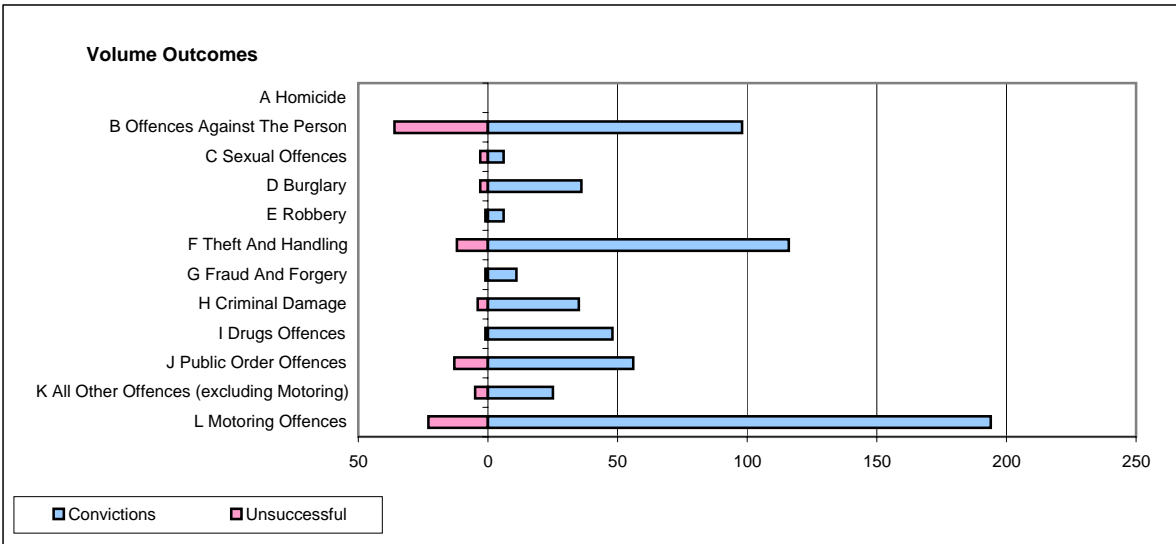
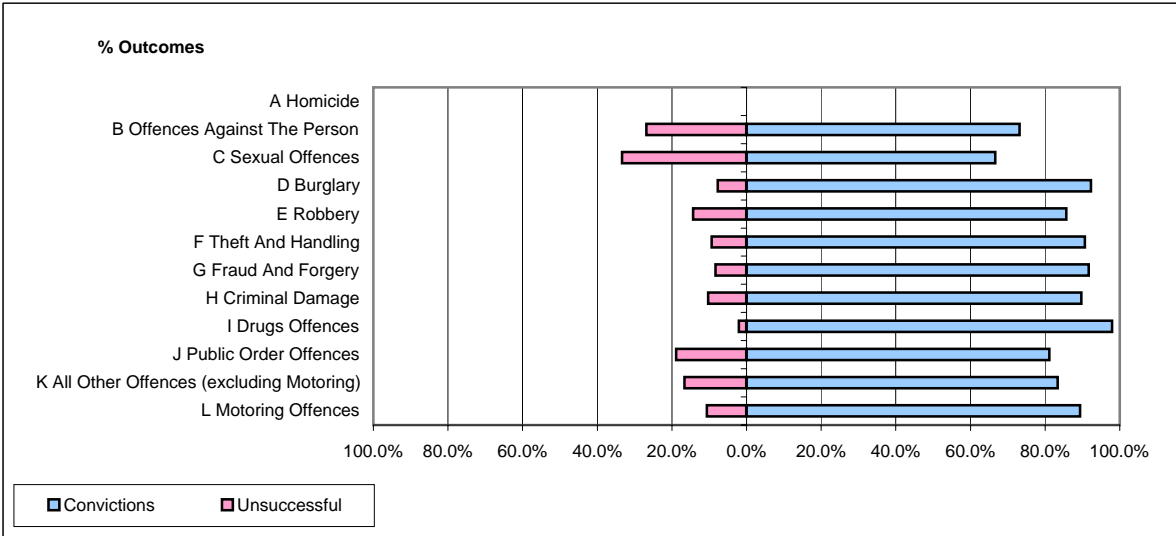


CPS OUTCOMES BY PRINCIPAL OFFENCE CATEGORY

September 2008

P14-Gloucestershire



	Convictions		Unsuccessful	
	Number of Defendants	%	Number of Defendants	%
A Homicide	0	0	0	0
B Offences Against The Person	98	73.1%	36	26.9%
C Sexual Offences	6	66.7%	3	33.3%
D Burglary	36	92.3%	3	7.7%
E Robbery	6	85.7%	1	14.3%
F Theft And Handling	116	90.6%	12	9.4%
G Fraud And Forgery	11	91.7%	1	8.3%
H Criminal Damage	35	89.7%	4	10.3%
I Drugs Offences	48	98.0%	1	2.0%
J Public Order Offences	56	81.2%	13	18.8%
K All Other Offences (excluding Motoring)	25	83.3%	5	16.7%
L Motoring Offences	194	89.4%	23	10.6%
Admin Finalisations	0	0.0%	5	100.0%
TOTAL	631	85.5%	107	14.5%