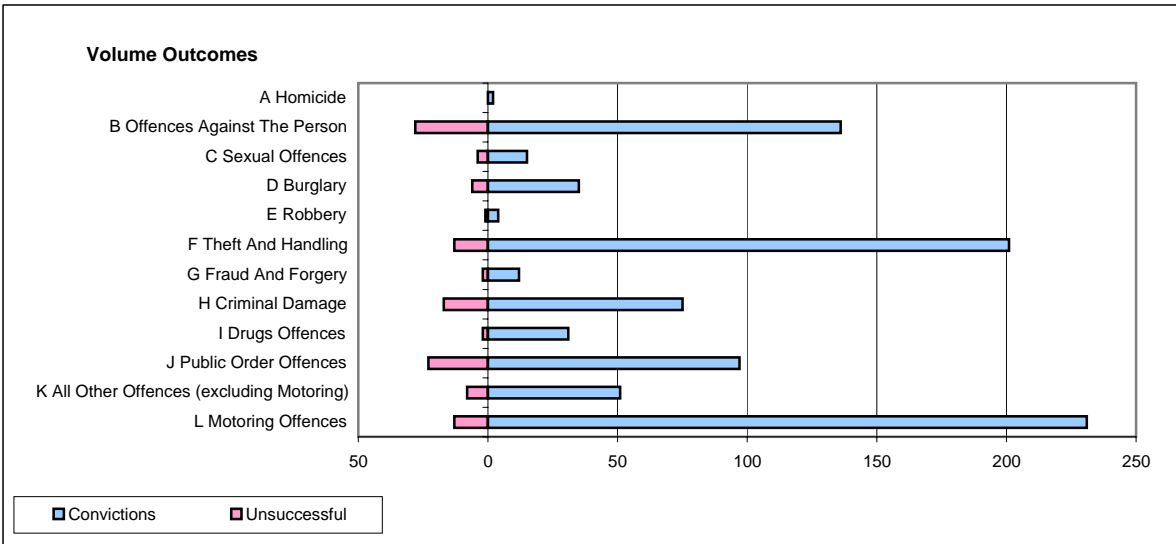
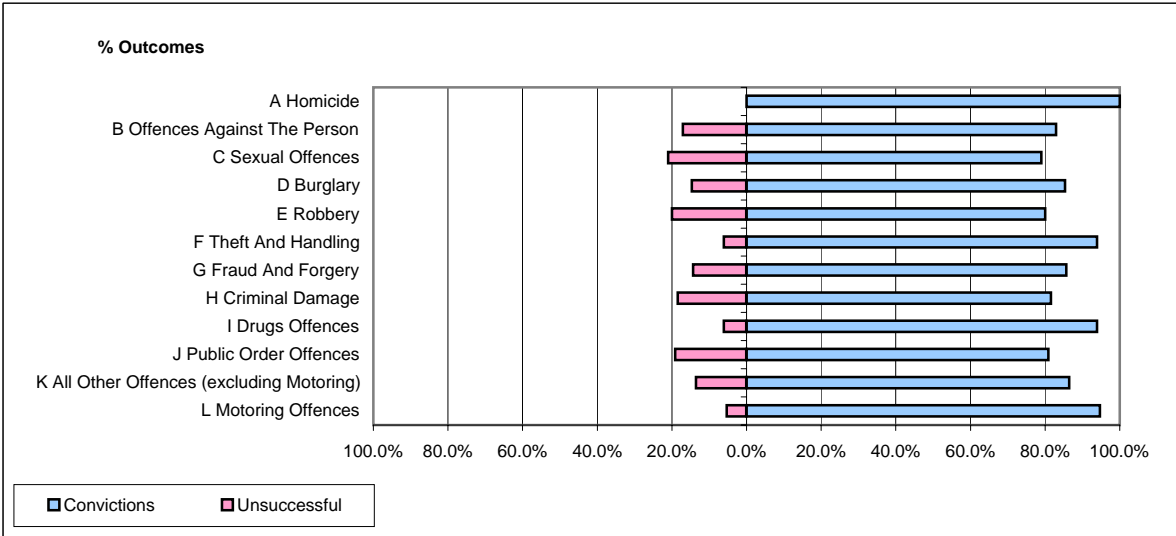


CPS OUTCOMES BY PRINCIPAL OFFENCE CATEGORY

September 2008

P11-Durham



	Convictions		Unsuccessful	
	Number of Defendants	%	Number of Defendants	%
A Homicide	2	100.0%	0	0.0%
B Offences Against The Person	136	82.9%	28	17.1%
C Sexual Offences	15	78.9%	4	21.1%
D Burglary	35	85.4%	6	14.6%
E Robbery	4	80.0%	1	20.0%
F Theft And Handling	201	93.9%	13	6.1%
G Fraud And Forgery	12	85.7%	2	14.3%
H Criminal Damage	75	81.5%	17	18.5%
I Drugs Offences	31	93.9%	2	6.1%
J Public Order Offences	97	80.8%	23	19.2%
K All Other Offences (excluding Motoring)	51	86.4%	8	13.6%
L Motoring Offences	231	94.7%	13	5.3%
Admin Finalisations	0	0.0%	9	100.0%
TOTAL	890	87.6%	126	12.4%