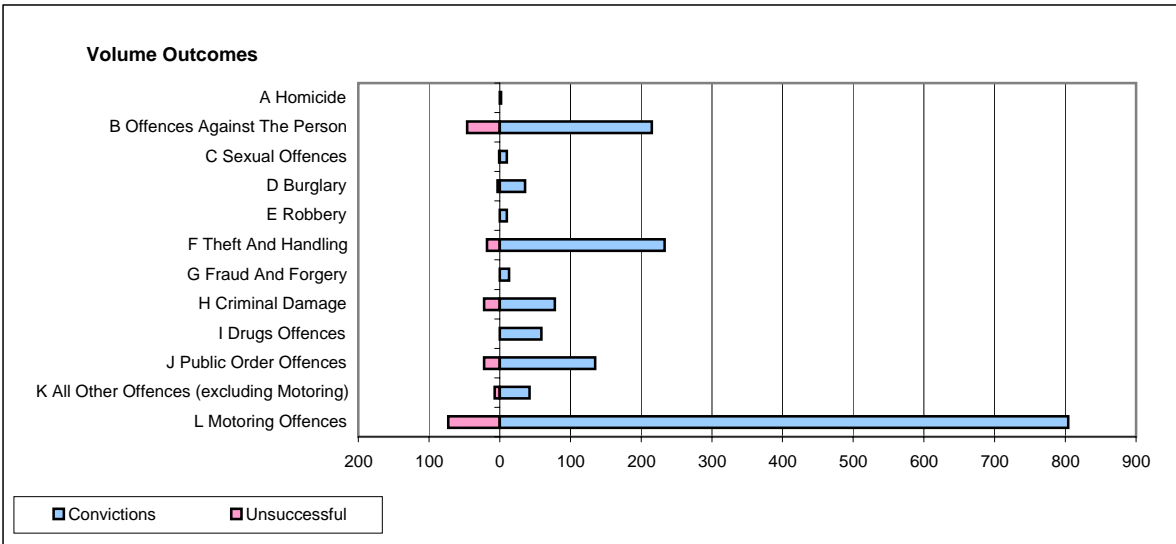
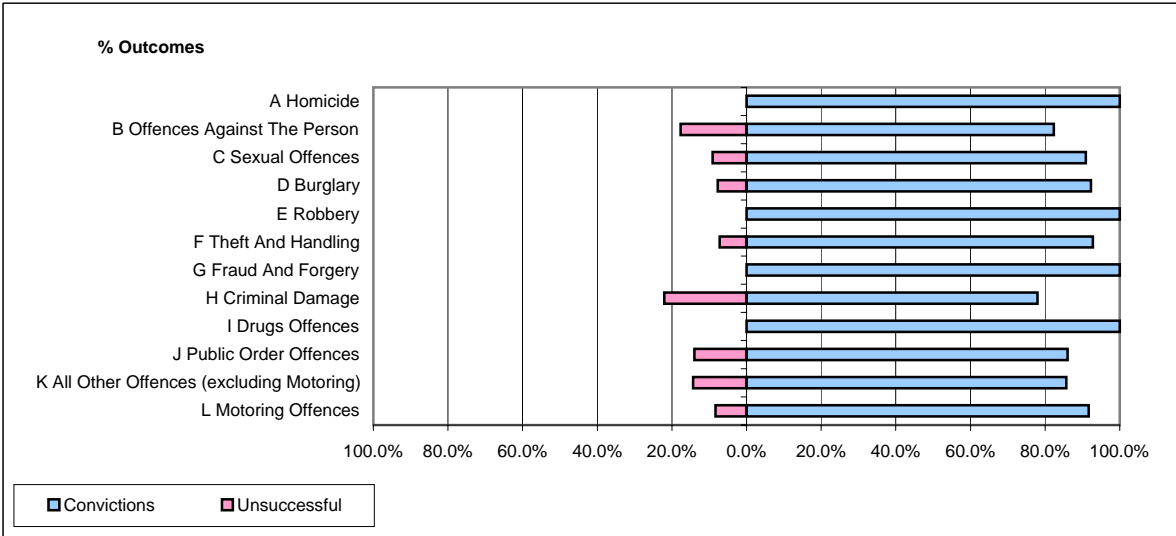


**CPS OUTCOMES BY PRINCIPAL OFFENCE CATEGORY**

**September 2008**

**P04-Cheshire**



	Convictions		Unsuccessful	
	Number of Defendants	%	Number of Defendants	%
<b>A Homicide</b>	<b>2</b>	<b>100.0%</b>	<b>0</b>	<b>0.0%</b>
<b>B Offences Against The Person</b>	<b>215</b>	<b>82.4%</b>	<b>46</b>	<b>17.6%</b>
<b>C Sexual Offences</b>	<b>10</b>	<b>90.9%</b>	<b>1</b>	<b>9.1%</b>
<b>D Burglary</b>	<b>36</b>	<b>92.3%</b>	<b>3</b>	<b>7.7%</b>
<b>E Robbery</b>	<b>10</b>	<b>100.0%</b>	<b>0</b>	<b>0.0%</b>
<b>F Theft And Handling</b>	<b>233</b>	<b>92.8%</b>	<b>18</b>	<b>7.2%</b>
<b>G Fraud And Forgery</b>	<b>13</b>	<b>100.0%</b>	<b>0</b>	<b>0.0%</b>
<b>H Criminal Damage</b>	<b>78</b>	<b>78.0%</b>	<b>22</b>	<b>22.0%</b>
<b>I Drugs Offences</b>	<b>59</b>	<b>100.0%</b>	<b>0</b>	<b>0.0%</b>
<b>J Public Order Offences</b>	<b>135</b>	<b>86.0%</b>	<b>22</b>	<b>14.0%</b>
<b>K All Other Offences (excluding Motoring)</b>	<b>42</b>	<b>85.7%</b>	<b>7</b>	<b>14.3%</b>
<b>L Motoring Offences</b>	<b>804</b>	<b>91.7%</b>	<b>73</b>	<b>8.3%</b>
<b>Admin Finalisations</b>	<b>0</b>	<b>0.0%</b>	<b>12</b>	<b>100.0%</b>
<b>TOTAL</b>	<b>1,637</b>	<b>88.9%</b>	<b>204</b>	<b>11.1%</b>