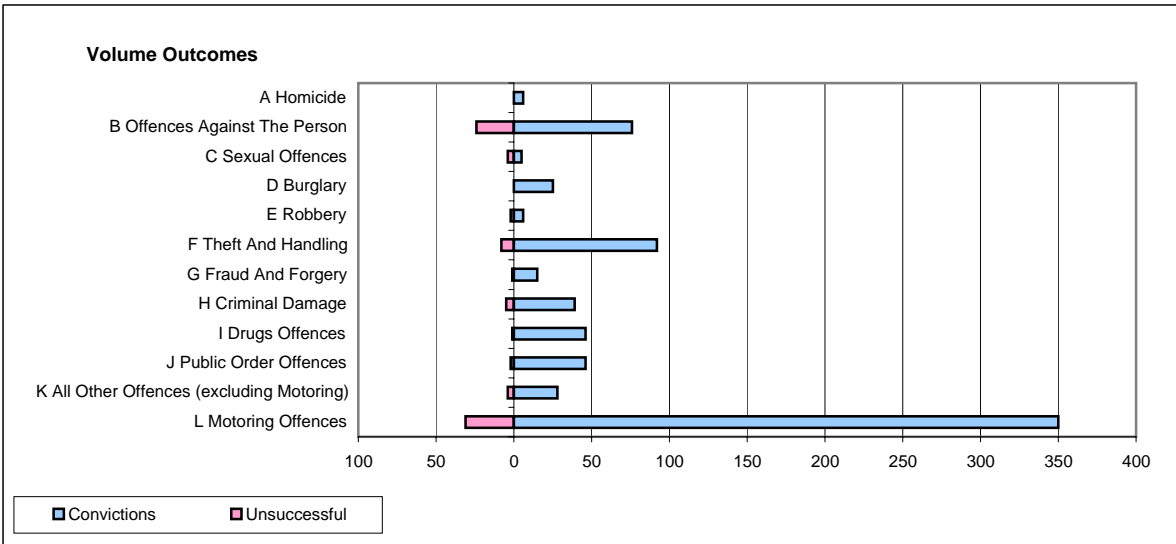
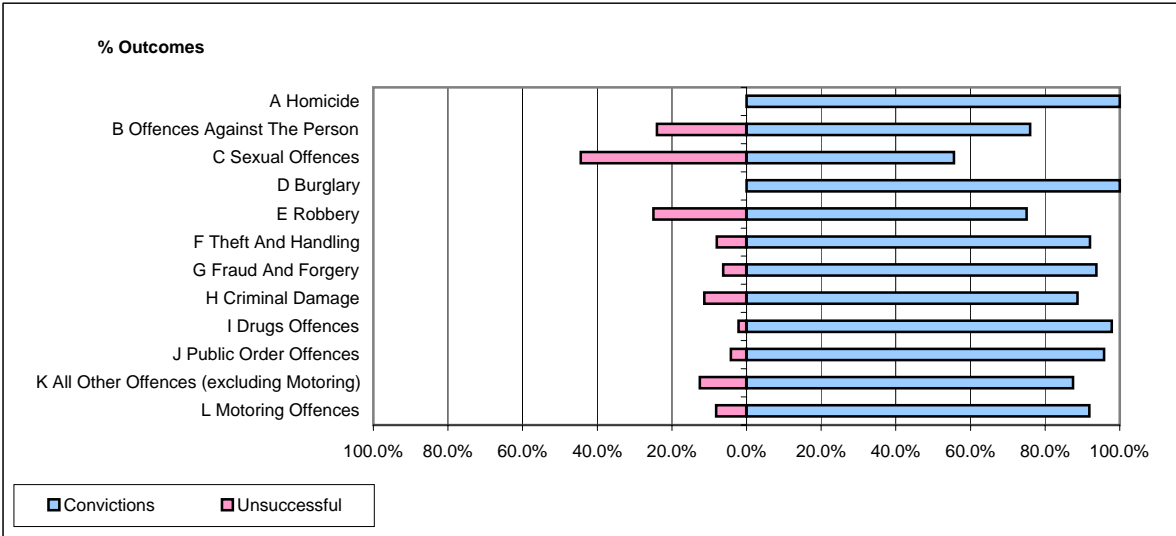


CPS OUTCOMES BY PRINCIPAL OFFENCE CATEGORY

September 2008

P02-Bedfordshire



	Convictions		Unsuccessful	
	Number of Defendants	%	Number of Defendants	%
A Homicide	6	100.0%	0	0.0%
B Offences Against The Person	76	76.0%	24	24.0%
C Sexual Offences	5	55.6%	4	44.4%
D Burglary	25	100.0%	0	0.0%
E Robbery	6	75.0%	2	25.0%
F Theft And Handling	92	92.0%	8	8.0%
G Fraud And Forgery	15	93.8%	1	6.3%
H Criminal Damage	39	88.6%	5	11.4%
I Drugs Offences	46	97.9%	1	2.1%
J Public Order Offences	46	95.8%	2	4.2%
K All Other Offences (excluding Motoring)	28	87.5%	4	12.5%
L Motoring Offences	350	91.9%	31	8.1%
Admin Finalisations	0	0.0%	8	100.0%
TOTAL	734	89.1%	90	10.9%