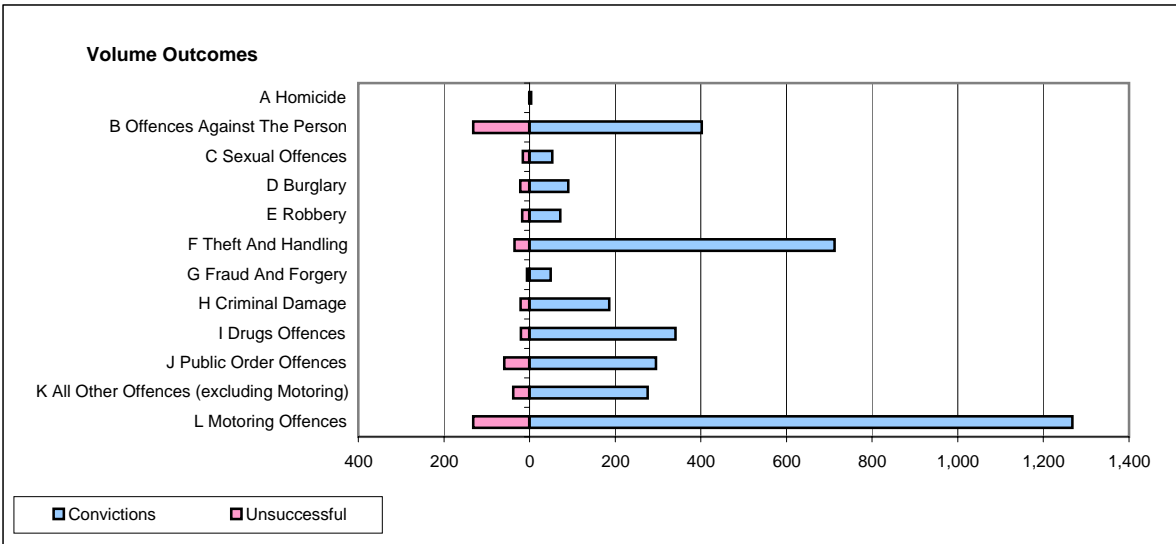
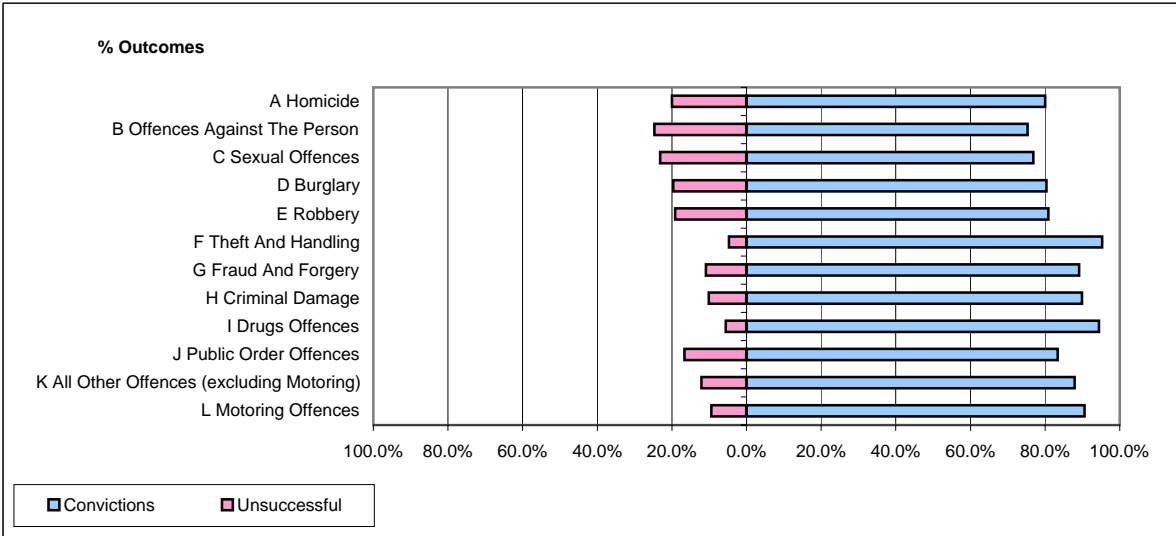


CPS OUTCOMES BY PRINCIPAL OFFENCE CATEGORY

August 2008

P41-WestMidlands



	Convictions		Unsuccessful	
	Number of Defendants	%	Number of Defendants	%
A Homicide	4	80.0%	1	20.0%
B Offences Against The Person	402	75.3%	132	24.7%
C Sexual Offences	53	76.8%	16	23.2%
D Burglary	90	80.4%	22	19.6%
E Robbery	72	80.9%	17	19.1%
F Theft And Handling	712	95.3%	35	4.7%
G Fraud And Forgery	49	89.1%	6	10.9%
H Criminal Damage	186	89.9%	21	10.1%
I Drugs Offences	341	94.5%	20	5.5%
J Public Order Offences	295	83.3%	59	16.7%
K All Other Offences (excluding Motoring)	276	87.9%	38	12.1%
L Motoring Offences	1,268	90.6%	132	9.4%
Admin Finalisations	0	0.0%	39	100.0%
TOTAL	3,748	87.4%	538	12.6%