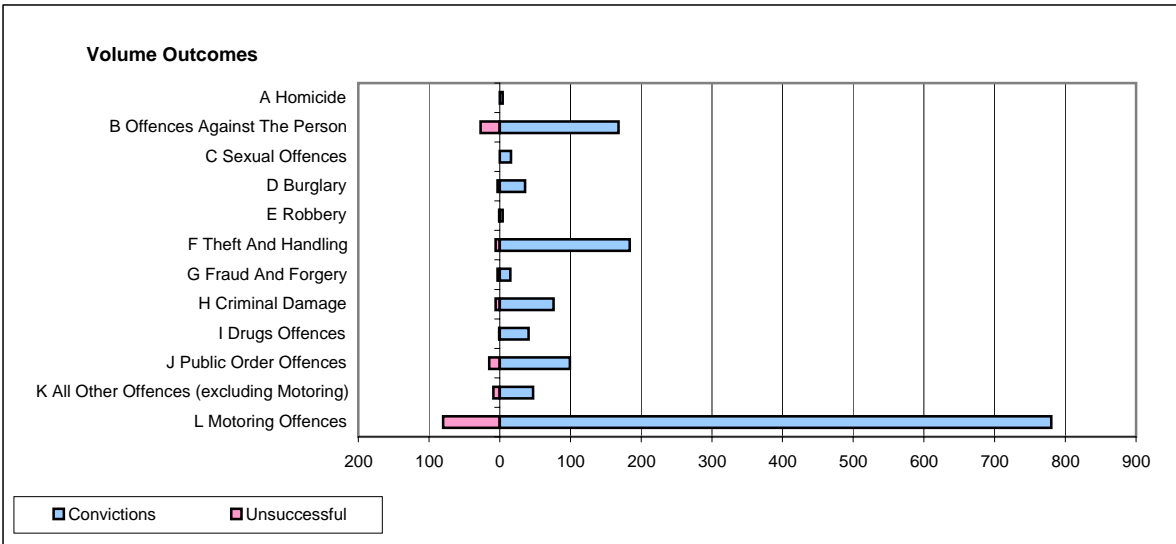
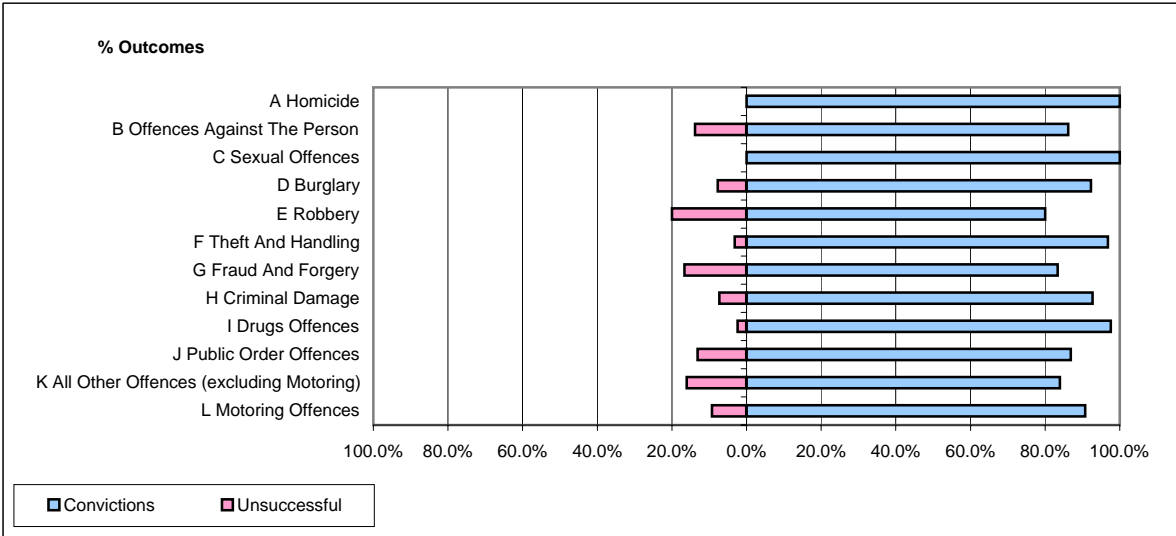


CPS OUTCOMES BY PRINCIPAL OFFENCE CATEGORY

August 2008

P40-WestMercia



	Convictions		Unsuccessful	
	Number of Defendants	%	Number of Defendants	%
A Homicide	4	100.0%	0	0.0%
B Offences Against The Person	168	86.2%	27	13.8%
C Sexual Offences	16	100.0%	0	0.0%
D Burglary	36	92.3%	3	7.7%
E Robbery	4	80.0%	1	20.0%
F Theft And Handling	184	96.8%	6	3.2%
G Fraud And Forgery	15	83.3%	3	16.7%
H Criminal Damage	76	92.7%	6	7.3%
I Drugs Offences	41	97.6%	1	2.4%
J Public Order Offences	99	86.8%	15	13.2%
K All Other Offences (excluding Motoring)	47	83.9%	9	16.1%
L Motoring Offences	780	90.7%	80	9.3%
Admin Finalisations	0	0.0%	11	100.0%
TOTAL	1,470	90.1%	162	9.9%