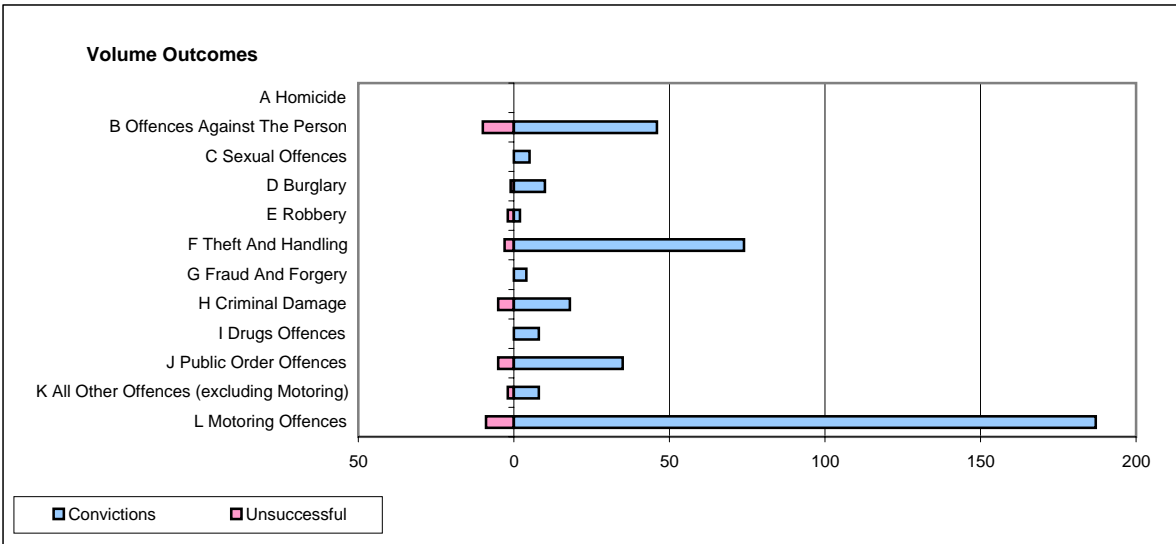
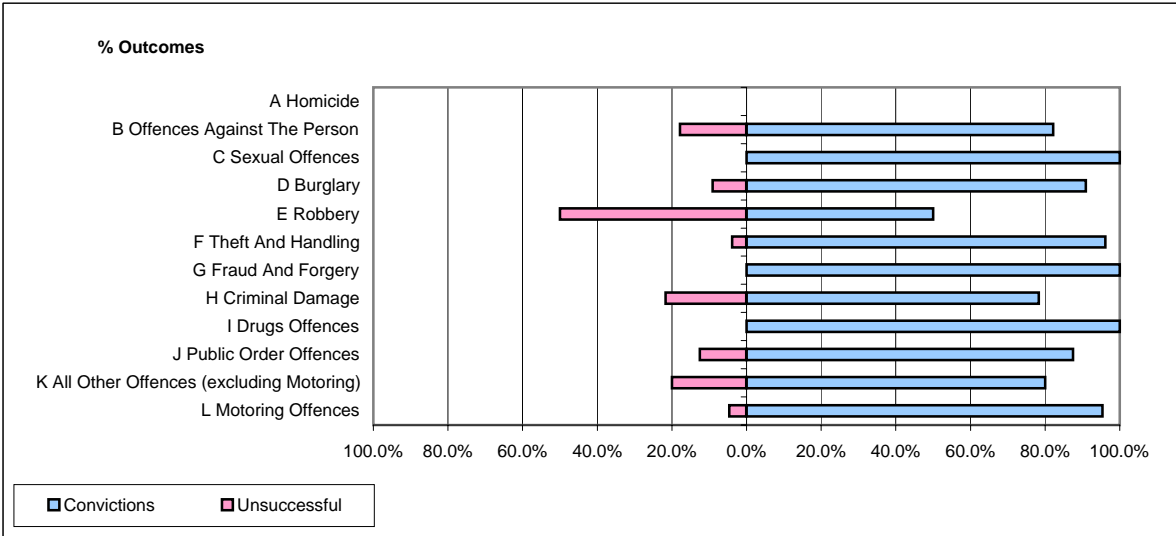


CPS OUTCOMES BY PRINCIPAL OFFENCE CATEGORY

August 2008

P39-Warwickshire



	Convictions		Unsuccessful	
	Number of Defendants	%	Number of Defendants	%
A Homicide	0	0	0	0
B Offences Against The Person	46	82.1%	10	17.9%
C Sexual Offences	5	100.0%	0	0.0%
D Burglary	10	90.9%	1	9.1%
E Robbery	2	50.0%	2	50.0%
F Theft And Handling	74	96.1%	3	3.9%
G Fraud And Forgery	4	100.0%	0	0.0%
H Criminal Damage	18	78.3%	5	21.7%
I Drugs Offences	8	100.0%	0	0.0%
J Public Order Offences	35	87.5%	5	12.5%
K All Other Offences (excluding Motoring)	8	80.0%	2	20.0%
L Motoring Offences	187	95.4%	9	4.6%
Admin Finalisations	0	0.0%	6	100.0%
TOTAL	397	90.2%	43	9.8%