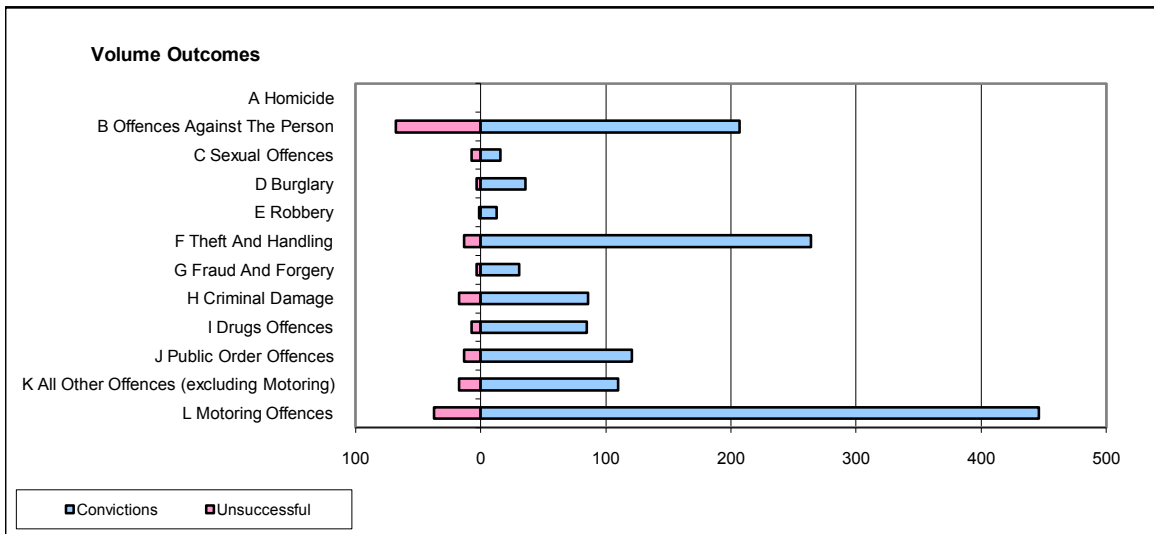
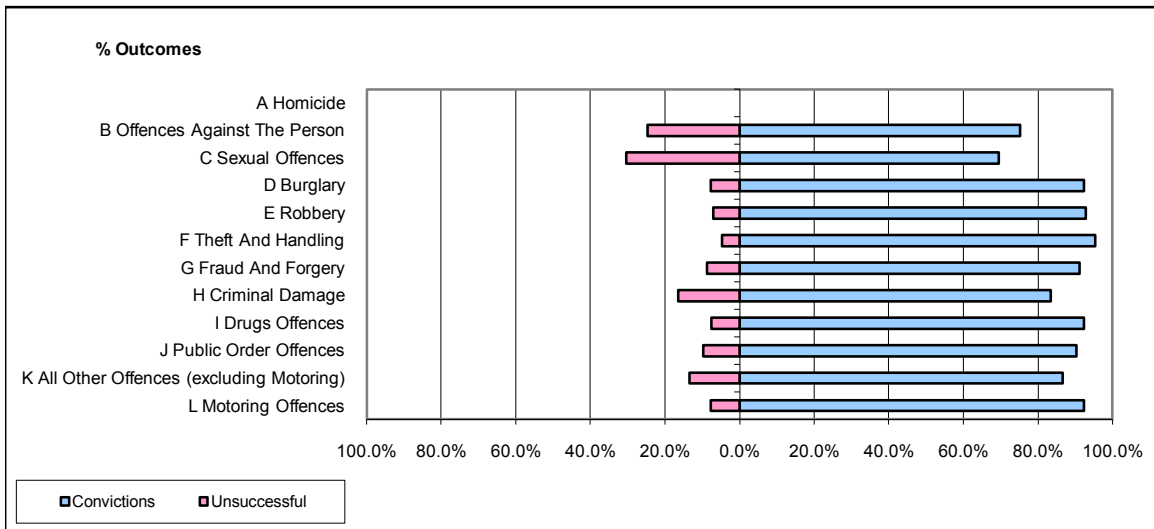


CPS OUTCOMES BY PRINCIPAL OFFENCE CATEGORY

August 2008

P37-Sussex



	Convictions		Unsuccessful	
	Number of Defendants	%	Number of Defendants	%
A Homicide	0	0	0	0
B Offences Against The Person	207	75.3%	68	24.7%
C Sexual Offences	16	69.6%	7	30.4%
D Burglary	36	92.3%	3	7.7%
E Robbery	13	92.9%	1	7.1%
F Theft And Handling	264	95.3%	13	4.7%
G Fraud And Forgery	31	91.2%	3	8.8%
H Criminal Damage	86	83.5%	17	16.5%
I Drugs Offences	85	92.4%	7	7.6%
J Public Order Offences	121	90.3%	13	9.7%
K All Other Offences (excluding Motoring)	110	86.6%	17	13.4%
L Motoring Offences	446	92.3%	37	7.7%
Admin Finalisations	0	0.0%	44	100.0%
TOTAL	1,415	86.0%	230	14.0%