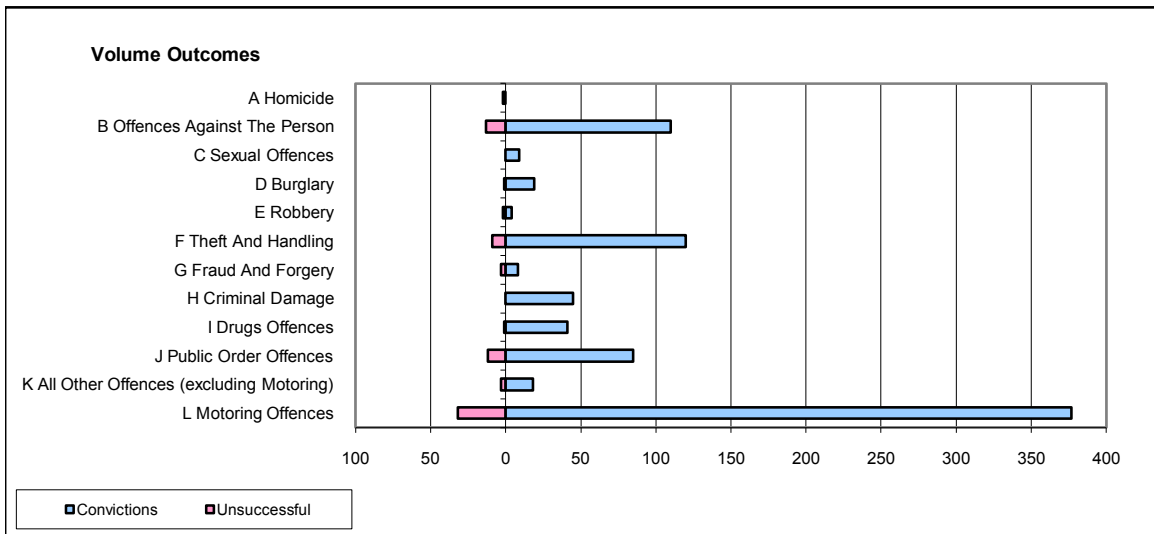
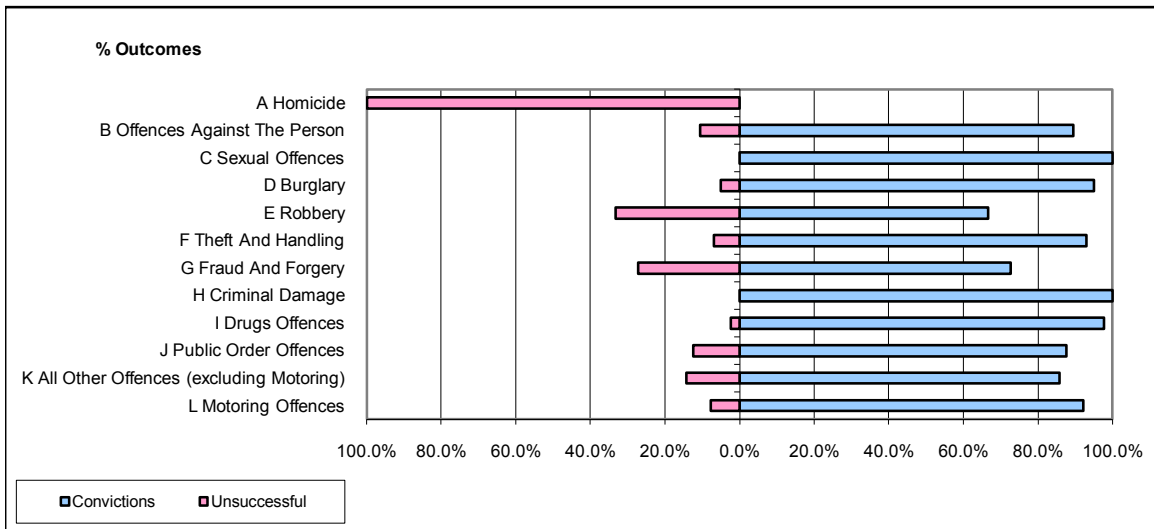


CPS OUTCOMES BY PRINCIPAL OFFENCE CATEGORY

August 2008

P35-Suffolk



	Convictions		Unsuccessful	
	Number of Defendants	%	Number of Defendants	%
A Homicide	0	0.0%	2	100.0%
B Offences Against The Person	110	89.4%	13	10.6%
C Sexual Offences	9	100.0%	0	0.0%
D Burglary	19	95.0%	1	5.0%
E Robbery	4	66.7%	2	33.3%
F Theft And Handling	120	93.0%	9	7.0%
G Fraud And Forgery	8	72.7%	3	27.3%
H Criminal Damage	45	100.0%	0	0.0%
I Drugs Offences	41	97.6%	1	2.4%
J Public Order Offences	85	87.6%	12	12.4%
K All Other Offences (excluding Motoring)	18	85.7%	3	14.3%
L Motoring Offences	377	92.2%	32	7.8%
Admin Finalisations	0	0.0%	16	100.0%
TOTAL	836	89.9%	94	10.1%