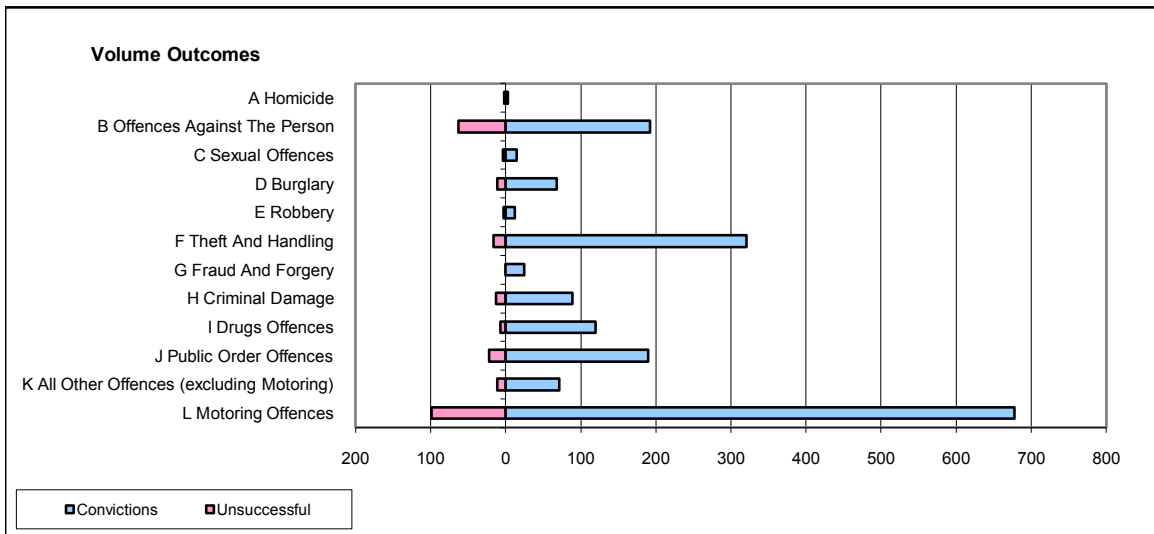
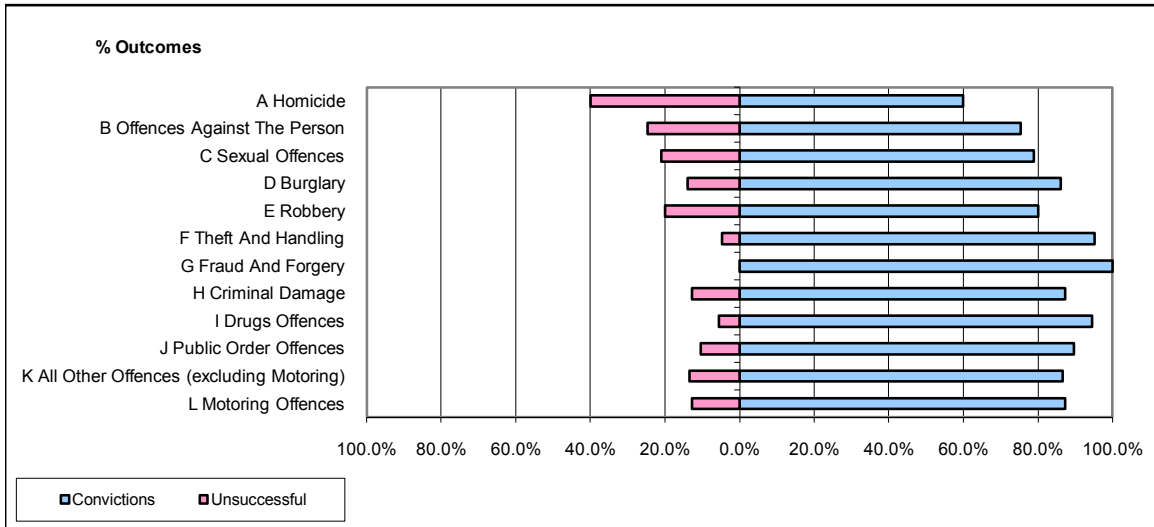


CPS OUTCOMES BY PRINCIPAL OFFENCE CATEGORY

August 2008

P32-SouthWales



	Convictions		Unsuccessful	
	Number of Defendants	%	Number of Defendants	%
A Homicide	3	60.0%	2	40.0%
B Offences Against The Person	192	75.3%	63	24.7%
C Sexual Offences	15	78.9%	4	21.1%
D Burglary	68	86.1%	11	13.9%
E Robbery	12	80.0%	3	20.0%
F Theft And Handling	321	95.3%	16	4.7%
G Fraud And Forgery	25	100.0%	0	0.0%
H Criminal Damage	89	87.3%	13	12.7%
I Drugs Offences	120	94.5%	7	5.5%
J Public Order Offences	190	89.6%	22	10.4%
K All Other Offences (excluding Motoring)	71	86.6%	11	13.4%
L Motoring Offences	678	87.3%	99	12.7%
Admin Finalisations	0	0.0%	56	100.0%
TOTAL	1,784	85.3%	307	14.7%