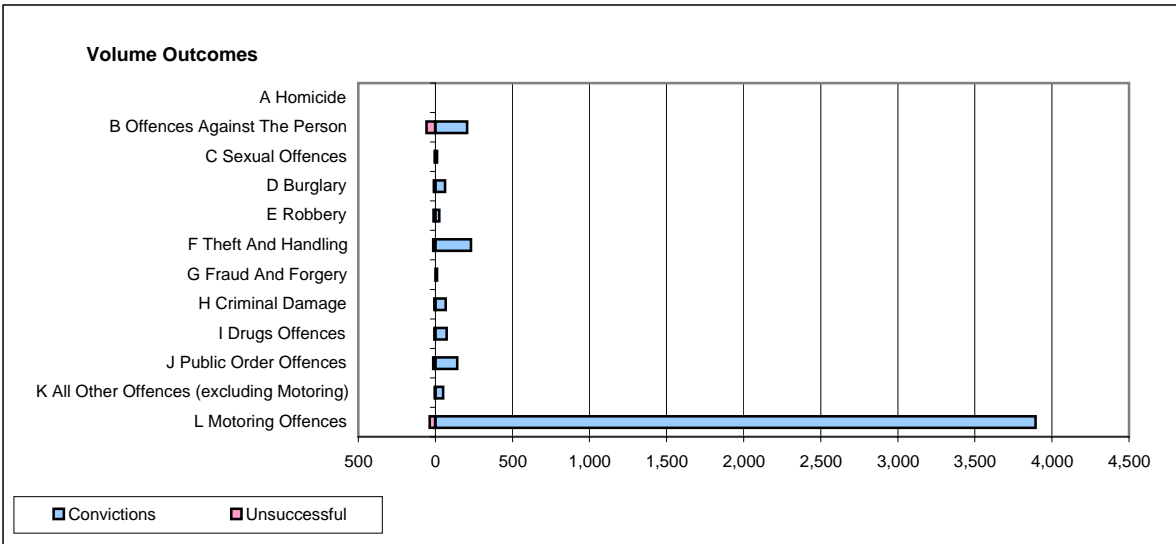
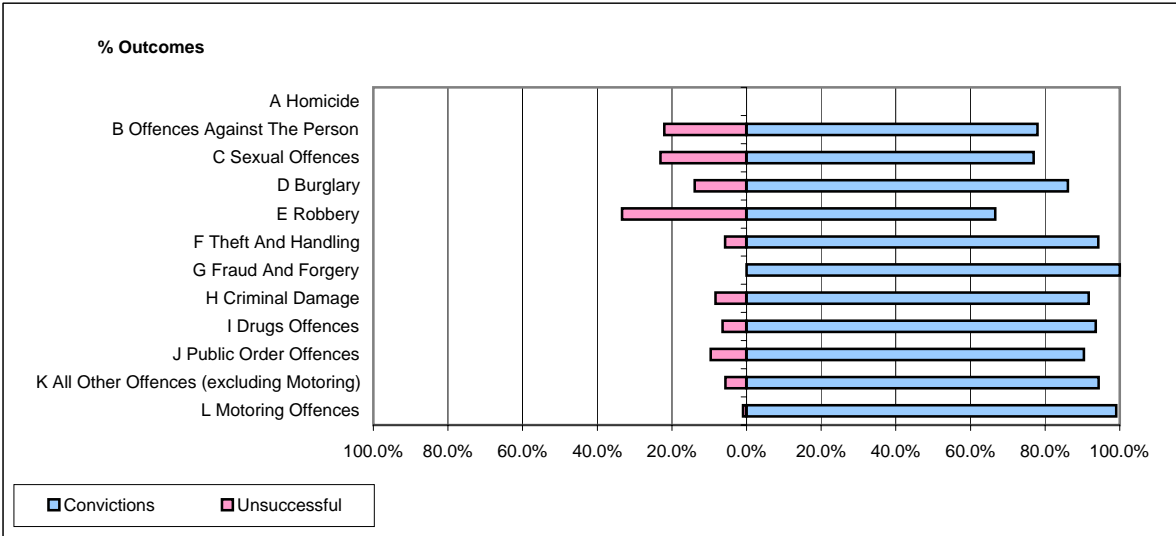


**CPS OUTCOMES BY PRINCIPAL OFFENCE CATEGORY**

**August 2008**

**P31-Nottinghamshire**



	Convictions		Unsuccessful	
	Number of Defendants	%	Number of Defendants	%
<b>A Homicide</b>	<b>0</b>	<b>0</b>	<b>0</b>	<b>0</b>
<b>B Offences Against The Person</b>	<b>205</b>	<b>77.9%</b>	<b>58</b>	<b>22.1%</b>
<b>C Sexual Offences</b>	<b>10</b>	<b>76.9%</b>	<b>3</b>	<b>23.1%</b>
<b>D Burglary</b>	<b>62</b>	<b>86.1%</b>	<b>10</b>	<b>13.9%</b>
<b>E Robbery</b>	<b>26</b>	<b>66.7%</b>	<b>13</b>	<b>33.3%</b>
<b>F Theft And Handling</b>	<b>231</b>	<b>94.3%</b>	<b>14</b>	<b>5.7%</b>
<b>G Fraud And Forgery</b>	<b>11</b>	<b>100.0%</b>	<b>0</b>	<b>0.0%</b>
<b>H Criminal Damage</b>	<b>66</b>	<b>91.7%</b>	<b>6</b>	<b>8.3%</b>
<b>I Drugs Offences</b>	<b>73</b>	<b>93.6%</b>	<b>5</b>	<b>6.4%</b>
<b>J Public Order Offences</b>	<b>141</b>	<b>90.4%</b>	<b>15</b>	<b>9.6%</b>
<b>K All Other Offences (excluding Motoring)</b>	<b>50</b>	<b>94.3%</b>	<b>3</b>	<b>5.7%</b>
<b>L Motoring Offences</b>	<b>3,894</b>	<b>99.1%</b>	<b>36</b>	<b>0.9%</b>
<b>Admin Finalisations</b>	<b>0</b>	<b>0.0%</b>	<b>17</b>	<b>100.0%</b>
<b>TOTAL</b>	<b>4,769</b>	<b>96.4%</b>	<b>180</b>	<b>3.6%</b>