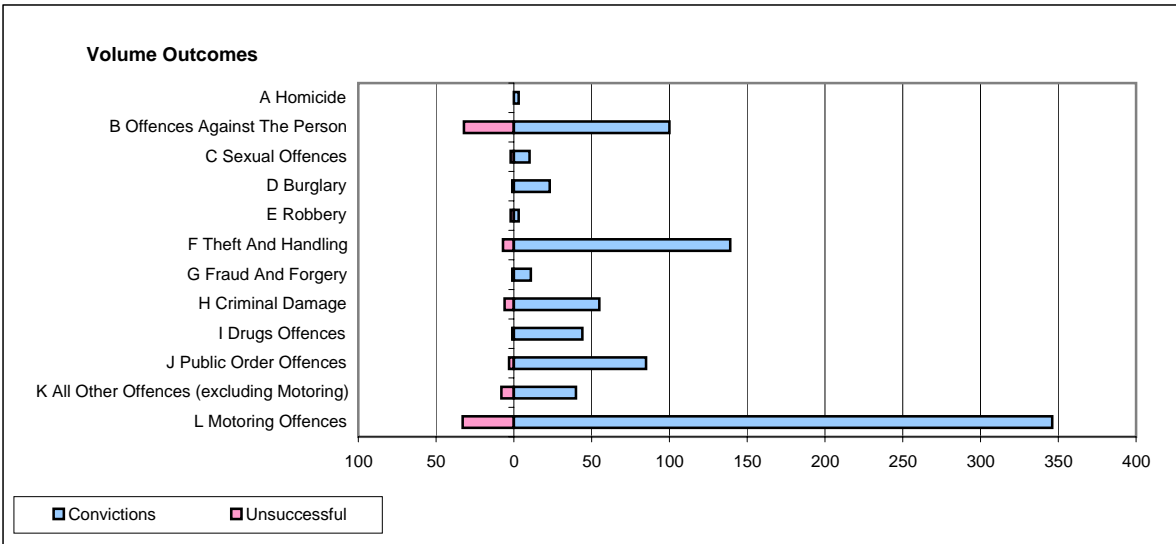
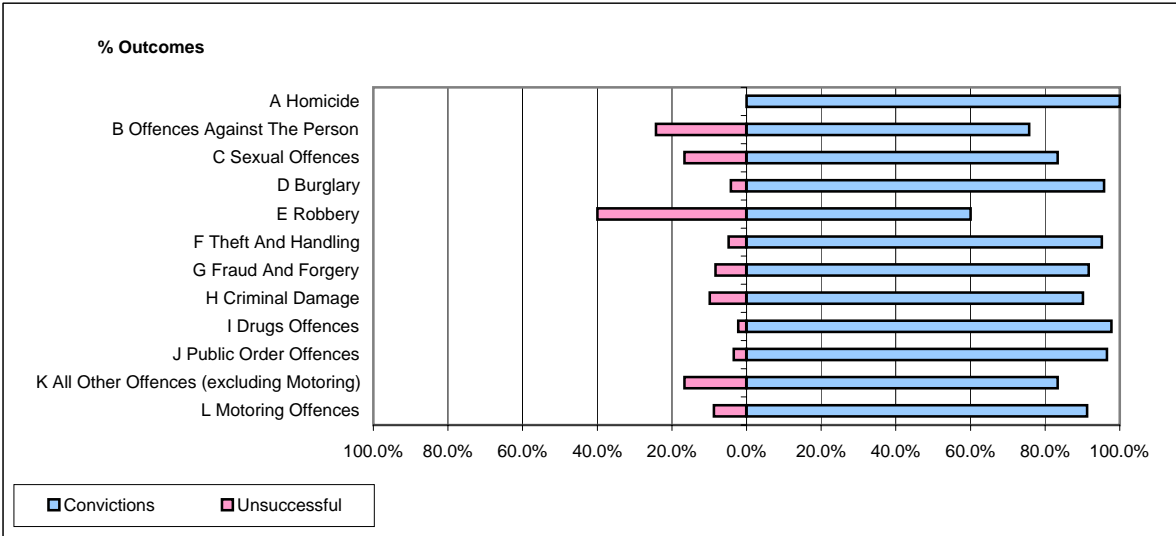


CPS OUTCOMES BY PRINCIPAL OFFENCE CATEGORY

August 2008

P26-Norfolk



	Convictions		Unsuccessful	
	Number of Defendants	%	Number of Defendants	%
A Homicide	3	100.0%	0	0.0%
B Offences Against The Person	100	75.8%	32	24.2%
C Sexual Offences	10	83.3%	2	16.7%
D Burglary	23	95.8%	1	4.2%
E Robbery	3	60.0%	2	40.0%
F Theft And Handling	139	95.2%	7	4.8%
G Fraud And Forgery	11	91.7%	1	8.3%
H Criminal Damage	55	90.2%	6	9.8%
I Drugs Offences	44	97.8%	1	2.2%
J Public Order Offences	85	96.6%	3	3.4%
K All Other Offences (excluding Motoring)	40	83.3%	8	16.7%
L Motoring Offences	346	91.3%	33	8.7%
Admin Finalisations	0	0.0%	15	100.0%
TOTAL	859	88.6%	111	11.4%