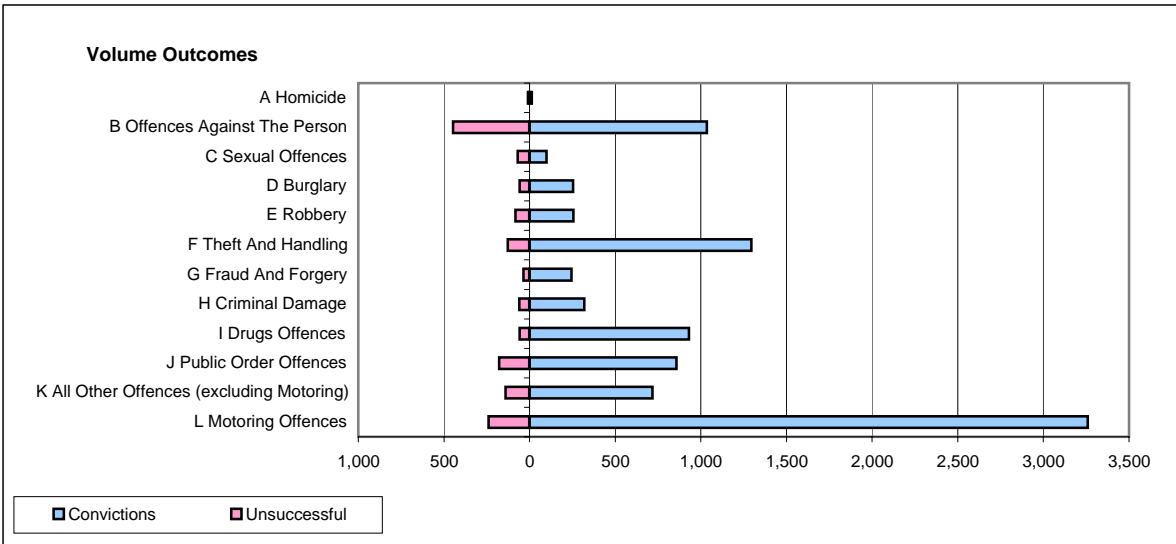
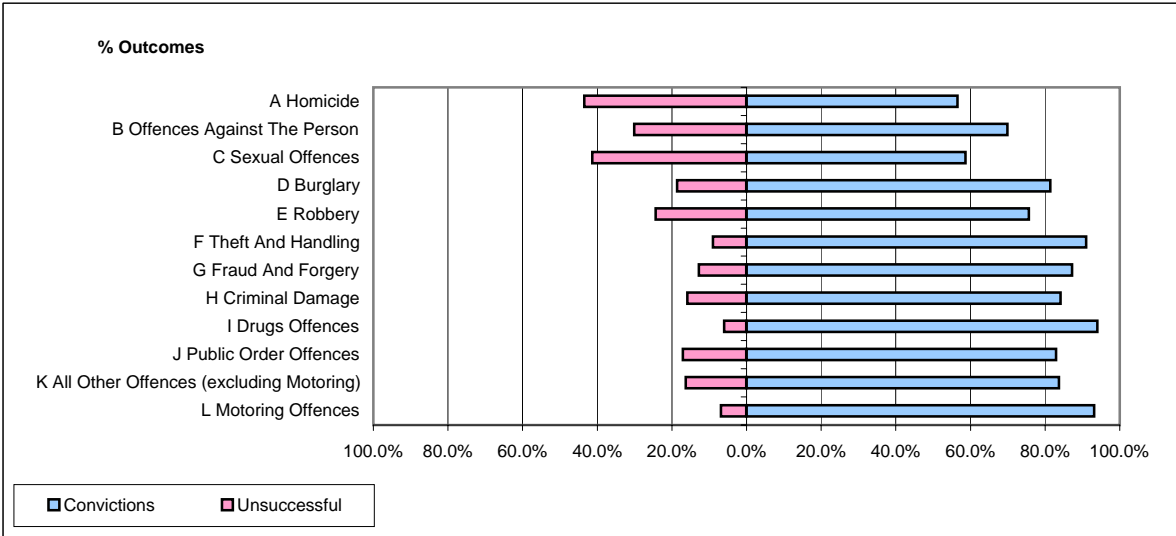


CPS OUTCOMES BY PRINCIPAL OFFENCE CATEGORY

August 2008

P25-Metropolitan&City



	Convictions		Unsuccessful	
	Number of Defendants	%	Number of Defendants	%
A Homicide	13	56.5%	10	43.5%
B Offences Against The Person	1,036	69.9%	446	30.1%
C Sexual Offences	98	58.7%	69	41.3%
D Burglary	254	81.4%	58	18.6%
E Robbery	255	75.7%	82	24.3%
F Theft And Handling	1,294	91.0%	128	9.0%
G Fraud And Forgery	245	87.2%	36	12.8%
H Criminal Damage	319	84.2%	60	15.8%
I Drugs Offences	930	94.0%	59	6.0%
J Public Order Offences	858	82.9%	177	17.1%
K All Other Offences (excluding Motoring)	718	83.7%	140	16.3%
L Motoring Offences	3,259	93.2%	239	6.8%
Admin Finalisations	0	0.0%	310	100.0%
TOTAL	9,279	83.6%	1,814	16.4%