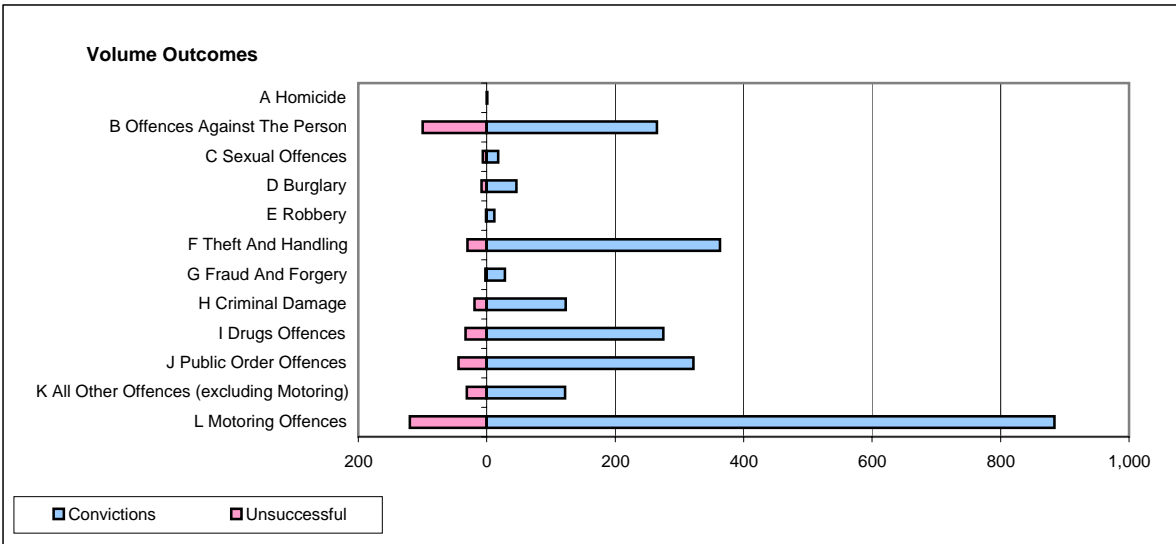
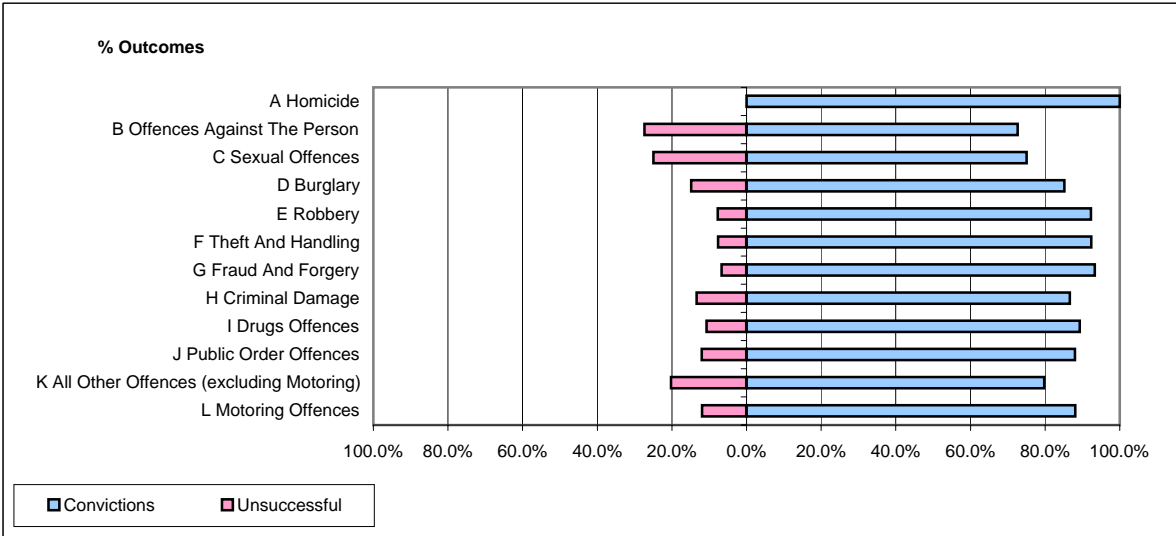


CPS OUTCOMES BY PRINCIPAL OFFENCE CATEGORY

August 2008

P24-Merseyside



	Convictions		Unsuccessful	
	Number of Defendants	%	Number of Defendants	%
A Homicide	1	100.0%	0	0.0%
B Offences Against The Person	265	72.6%	100	27.4%
C Sexual Offences	18	75.0%	6	25.0%
D Burglary	46	85.2%	8	14.8%
E Robbery	12	92.3%	1	7.7%
F Theft And Handling	363	92.4%	30	7.6%
G Fraud And Forgery	28	93.3%	2	6.7%
H Criminal Damage	123	86.6%	19	13.4%
I Drugs Offences	275	89.3%	33	10.7%
J Public Order Offences	322	88.0%	44	12.0%
K All Other Offences (excluding Motoring)	122	79.7%	31	20.3%
L Motoring Offences	884	88.0%	120	12.0%
Admin Finalisations	0	0.0%	32	100.0%
TOTAL	2,459	85.2%	426	14.8%