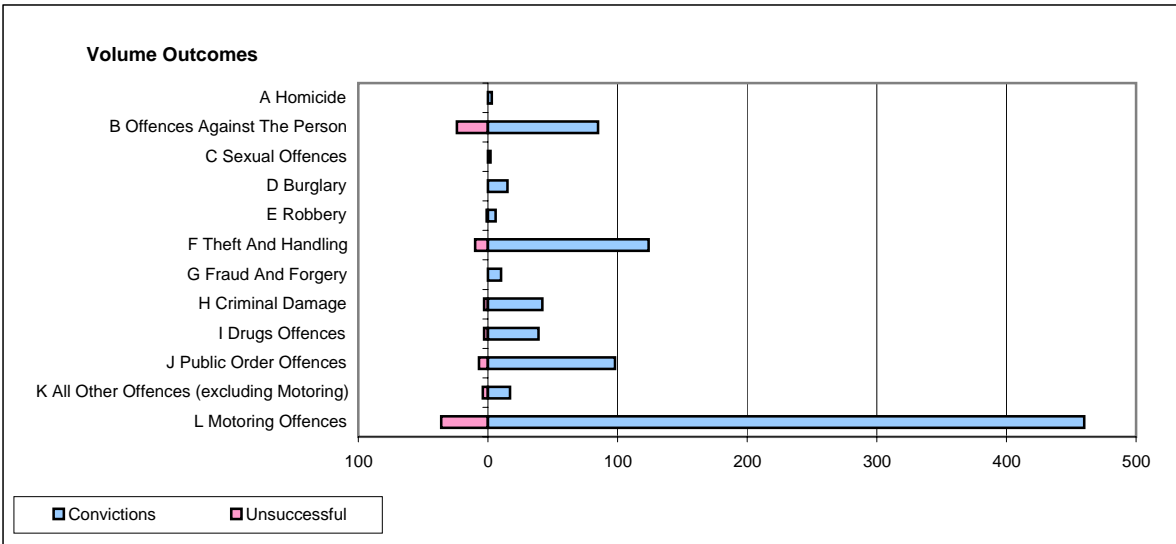
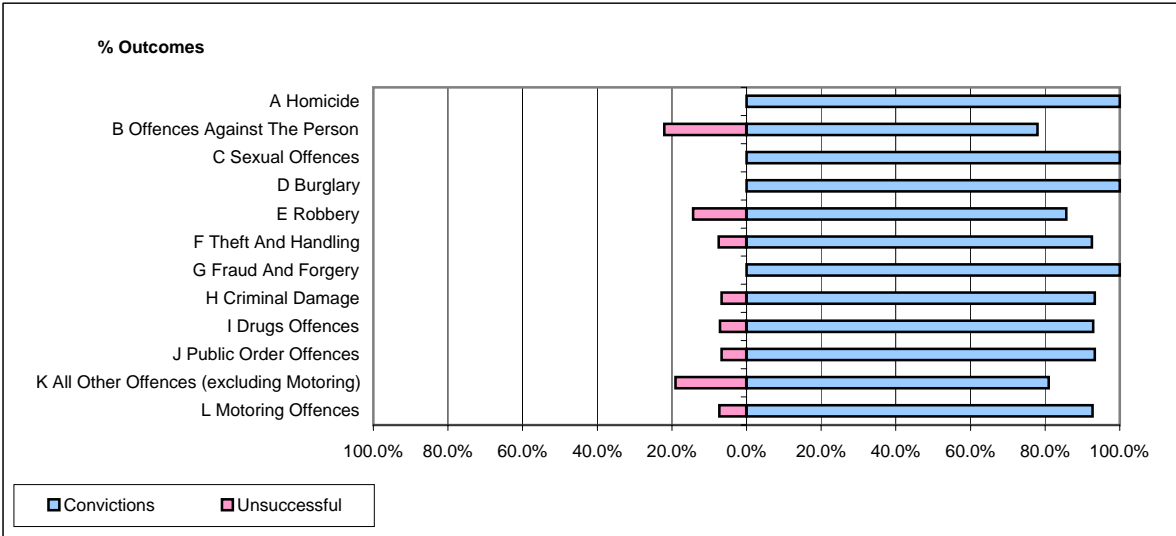


CPS OUTCOMES BY PRINCIPAL OFFENCE CATEGORY

August 2008

P23-Lincolnshire



	Convictions		Unsuccessful	
	Number of Defendants	%	Number of Defendants	%
A Homicide	3	100.0%	0	0.0%
B Offences Against The Person	85	78.0%	24	22.0%
C Sexual Offences	2	100.0%	0	0.0%
D Burglary	15	100.0%	0	0.0%
E Robbery	6	85.7%	1	14.3%
F Theft And Handling	124	92.5%	10	7.5%
G Fraud And Forgery	10	100.0%	0	0.0%
H Criminal Damage	42	93.3%	3	6.7%
I Drugs Offences	39	92.9%	3	7.1%
J Public Order Offences	98	93.3%	7	6.7%
K All Other Offences (excluding Motoring)	17	81.0%	4	19.0%
L Motoring Offences	460	92.7%	36	7.3%
Admin Finalisations	0	0.0%	13	100.0%
TOTAL	901	89.9%	101	10.1%