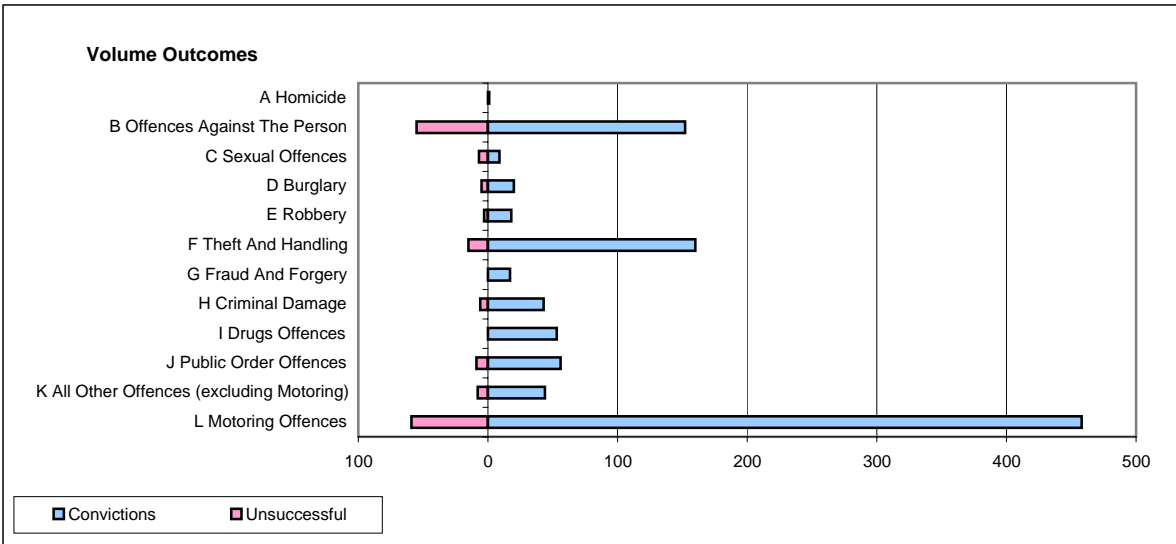
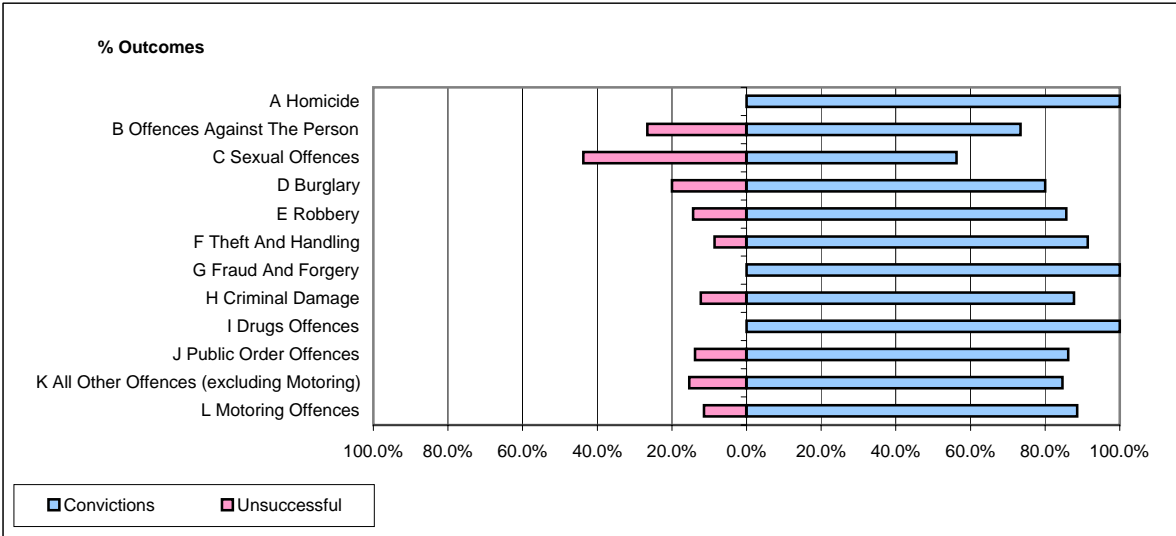


**CPS OUTCOMES BY PRINCIPAL OFFENCE CATEGORY**

**August 2008**

**P22-Leicestershire**



	Convictions		Unsuccessful	
	Number of Defendants	%	Number of Defendants	%
<b>A Homicide</b>	<b>1</b>	<b>100.0%</b>	<b>0</b>	<b>0.0%</b>
<b>B Offences Against The Person</b>	<b>152</b>	<b>73.4%</b>	<b>55</b>	<b>26.6%</b>
<b>C Sexual Offences</b>	<b>9</b>	<b>56.3%</b>	<b>7</b>	<b>43.8%</b>
<b>D Burglary</b>	<b>20</b>	<b>80.0%</b>	<b>5</b>	<b>20.0%</b>
<b>E Robbery</b>	<b>18</b>	<b>85.7%</b>	<b>3</b>	<b>14.3%</b>
<b>F Theft And Handling</b>	<b>160</b>	<b>91.4%</b>	<b>15</b>	<b>8.6%</b>
<b>G Fraud And Forgery</b>	<b>17</b>	<b>100.0%</b>	<b>0</b>	<b>0.0%</b>
<b>H Criminal Damage</b>	<b>43</b>	<b>87.8%</b>	<b>6</b>	<b>12.2%</b>
<b>I Drugs Offences</b>	<b>53</b>	<b>100.0%</b>	<b>0</b>	<b>0.0%</b>
<b>J Public Order Offences</b>	<b>56</b>	<b>86.2%</b>	<b>9</b>	<b>13.8%</b>
<b>K All Other Offences (excluding Motoring)</b>	<b>44</b>	<b>84.6%</b>	<b>8</b>	<b>15.4%</b>
<b>L Motoring Offences</b>	<b>458</b>	<b>88.6%</b>	<b>59</b>	<b>11.4%</b>
<b>Admin Finalisations</b>	<b>0</b>	<b>0.0%</b>	<b>23</b>	<b>100.0%</b>
<b>TOTAL</b>	<b>1,031</b>	<b>84.4%</b>	<b>190</b>	<b>15.6%</b>