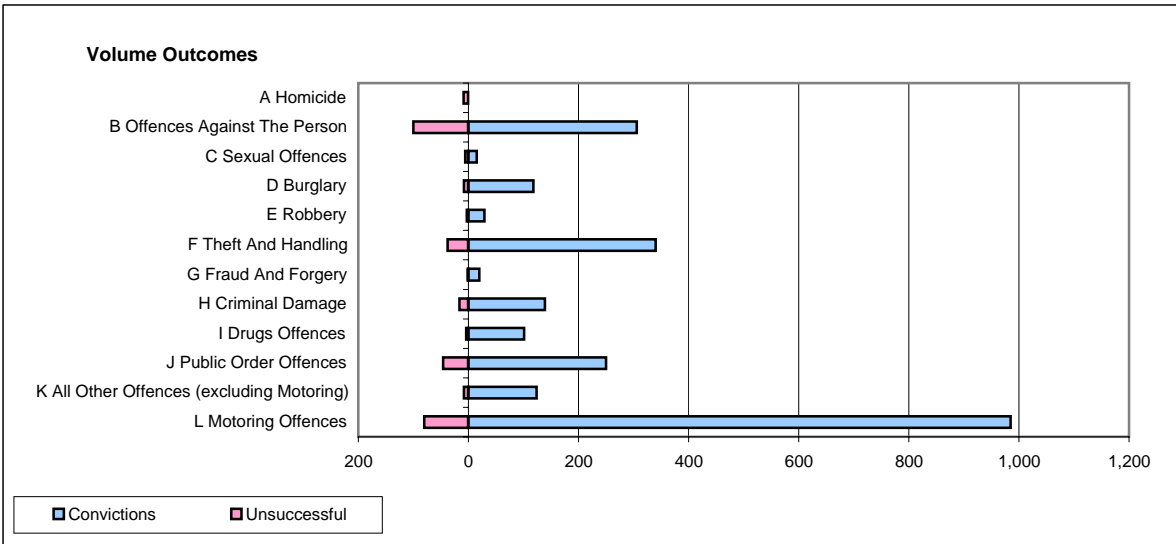
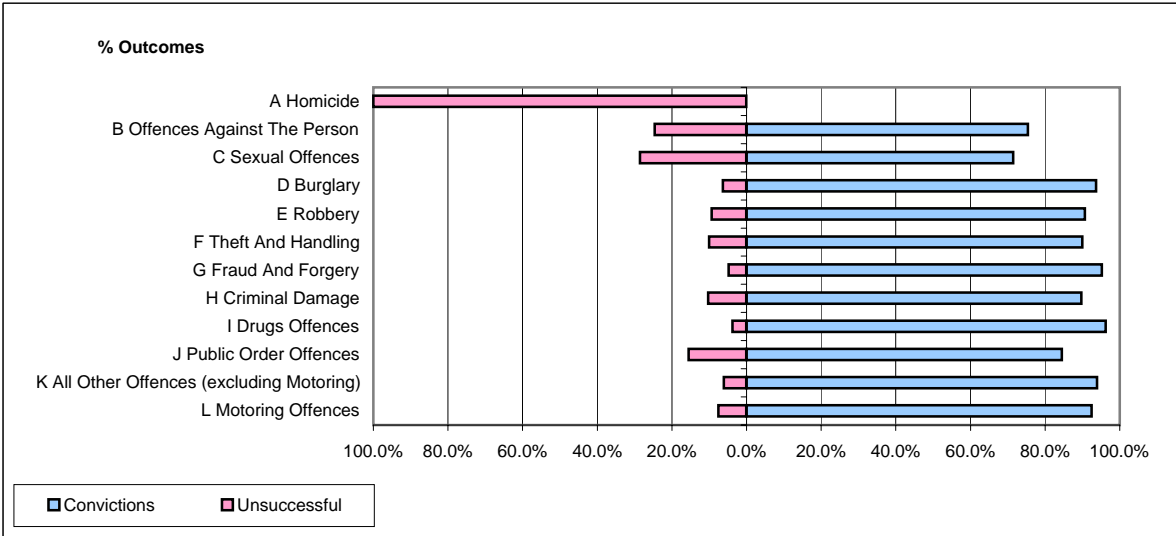


**CPS OUTCOMES BY PRINCIPAL OFFENCE CATEGORY**

**August 2008**

**P21-Lancashire**



	Convictions		Unsuccessful	
	Number of Defendants	%	Number of Defendants	%
<b>A Homicide</b>	<b>0</b>	<b>0.0%</b>	<b>9</b>	<b>100.0%</b>
<b>B Offences Against The Person</b>	<b>306</b>	<b>75.4%</b>	<b>100</b>	<b>24.6%</b>
<b>C Sexual Offences</b>	<b>15</b>	<b>71.4%</b>	<b>6</b>	<b>28.6%</b>
<b>D Burglary</b>	<b>118</b>	<b>93.7%</b>	<b>8</b>	<b>6.3%</b>
<b>E Robbery</b>	<b>29</b>	<b>90.6%</b>	<b>3</b>	<b>9.4%</b>
<b>F Theft And Handling</b>	<b>340</b>	<b>89.9%</b>	<b>38</b>	<b>10.1%</b>
<b>G Fraud And Forgery</b>	<b>20</b>	<b>95.2%</b>	<b>1</b>	<b>4.8%</b>
<b>H Criminal Damage</b>	<b>139</b>	<b>89.7%</b>	<b>16</b>	<b>10.3%</b>
<b>I Drugs Offences</b>	<b>101</b>	<b>96.2%</b>	<b>4</b>	<b>3.8%</b>
<b>J Public Order Offences</b>	<b>250</b>	<b>84.5%</b>	<b>46</b>	<b>15.5%</b>
<b>K All Other Offences (excluding Motoring)</b>	<b>124</b>	<b>93.9%</b>	<b>8</b>	<b>6.1%</b>
<b>L Motoring Offences</b>	<b>985</b>	<b>92.5%</b>	<b>80</b>	<b>7.5%</b>
<b>Admin Finalisations</b>	<b>0</b>	<b>0.0%</b>	<b>41</b>	<b>100.0%</b>
<b>TOTAL</b>	<b>2,427</b>	<b>87.1%</b>	<b>360</b>	<b>12.9%</b>