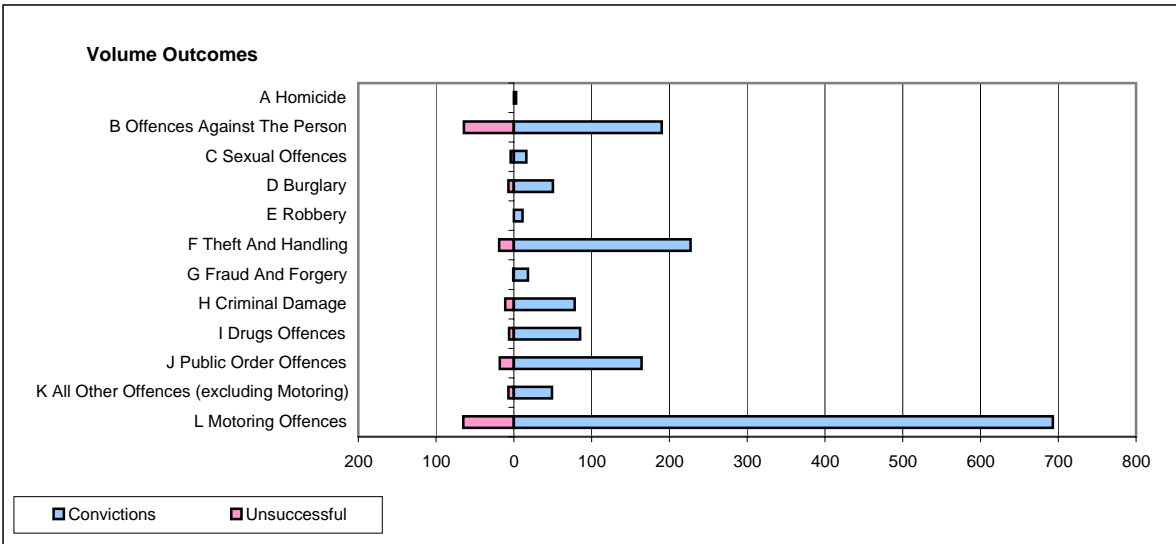
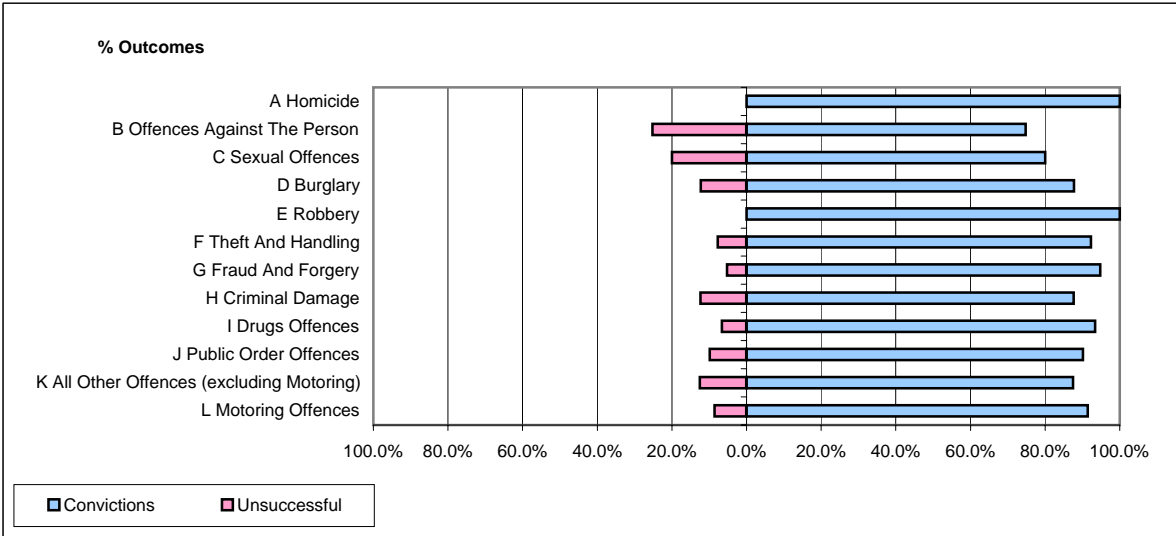


CPS OUTCOMES BY PRINCIPAL OFFENCE CATEGORY

August 2008

P20-Kent



	Convictions		Unsuccessful	
	Number of Defendants	%	Number of Defendants	%
A Homicide	3	100.0%	0	0.0%
B Offences Against The Person	190	74.8%	64	25.2%
C Sexual Offences	16	80.0%	4	20.0%
D Burglary	50	87.7%	7	12.3%
E Robbery	11	100.0%	0	0.0%
F Theft And Handling	227	92.3%	19	7.7%
G Fraud And Forgery	18	94.7%	1	5.3%
H Criminal Damage	78	87.6%	11	12.4%
I Drugs Offences	85	93.4%	6	6.6%
J Public Order Offences	164	90.1%	18	9.9%
K All Other Offences (excluding Motoring)	49	87.5%	7	12.5%
L Motoring Offences	693	91.4%	65	8.6%
Admin Finalisations	0	0.0%	19	100.0%
TOTAL	1,584	87.8%	221	12.2%