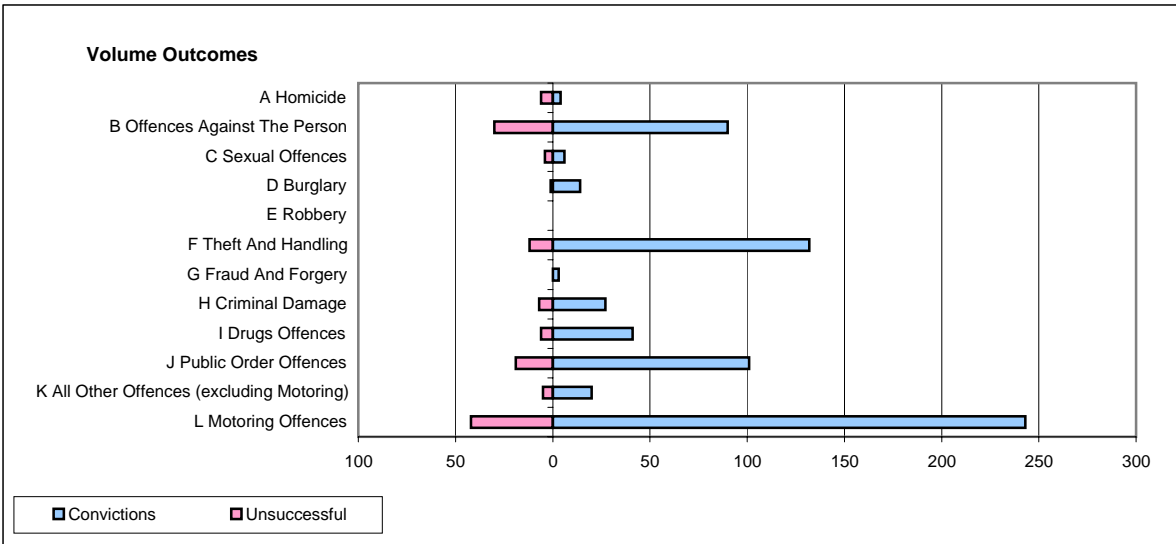
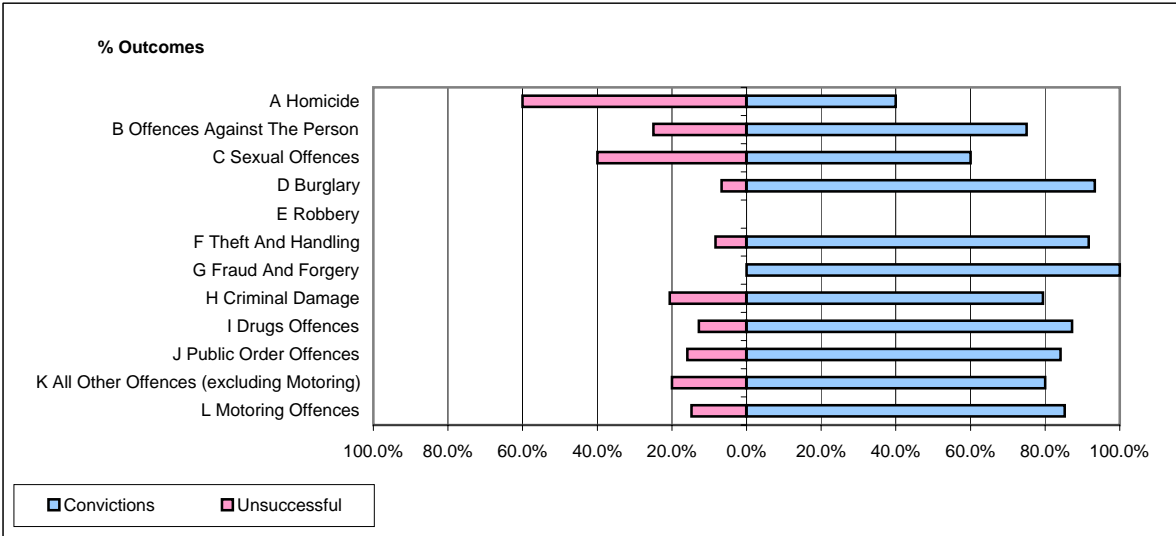


CPS OUTCOMES BY PRINCIPAL OFFENCE CATEGORY

August 2008

P16-Gwent



	Convictions		Unsuccessful	
	Number of Defendants	%	Number of Defendants	%
A Homicide	4	40.0%	6	60.0%
B Offences Against The Person	90	75.0%	30	25.0%
C Sexual Offences	6	60.0%	4	40.0%
D Burglary	14	93.3%	1	6.7%
E Robbery	0	0	0	0
F Theft And Handling	132	91.7%	12	8.3%
G Fraud And Forgery	3	100.0%	0	0.0%
H Criminal Damage	27	79.4%	7	20.6%
I Drugs Offences	41	87.2%	6	12.8%
J Public Order Offences	101	84.2%	19	15.8%
K All Other Offences (excluding Motoring)	20	80.0%	5	20.0%
L Motoring Offences	243	85.3%	42	14.7%
Admin Finalisations	0	0.0%	6	100.0%
TOTAL	681	83.2%	138	16.8%