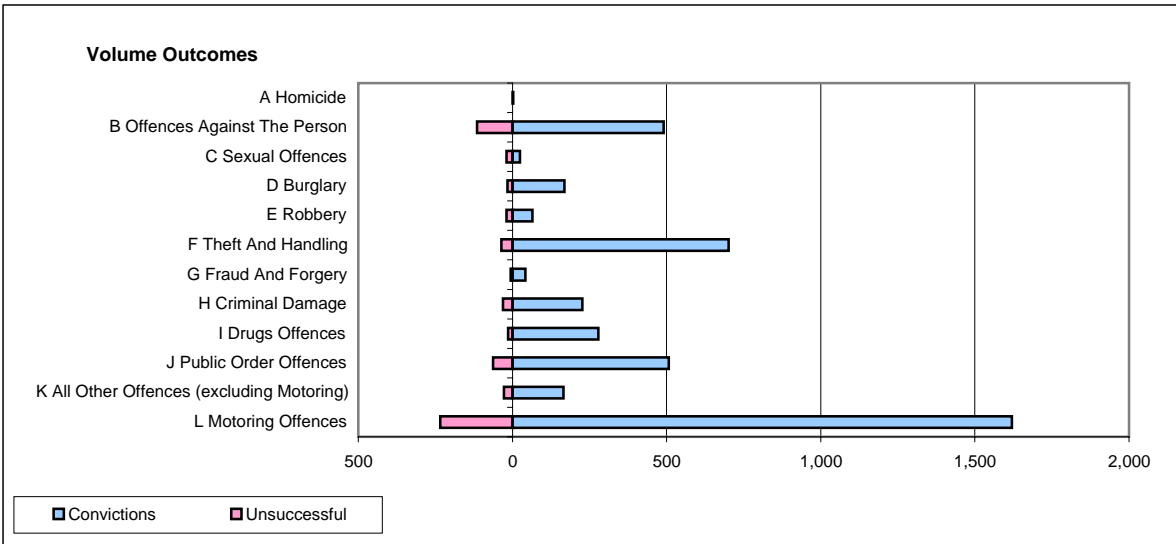
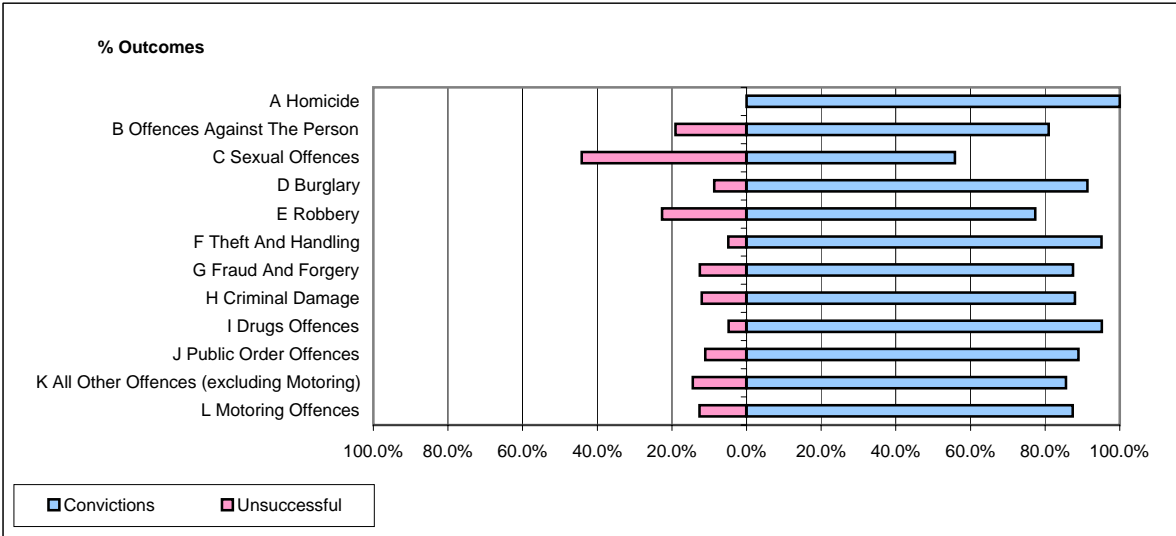


CPS OUTCOMES BY PRINCIPAL OFFENCE CATEGORY

August 2008

P15-GreaterManchester



	Convictions		Unsuccessful	
	Number of Defendants	%	Number of Defendants	%
A Homicide	2	100.0%	0	0.0%
B Offences Against The Person	490	81.0%	115	19.0%
C Sexual Offences	24	55.8%	19	44.2%
D Burglary	169	91.4%	16	8.6%
E Robbery	65	77.4%	19	22.6%
F Theft And Handling	701	95.1%	36	4.9%
G Fraud And Forgery	42	87.5%	6	12.5%
H Criminal Damage	227	88.0%	31	12.0%
I Drugs Offences	279	95.2%	14	4.8%
J Public Order Offences	507	88.9%	63	11.1%
K All Other Offences (excluding Motoring)	166	85.6%	28	14.4%
L Motoring Offences	1,620	87.4%	234	12.6%
Admin Finalisations	0	0.0%	78	100.0%
TOTAL	4,292	86.7%	659	13.3%